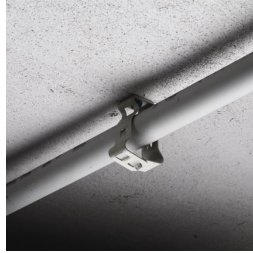
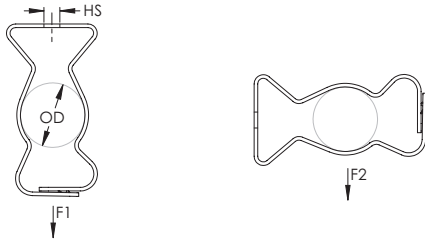


# Snap Close Conduit/Pipe Clamp – 20M4I



- May be used for either vertical or horizontal installations
- Eliminates need for offset bending conduit
- Finger closure, no tools required



Part Number	20M4I
Material	Spring Steel
Finish	CADDY® ARMOUR
EMT Conduit Size	1 1/4"
Rigid Conduit/Pipe Size	1 1/4"
Hole Size (HS)	1/4"
Hole Type	Threaded
Static Load 1 (F1)	100 lb
Static Load 2 (F2)	25 lb
Certifications	cULus
Standard Packaging Quantity	100 pc
UPC	78285670320

UL, UR, cUL, cUR, cULus and cURus are registered certification marks of UL LLC.

#### WARNING

ERICO products shall be installed and used only as indicated in ERICO's product instruction sheets and training materials. Instruction sheets are available at [www.erico.com](http://www.erico.com) and from your ERICO customer service representative. Improper installation, misuse, misapplication or other failure to completely follow ERICO's instructions and warnings may cause product malfunction, property damage, serious bodily injury and death.

Copyright © 2015 ERICO International Corporation. All rights reserved.

CADDY, CADWELD, CRITEC, ERICO, ERIFLEX, ERITECH, and LENTON are registered trademarks of ERICO International Corporation.

