



Double Ended Linear

Double Ended Linear BC500T3Q/CL/2CD/TP

High-quality white light with superior lumen performance Halogen Double Ended lamps provide bright, white light for work lights and security lighting. Rugged construction for busy work sites. Offered in several lengths to meet most application needs. High lumen output provides light where you need it.

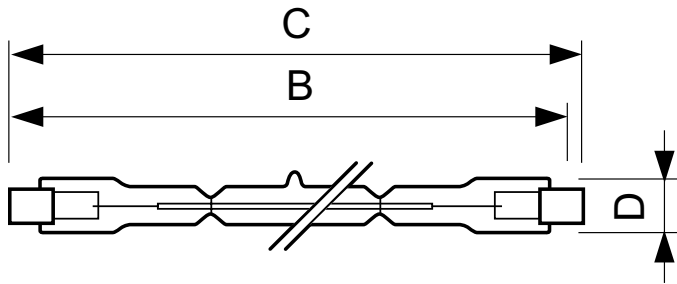
Product data

General Information	
Cap-Base	R7S [R7s]
Operating Position	UNIVERSAL [Any or Universal (U)]
Nominal Lifetime (Nom)	2000 h
Light Technical	
Luminous Flux (Nom)	9500 lm
Correlated Color Temperature (Nom)	2900 K
Luminous Efficacy (Rated) (Nom)	19.0 lm/W
Color Rendering Index (Nom)	100
Operating and Electrical	
Power (Rated) (Nom)	500 W
Lamp Current (Nom)	4.17 A
Starting Time (Nom)	0.0 s
Voltage (Nom)	120 V
Controls and Dimming	
Dimmable	Yes

Mechanical and Housing	
Bulb Finish	Clear
Approval and Application	
Energy Efficiency Label (EEL)	D
Luminaire Design Requirements	
Bulb Temperature (Max)	900 °C
Pinch Temperature (Max)	350 °C
Product Data	
Order product name	Double Ended Linear BC500T3Q/CL/2CD/TP
EAN/UPC - Product	50067805011841
Order code	924735334596
Numerator - Quantity Per Pack	1
Numerator - Packs per outer box	12
Material Nr. (12NC)	924735334596
Net Weight (Piece)	0.005 kg

Double Ended Linear

Dimensional drawing



Product	D (max)	B (max)	B	B (min)	C (max)
Double Ended Linear	12 mm	115.8 mm	114.2 mm	112.6 mm	117.6 mm
BC500T3Q/CL/2CD/TP					

DESmall 500W R7s 120V

