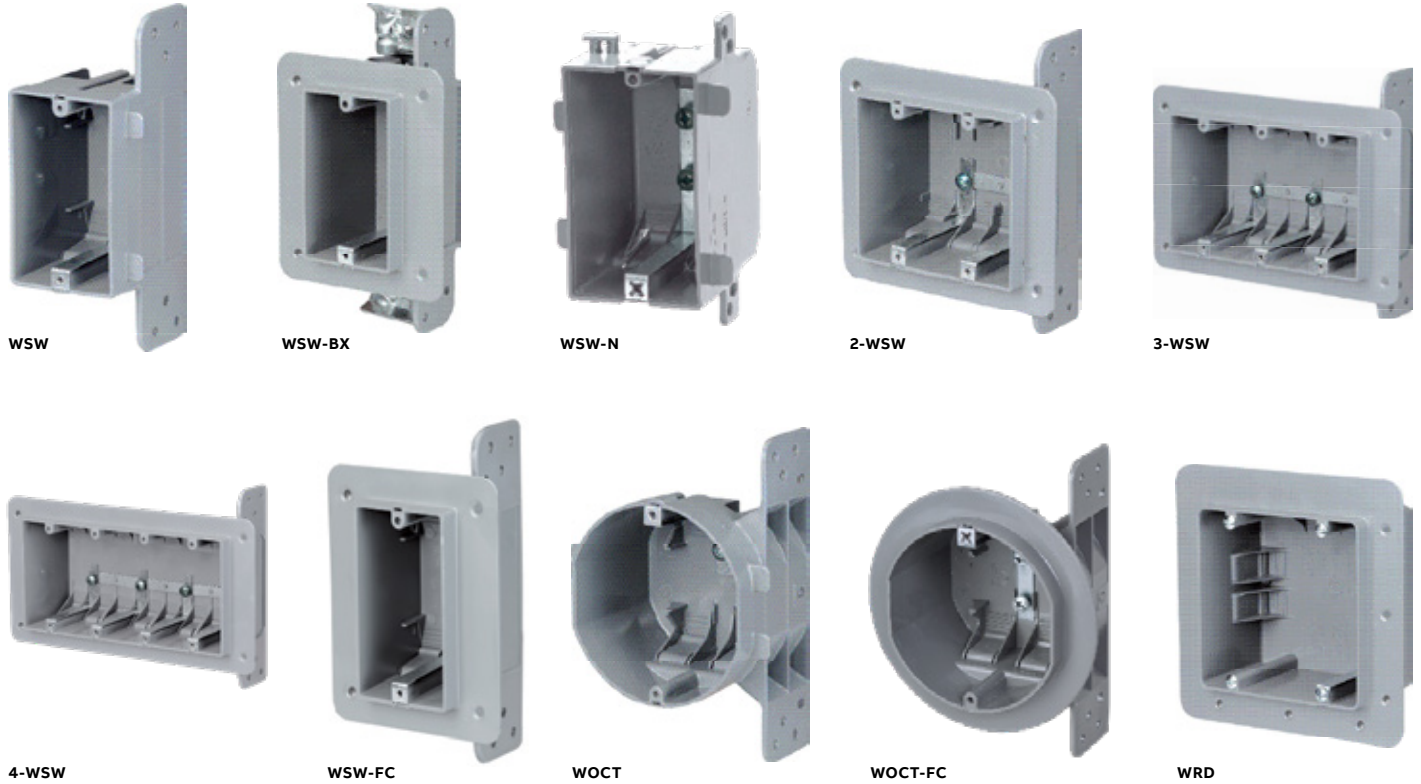


## NuTek® Nonmetallic boxes



Cat. No.	Volume (Cu. in.)	Width (in.)	Edge Height (in.)	Edge Width (in.)	Cable Entries	Use with
<b>2<sup>3</sup>/<sub>4</sub> in. deep - 3-<sup>3</sup>/<sub>4</sub> in. high – device boxes</b>						
WSW	18.0	2 <sup>1</sup> / <sub>4</sub>	–	–	4	Nonmetallic sheathed cable
WSW-BX	18.0	2 <sup>1</sup> / <sub>4</sub>	5	4 <sup>1</sup> / <sub>4</sub>	4	AC90-Armoured cable
WSW-N	18.0	2 <sup>1</sup> / <sub>4</sub>	–	–	4	Nonmetallic sheathed cable
2-WSW	33.0	4	5	5 <sup>1</sup> / <sub>2</sub>	8	Nonmetallic sheathed cable
3-WSW	48.0	5 <sup>3</sup> / <sub>4</sub>	5	7 <sup>1</sup> / <sub>2</sub>	12	Nonmetallic sheathed cable
4-WSW	67.0	7 <sup>5</sup> / <sub>8</sub>	5	8 <sup>3</sup> / <sub>4</sub>	16	Nonmetallic sheathed cable
WSW-FC	18.0	2 <sup>1</sup> / <sub>4</sub>	–	–	4	Nonmetallic sheathed cable
<b>2<sup>3</sup>/<sub>4</sub> in. deep - 3-<sup>3</sup>/<sub>4</sub> in. high – 4 in. wide – ceiling boxes</b>						
WOCT	26.0	–	–	–	4	Nonmetallic sheathed cable
WOCT-FC	26.0	–	5 <sup>1</sup> / <sub>4</sub>	–	4	Nonmetallic sheathed cable
<b>3 in. deep - 4-<sup>7</sup>/<sub>8</sub> in. high – 4-<sup>7</sup>/<sub>8</sub> in. wide – oven and dryer</b>						
WRD	61.0	–	6 <sup>7</sup> / <sub>8</sub>	6 <sup>7</sup> / <sub>8</sub>	4	Nonmetallic sheathed cable

## NuTek Nonmetallic boxes

Airtight model



F-WSW



FSWBX



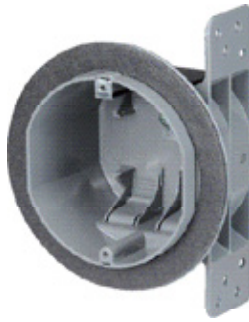
2-FSW



3-FSW



4-FSW



FWOCT



FWRD



WSW-P



Cat. No.	Volume (Cu. in.)	Width (in.)	Edge Height (in.)	Edge Width (in.)	Cable Entries	Use with
<b>2 3/4 in. deep - non-gangable - 3 3/4 in. high – device boxes</b>						
F-WSW	18.0	2 1/4	–	–	4	Nonmetallic sheathed cable
FSWBX	18.0	2 1/4	5	4 1/4	4	AC90-Armoured cable
2-FSW	33.0	4	5	5 1/2	8	Nonmetallic sheathed cable
3-FSW	48.0	5 3/4	5	7 1/2	12	Nonmetallic sheathed cable
4-FSW	67.0	7 5/8	5	8 3/4	16	Nonmetallic sheathed cable
<b>2 3/4 in. deep - 3 3/4 in. high – 4 in. wide – ceiling box</b>						
FWOCT	26.0	–	5 1/4	–	4	Nonmetallic sheathed cable
<b>3 in. deep - 4 7/8 in. high – 4-7/8 in. wide – oven and dryer</b>						
FWRD	61.0	–	6 7/8	6 7/8	4	Nonmetallic sheathed cable

Cat. No.	Description
<b>Partition</b>	
WSW-P	Voltage partition – for 4-WSW and 4-FSW only

**Note:** CEC 2012 rule 30-302: 4) Where the weight of a luminaire does not exceed 23 kg (50 lb), the luminaire shall be permitted to be supported by a ceiling outlet box attached directly to the building structure or by a ceiling outlet box attached to a bar hanger. Requires that a ceiling-mounted luminaire weighing 23 kg or less be supported on a ceiling outlet box attached directly to the building structure.

A bar hanger may also be used to attach a ceiling box to the building structure when the luminaire weighs 23 kg or less.

## NuTek Nonmetallic boxes

Fire resistance rating: 2 hours



WSW-US



F-WSW-US



2WSW-US



2-FWSW-US



WOCT-US



F-WOCT-US



Cat. No.	Volume (Cu. in.)	Width (in.)	Edge Height (in.)	Edge Width (in.)	Cable Entries	Use with
<b>2 3/4 in. deep - non-gangable - 3 3/4 in. high – device boxes</b>						
WSW-US	18.0	2 1/4	–	–	4	Nonmetallic sheathed cable
F-WSW-US	18.0	2 1/4	–	–	4	Nonmetallic sheathed cable
2WSW-US	33.0	4	5	5 1/2	8	Nonmetallic sheathed cable
2-FWSW-US	33.0	4	5	5 1/2	8	Nonmetallic sheathed cable
<b>2 3/4 in. deep - 3 3/4 in. high – 4 in. wide – ceiling boxes</b>						
WOCT-US	26.0	–	–	–	4	Nonmetallic sheathed cable
F-WOCT-US	26.0	–	–	–	4	Nonmetallic sheathed cable