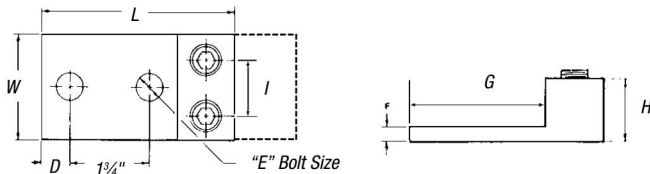


Dual-Rated Mechanical Connectors

Type ADR — ALCÜL™ Two-Conductor, Two-Hole Mount*



CAT. NO.	FIG.	CONDUCTOR RANGE (AL OR CU)		DIMENSIONS (IN.)							
		MAX.	MIN.	L	W	H	D	E	F	G	I
ADR35-22	1	350 kcmil	6 Str.	4 1/4	2 9/64	1 3/8	5/8	1/2	5/16	3	1 1/32
ADR60-22D	2	600 kcmil	2 Str.	5 5/16	2 3/4	1 1/2	5/8	1/2	3/8	3 1/16	1 7/16
ADR80-22D	2	800 kcmil	300 kcmil	6 3/16	3 1/2	1 7/8	5/8	1/2	9/16	3 1/16	1 13/16
ADR99-22D	2	1,000 kcmil	500 kcmil	6 3/16	3 1/2	1 7/8	5/8	1/2	9/16	3 1/16	1 13/16

* NEMA Spacing: 1 3/4" centers.

Connectors accommodating conductors 600 kcmil and larger have double row of set screws (D suffix).

UL 486B, AL9CU

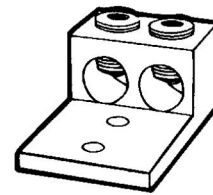


Fig. 1

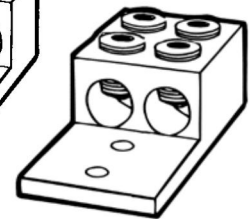


Fig. 2

Type ADR — ALCÜL™ Three-Conductor, Two-Hole Mount*

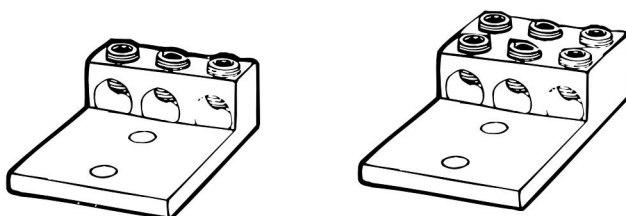


Fig. 1

Fig. 2



CAT. NO.	FIG.	CONDUCTOR RANGE (AL OR CU)		DIMENSIONS (IN.)							
		MAX.	MIN.	L	W	H	D	E	F	G	I
ADR02-32	1	2 Str.	14 AWG	2 3/16	1 5/8	3/8	1 1/32	5/16	3/16	1 1/16	9/16
ADR11-32	1	1/0 Str.	14 AWG	2 29/32	2	7/8	1 1/32	3/8	1/4	2 3/32	4 5/64
ADR31-32	1	3/0 Str.	6 Str.	4	2 13/16	1 3/8	5/8	1/2	5/16	3	3 1/32
ADR25-32	1	250 kcmil	6 Str.	4 3/16	2 13/16	1 1/4	5/8	1/2	1/4	3 1/16	3 1/32
ADR35-32	1	350 kcmil	6 Str.	4 3/16	3 3/16	1 1/4	5/8	1/2	1/4	3 1/16	1 1/32
ADR50-32	1	500 kcmil	4 Str.	4 1/16	3 3/4	1 1/8	5/8	1/2	7/16	3 3/16	1 1/4
ADR60-32D	2	600 kcmil	2 Str.	5 5/16	4 3/16	1 1/2	5/8	1/2	3/8	3 1/16	1 7/16
ADR80-32	2	800 kcmil	300 kcmil	6 3/16	4 1/2	1 1/8	5/8	1/2	9/16	3 1/16	1 9/16
ADR99-32	2	1,000 kcmil	500 kcmil	6 3/16	4 3/4	1 1/8	5/8	1/2	9/16	3 1/16	1 41/64

* NEMA Spacing: 1 3/4" centers except ADR02-32 (7/8" centers) and ADR11-32 (1" centers).

Connectors accommodating conductors 600 kcmil and larger have double row of set screws (D suffix).

UL 486B, AL9CU

