

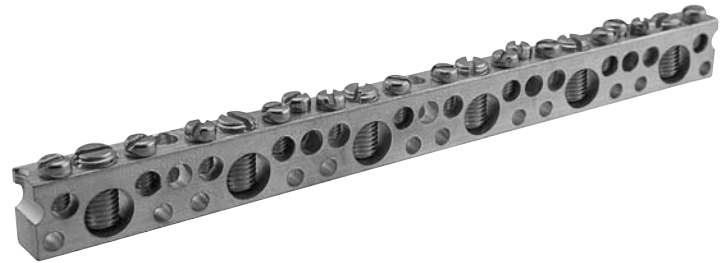
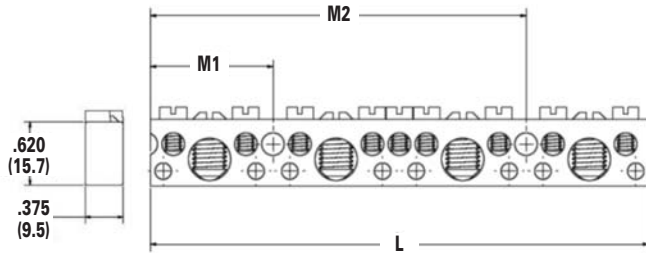
TYPE NBAE

Features

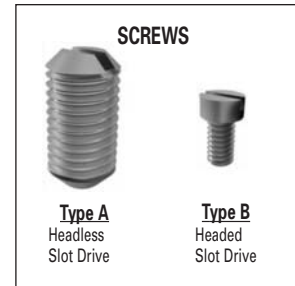
- Manufactured from high strength aluminum alloy
- Electro-tin plated
- Dual rated
- Assemblies available with 6-123 circuits
- UL Recognized for grounding and power, and CSA Certified

Benefits

- Provides maximum conductivity
- Low contact resistance
- Use with both copper and aluminum conductors
- Application versatility
- Ensures reliability



Catalog Number	Number of Large Circuits ¹	Number of Small Circuits ²	Mounting Hole Locations ³ in. (mm)				Dimensions in. (mm)	
			M1		M2		L	
NBAE-0204-1	2	4	1.133	(28.8)	-	-	2.265	(57.5)
NBAE-0307-1	3	7	2.305	(58.5)	-	-	3.438	(87.3)
NBAE-0409-2	4	9	1.133	(28.8)	3.477	(88.3)	4.609	(117.1)
NBAE-0410-1	4	10	2.305	(58.5)	-	-	4.609	(117.1)
NBAE-0512-2	5	12	2.305	(58.5)	4.648	(118.1)	5.781	(146.8)
NBAE-0615-2	6	15	3.477	(88.3)	5.821	(147.9)	6.954	(176.6)
NBAE-0924-2	9	24	2.305	(58.5)	9.336	(237.1)	10.468	(265.9)
NBAE-1233-2	12	33	5.820	(147.8)	8.164	(207.4)	13.986	(355.2)
NBAE-3192-0	31	92	-	-	-	-	36.250	(920.8)



¹ Large Circuits have a conductor range of 1/0-14AWG

² Small Circuits have a conductor range of 6-14AWG

³ Mounting holes have a diameter of 0.203 in. (5.2mm)

Catalog Number	Configuration
NBAE-0204-1	★●★○★●★
NBAE-0307-1	★●★●★●★○★●★
NBAE-0409-2	★●★○★●★●★●★○★●★
NBAE-0410-1	★●★●★●★○★●★●★●★
NBAE-0512-2	★●★●★●★○★●★●★●★○★●★
NBAE-0615-2	★●★●★●★●★○★●★●★●★○★●★
NBAE-0924-2	★●★●★●★○★●★●★●★●★●★●★●★●★●★●★●★○★●★
NBAE-1233-2	★●★●★●★●★●★●★●★●★●★○★●★●★●★○★●★●★●★●★●★●★●★●★●★●★●★
NBAE-3192-0	★●★●★●.....★●★● x 28.....★●★●★

All wire sizes, unless noted otherwise, are American Wire Gauge (AWG)
Tested to UL 486A/B, UL File E6207 and CSA C22.2 No. 65-03
Tested to UL 467, UL File E6207

- ★ Hole for small circuit
- Hole for large circuit
- Hole for mounting screw

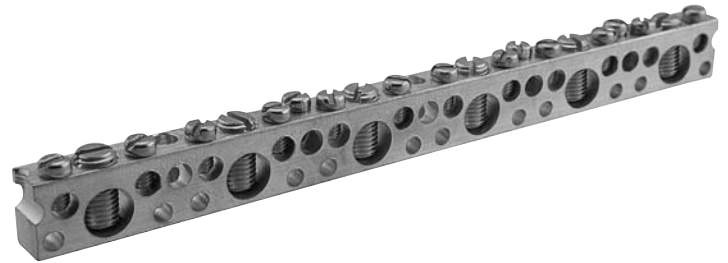
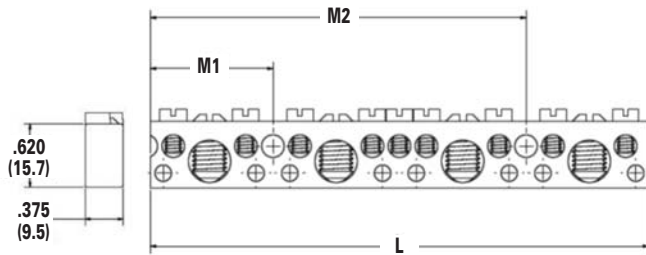
TYPE NBAE

Features

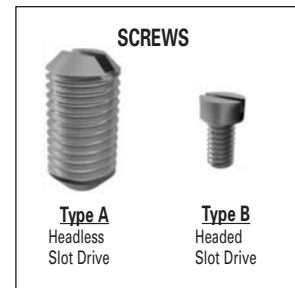
- Manufactured from high strength aluminum alloy
- Electro-tin plated
- Dual rated
- Assemblies available with 6-123 circuits
- UL Recognized for grounding and power, and CSA Certified

Benefits

- Provides maximum conductivity
- Low contact resistance
- Use with both copper and aluminum conductors
- Application versatility
- Ensures reliability



Catalog Number	Number of Large Circuits ¹	Number of Small Circuits ²	Mounting Hole Locations ³ in. (mm)				Dimensions in. (mm)	
			M1		M2		L	
NBAE-0204-1	2	4	1.133 (28.8)	-	-	2.265 (57.5)		
NBAE-0307-1	3	7	2.305 (58.5)	-	-	3.438 (87.3)		
NBAE-0409-2	4	9	1.133 (28.8)	3.477 (88.3)		4.609 (117.1)		
NBAE-0410-1	4	10	2.305 (58.5)	-	-	4.609 (117.1)		
NBAE-0512-2	5	12	2.305 (58.5)	4.648 (118.1)		5.781 (146.8)		
NBAE-0615-2	6	15	3.477 (88.3)	5.821 (147.9)		6.954 (176.6)		
NBAE-0924-2	9	24	2.305 (58.5)	9.336 (237.1)		10.468 (265.9)		
NBAE-1233-2	12	33	5.820 (147.8)	8.164 (207.4)		13.986 (355.2)		
NBAE-3192-0	31	92	-	-	-	36.250 (920.8)		



¹ Large Circuits have a conductor range of 1/0-14AWG

² Small Circuits have a conductor range of 6-14AWG

³ Mounting holes have a diameter of 0.203 in. (5.2mm)

Catalog Number	Configuration
NBAE-0204-1	★●★○★●★
NBAE-0307-1	★●★●★●★○★●★
NBAE-0409-2	★●★○★●★●★●★○★●★
NBAE-0410-1	★●★●★●★○★●★●★●★
NBAE-0512-2	★●★●★●★○★●★●★●★○★●★
NBAE-0615-2	★●★●★●★●★○★●★●★●★○★●★
NBAE-0924-2	★●★●★●★○★●★●★●★●★●★●★●★●★●★○★●★
NBAE-1233-2	★●★●★●★●★●★●★●★●★●★○★●★●★●★●★●★●★●★●★●★●★●★
NBAE-3192-0	★●★●★●.....★●★● x 28.....★●★●★

All wire sizes, unless noted otherwise, are American Wire Gauge (AWG)
Tested to UL 486A/B, UL File E6207 and CSA C22.2 No. 65-03
Tested to UL 467, UL File E6207

★ Hole for small circuit
● Hole for large circuit
○ Hole for mounting screw