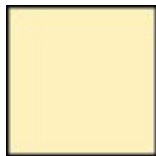


X7599-I



Color:



Ivory

UPC Code: 07847751359

Country of Origin: China

NEMA: 5-15R



GFCI Receptacles

Brand Features

Slim is in. New SmartlockPro Slim GFCIs Install Easily Industry-leading quality, professional grade lockout action, and the slimmest profile on the market make SmartlockPro Slim GFCIs the smartest choice in ground fault circuit interrupter protection. Faster and easier to install in any wallbox because depth is reduced, the slim GFCIs flush mount to the wall with minimal protrusion for a sleek, finished look. Enhanced features include external back wiring for positive indication the wire is properly seated, exceptional resistance to wire pullout and the ability to withstand high torque. Tamper-Resistant to meet current NEC Requirements for new or renovated residential construction.

Item Description

15 Amp, 125 Volt Receptacle, 20 Amp Feed-Through, Tamper-Resistant, SmartlockPro Slim GFCI, Monochromatic, back and side wired, nylon wallplate, screws and self grounding clip included - Ivory

Technical Information

AC Horsepower Ratings

At Rated Voltage: 1 HP

Electrical Specifications

Dielectric Voltage: Withstands 1250VAC per UL 943 and CSA-C22.2 No. 144.1-06

Short Circuit Current Rating: 10KA

Temperature Rise: Max 30C after 100 cycles OL at 150 percent rated current

Environmental Specifications

Flammability: Rated V-2 per UL94

Operating Temperature: -35C to +66C

Material Specifications

Face Material: Thermoplastic

Body Material: Polycarbonate

Line Contacts: Brass Double-Wipe .031 Thick

Terminal Screws: Plated Steel

Grounding Screw: Plated Steel

Yoke: Zinc-Plated Steel

Clamps: Brass

Notes: w/ Wallplate

Mechanical Specifications

Terminal ID: Brass-Hot, Green-Ground, Silver-Neutral

Terminal Accom.: 14-10 AWG

Product ID: Ratings are permanently marked on device

Product Features

Feature: Tamper-Resistant

Amperage: 15 Amp

Voltage: 125 Volt

NEMA: 5-15R

Pole: 2

Wire: 3

Standards and Certifications

NEMA: WD-6

ANSI: C-73

UL498: Yes

CSA C22.2 No. 42: Yes

NOM: 057

MIL-SPEC: A-A-55459-SB

UL 943: File E48380

CSA-C22.2 No. 144.1-06: File LR-57811

Fed Spec WC-596: Yes

Trip Level: Class A, 5mA plus or minus 1mA

Termination: Back & Side

Face Material: Thermoplastic

Body Material: Polycarbonate

Grounding: Self Grounding

Color: Ivory

Strap Material: Galvanized Steel

Standards and Certifications: UL/CSA

Fed Spec WC-596: Yes

Warranty: 2-Year Limited

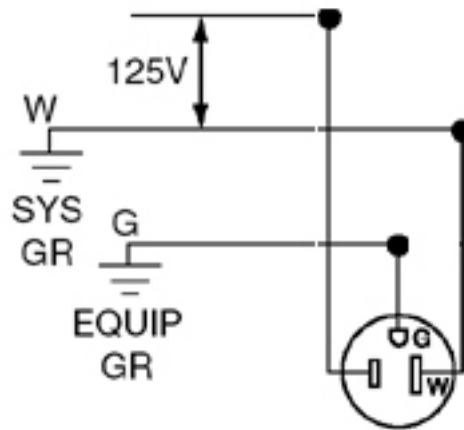
Notes: w/ Wallplate

Grade: Residential

Features and Benefits

- Reduced depth of SmartlockPro® Slim GFCI makes it easier to install in any electrical box, even shallow ones.
- Terminals allow for easy wiring options – back and side wire capable.
- External back wire clamps provide visual indication of proper wire seating.
- Withstands high torque and resists wire pullout.
- Standard brass self-grounding clip.
- Automatically test the GFCI every time the RESET button is pushed in. The GFCI will not reset if the GFCI circuit is not functioning properly.
- By blocking reset of the GFCI if protection has been compromised, SmartlockPro® Slim GFCI reduces the possibility of end-users incorrectly assuming that a reset GFCI outlet is providing ground fault protection when it actually is not.
- A line-load reversal diagnostic feature is provided which prevents the GFCI from being reset and stops power from being fed to the GFCI receptacle face or through to downstream devices. A green LED indicator on the GFCI's face also illuminates to alert the installer to the line-load wiring reversal.
- Trip threshold meets or exceeds UL requirements for tripping time.
- Improved immunity to high-frequency noise reduces nuisance tripping.
- Advanced electronics design provides superior resistance to electrical surges and over-voltages.
- Compatible with all Decora devices and wallplates; available in select Decora colors.
- UL Fed Spec WC-596 rated.

Wiring Diagram



5-15R

SPECIFICATION SUBMITTAL

JOB NAME: <input style="width: 90%;" type="text"/>	CATALOG NUMBERS: <input style="width: 60%;" type="text"/> <input style="width: 40%;" type="text"/>	
JOB NUMBER: <input style="width: 80%;" type="text"/>	<input style="width: 60%;" type="text"/> <input style="width: 40%;" type="text"/>	

Leviton Manufacturing Co., Inc.

201 North Service Road, Melville, NY 11747

Telephone: 1-800-323-8920 • FAX: 1-800-832-9538 • Tech Line (8:30AM-7:30PM E.S.T. Monday-Friday): 1-800-824-3005

Leviton Manufacturing of Canada, Ltd.

165 Hymus Boulevard, Pointe Claire, Quebec H9R 1E9 • Telephone: 1-800-469-7890 •

FAX: 1-800-824-3005 • www.leviton.com/canada

Leviton S. de R.L. de C.V.

Lago Tana 43, Mexico DF, Mexico CP 11290 • Tel.: (+52)55-5082-1040 • FAX: (+52)5386-1797 • www.leviton.com.mx

Visit our Website at: www.leviton.com

© 2012-2016 Leviton Manufacturing Co., Inc. All rights reserved. Subject to change without notice.

Leviton has a global presence.

If you would like to know where your local Leviton office is located please go to: www.leviton.com/international/contacts/

