

Open Rotary Disconnects

Product Overview

Rotary Disconnect Switch Selection Guide



**R5 Series
Non-Fusible 16–80A**



**R9 Series
Non-Fusible 30–100A Compact**



**R9 Series
Non-Fusible 100–1200A**

Description

Page V9-T1-48

Page V9-T1-50

Page V9-T1-52

Product Description

R5 Series (UL 508 listed) products are manually operated modular switches. Load break switching and isolation provide safety solutions for any low voltage circuit, particularly for machine and control circuits. The R5 Series products are manual motor controllers suitable as motor disconnect.

The R9 Series (UL 98 listed) non-fusible 30–100A compact range ensures making or breaking on load and safety isolation for low voltage electrical circuits, particularly for machine control circuits up to 600V.

The R9 Series (UL 98 listed) non-fusible 100–1200A are manually operated multipole load-break switches. Quick-make, quick-break design provides safety isolation for any low voltage circuit.

Approvals

UL 508 listed, Guide NLRV, File E165150
CSA C22.2 No. 14, File 217736
IEC 60947-3, EN 60947-3
CCC

UL 98, File E222859
CSA 22.2 No. 4, File 217736
IEC 60947-3
EN 60947-3

UL 98, File E222859
CSA 22.2 No. 4, File 217736
IEC 60947-3
EN 60947-3



**R9 Series
Fusible 30–800A**



**R9 Series
DC Rated Disconnects**



Manual Transfer Switches

Description

Page V9-T1-54

Page V9-T1-59

Page V9-T1-60

Product Description

R9 Series (UL 98 listed) Fusible 30–800A manual operated multi-pole fusible disconnect switches use double break contacts per pole that ensure complete isolation of the fuse when the switch is in the OFF position.

When installed with fuses, they provide protection for low voltage electrical installations against short circuit and overload.

UL listed disconnect switches 600 Vdc for photovoltaic applications 100 to 400A
R9 Series (UL 98 listed) DC rated disconnects are manually operated multi-pole load break switches. They provide safety isolation for any low voltage circuit in a photovoltaic application.

R9 Series (UL 98 listed) non-fusible disconnects are heavy-duty manual transfer switches, they transfer load manually between two low voltage circuits and provide safety disconnection.

These switches are extremely durable and are tested and approved for use in the most demanding applications as resistive load or total system applications.

Approvals

UL 98, File E222859 for 30 to 800A ratings
UL 489, File E305341 for H Frame switches
CSA 22.2 No. 4, File 217736
CSA 22.2 No. 5, File 217736, H Frame only
IEC 60947-1, EN 60947-1
IEC 60947-3, EN 60947-3
CE mark
NFPA® 79

UL 98, cULus®, File E222859
CSA 22.2 No. 4, File 217736 ①
IEC 60947-3
EN 60947-3
IEC 60-364-7-712 (Rules for the installations and sites special—photovoltaic applications)

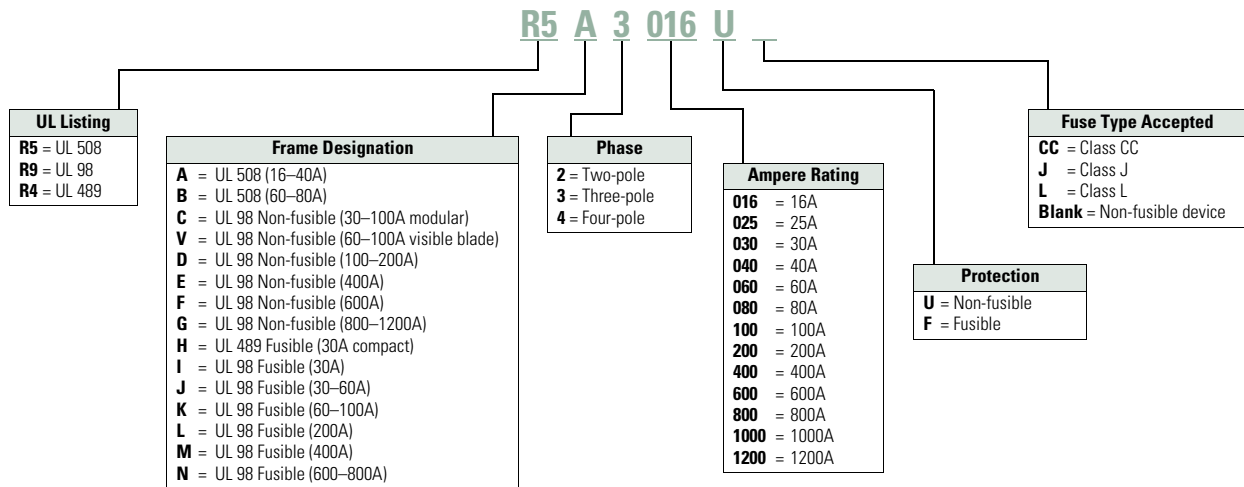
UL 98, cULus, File E222859
UL 1008 (2011)
CSA 22.2 No. 4, File 217736
IEC 60947-3
EN 60947-3

Note

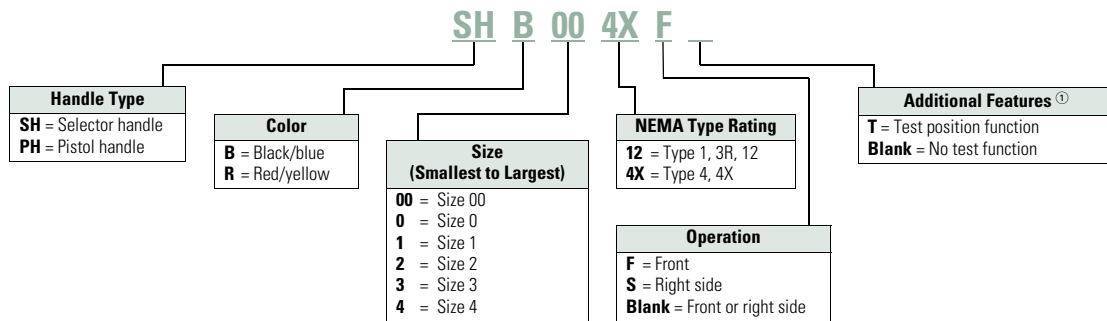
① Q4 2010

Catalog Number Selection

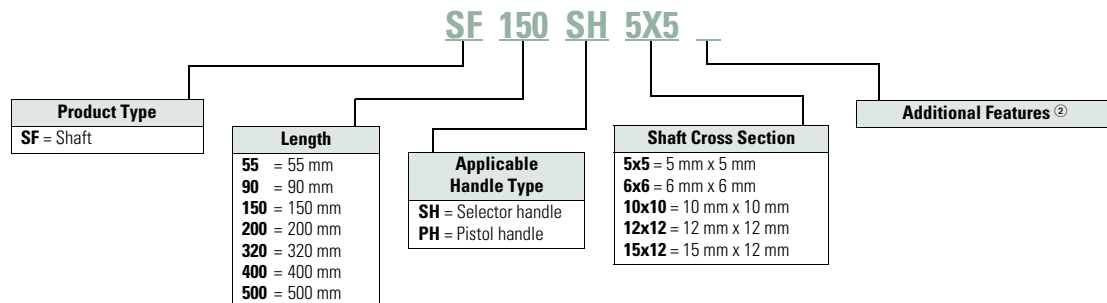
Disconnects



External Handles



Shafts



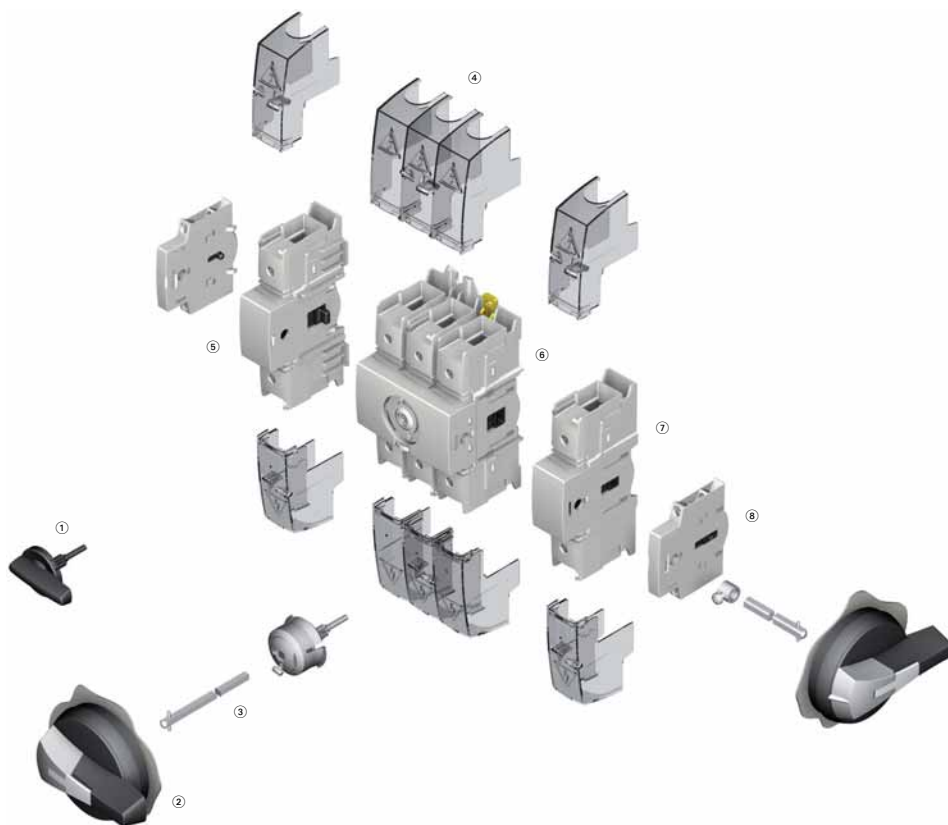
Notes

^① **HV** at the end of some catalog numbers indicates use with H and V switches only. Not all handles are designed to go with all disconnects. Consult specific section of the catalog for available options.

^② **H** at the end of some catalog numbers indicates use with H Frame switches only. Not all shafts are designed to go with all disconnects. Consult specific section of the catalog for available options.

Non-Fusible 30–100A Compact**Features**

- Rating three-pole from 30A to 100A
- Direct or external operation handle (padlockable in ON position)
- Double breaking per phase
- Small footprint

R9 Series Non-Fusible 30–100A Compact**Product Identification**

- ① Direct handle
- ② Door interlocked external handle
- ③ Shaft extension
- ④ Terminal shrouds
- ⑤ Unswitched neutral pole
- ⑥ Switch body
- ⑦ Switched fourth-pole module
- ⑧ Modular type auxiliary contacts

Note: For further details, please see the installation instructions supplied with each device.

Product Selection

Direct Operation



Switch body + Direct handle

External Operation



Switch body + Shaft + External handle

R9 Series 30–100A

| Ampere Rating (Frame) | Number of Poles | Switch Body Only | Direct Handle | Front and Right External Handle SH00 (Choose One) | Front and Right External Handle SH0 (Choose One) | Shaft for SH0 and SH00 Handles—In (mm) (Choose One) | Switched Fourth-Pole Module | Unswitched Neutral Module | Auxiliary Contacts (Choose One) | Terminal Shrouds (Choose One) |
|-----------------------|-----------------|------------------|---------------|---|--|---|-----------------------------|---------------------------|---------------------------------|-------------------------------|
| 30 (C Frame) | 3 | R9C3030U | DHR9 | SH00 Black 3R, 12 SHB00N12 | SH0 Black 3R, 12 SHB0N12 | 2.20 (55.5) SF55SH5X5 | S4PR930 | Neutral UNMR9C | 1NO + 1NC AC1N0NC | 1P TS1R9 |
| 60 (C Frame) | 3 | R9C3060U | | | | 3.50 (90.0) SF90SH5X5 | S4PR960 | | 2NO AC2N | 3P TS3R9CV |
| 100 (C Frame) | 3 | R9C3100U | | SH00 Red 3R, 12 SHR00N12 | SH0 Red 3R, 12 SHR0N12 | 5.91 (150.0) SF150SH5X5 | S4PR9100 | | | |
| | | | | SH00 Black 4, 4X SHB00N4X | SH0 Black 4, 4X SHB0N4X | 7.87 (200.0) SF200SH5X5 | | | | |
| | | | | SH00 Red 4 4X SHR00N4X | SH0 Red 4 4X SHR0N4X | 12.60 (320.0) SF320SH5X5 | | | | |