

# 8.3

## Rotary Disconnects

R9 Series (UL 98)

### Product Selection

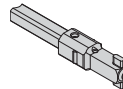
#### Direct Operation



#### External Operation



### Front and Right Side Operation



8

Ampere Rating (Frame) (Fuse Class)	Number of Poles	Switch Body Only	Direct Handle	External Selector Handle (Choose one)	Shaft Extension for Selector Handle Only (Choose one)	External Front Pistol Handle	External Right Side Pistol Handle
30 <sup>Ⓢ</sup> Compact (H-Frame) (CC)	3	<b>R4H3030FCC</b>	<b>DHR9HC</b>	Black 1,3R,12 <b>SHB0N12HV</b>	7.90 (200.0) <b>SF200SH5X5H</b>	Black 1,3R,12 <b>PHB1N12F</b>	—
30 <sup>Ⓢ</sup> (H-Frame) (CC)	3 + switched neutral	<b>R4H3030FCCSN</b>		Red 1,3R,12 <b>SHR0N12HV</b>	12.60 (320.0) <b>SF320SH5X5H</b>	Red 1,3R,12 <b>PHR1N12F</b>	
30 <sup>Ⓢ</sup> Compact (H-Frame) (J)	3	<b>R4H3030FJ</b>	<b>DHR9HJ</b>	Black 4,4X <b>SHB0N4XHV</b>	15.70 (400.0) <b>SF400SH5X5H</b>	Black 4,4X <b>PHB1N4XF</b>	
30 <sup>Ⓢ</sup> (H-Frame) (J)	3 + switched neutral	<b>R4H3030FJSN</b>		Red 4,4X <b>SHR0N4XHV</b>		Red 4,4X <b>PHR1N4XF</b>	
30 (I-Frame) (CC)	3 4	<b>R9I3030FCC</b> <b>R9I4030FCC</b>	<b>DHR9J2M</b>	—	—		
30 (J-Frame) (J)	2 3 4	<b>R9J2030FJ</b> <b>R9J3030FJ</b> <b>R9J4030FJ</b>				Black 4,4X (w/ TEST Position) <b>PHB1N4XFT</b>	Black 4, 4X <b>PHB1N4XS</b>
60 <sup>Ⓢ</sup> (J-Frame) (J)	2 3 4	<b>R9J2060FJ</b> <b>R9J3060FJ</b> <b>R9J4060FJ</b>				Red 4,4X (w/ TEST Position) <b>PHR1N4XFT</b>	Red 4, 4X <b>PHR1N4XS</b>

**Note**

Ⓢ 100 kA short-circuit rating.

### Direct Handle



Description	Ampere Rating (Frame)	Fuse	Catalog Number
Front operation. Black.	30 (H-Frame)	CC	<b>DHR9HC</b>
	30 (H-Frame)	J	<b>DHR9HJ</b>
	30 (I-Frame)	CC	<b>DHR9J2M</b>
	30–400 (J-, K-, L-, M-Frame)	J	<b>DHR9J2M</b>
	600–800 (N-Frame)	J/L	<b>DHR9N</b>

### S0 Type Handle



### Door Interlocked External Front Handles

Description	Ampere Rating (Frame)	Handle Type	NEMA Type	Color	Standard Catalog Number
The handle locking function of the front external operation handle prevents the user from opening the door of the enclosure when the switch is in the ON position, and when the switch is padlocked in the OFF position (PH1, PH2 and PH3 type handles only). Opening the door when the switch is in the OFF position is possible by defeating the locking function with the use of a tool (authorized persons only). The locking function is restored when the door is closed back.	30 (H-Frame)	S0	1, 3R, 12	Black	<b>SHB0N12HV</b>
	30 (H-Frame)	S0	1, 3R, 12	Red/yellow	<b>SHR0N12HV</b>
	30 (H-Frame)	S0	4, 4X	Black	<b>SHB0N4XHV</b>
	30 (H-Frame)	S0	4, 4X	Red/yellow	<b>SHR0N4XHV</b>
	30–60 (H-, I-, J-Frame)	PH1	1, 3R, 12	Black	<b>PHB1N12F</b>
30–60 (H-, I-, J-Frame)	PH1	1, 3R, 12	Red/yellow	<b>PHR1N12F</b>	
30–60 (H-, I-, J-Frame)	PH1	4, 4X	Black	<b>PHB1N4XF</b>	
30–60 (H-, I-, J-Frame)	PH1	4, 4X	Red/yellow	<b>PHR1N4XF</b>	
30–60 (H-, I-, J-Frame)	PH1	4, 4X	Black	<b>PHB1N4XFT</b> ①	
30–60 (H-, I-, J-Frame)	PH1	4, 4X	Red/yellow	<b>PHR1N4XFT</b> ①	
60–400 (K-, L-, M-Frame)	PH2	1, 3R, 12	Black	<b>PHB2N12F</b>	
60–400 (K-, L-, M-Frame)	PH2	1, 3R, 12	Red/yellow	<b>PHR2N12F</b>	
60–400 (K-, L-, M-Frame)	PH2	4, 4X	Black	<b>PHB2N4XF</b>	
60–400 (K-, L-, M-Frame)	PH2	4, 4X	Red/yellow	<b>PHR2N4XF</b>	
60–400 (K-, L-, M-Frame)	PH2	4, 4X	Black	<b>PHB2N4XFT</b> ①	
60–400 (K-, L-, M-Frame)	PH2	4, 4X	Red/yellow	<b>PHR2N4XFT</b> ①	
600–800 (N-Frame)	PH3	4, 4X	Black	<b>PHB3N4XF</b>	
600–800 (N-Frame)	PH3	4, 4X	Red/yellow	<b>PHR3N4XF</b>	

### PH1 Type Handle



### PH2 Type Handle



### PH3 Type Handle



### Right Side External Handles

Ampere Rating (Frame)	Handle Type	NEMA Type	Color	Standard Catalog Number
30–60 (J-Frame)	PH1	4, 4X	Black	<b>PHB1N4XS</b>
30–60 (J-Frame)	PH1	4, 4X	Red/yellow	<b>PHR1N4XS</b>
60–400 (K-, L-, M-Frame)	PH2	4, 4X	Black	<b>PHB2N4XS</b>
60–400 (K-, L-, M-Frame)	PH2	4, 4X	Red/yellow	<b>PHR2N4XS</b>

#### Note

① Includes TEST position.