

# 9

## Fuse holders and blocks

Class J (finger-safe) fuse holders

### Safety J™ — JT(N)60030 and JT(N)60060

#### Specifications

**Description:** Indicating and non-indicating finger-safe, DIN-Rail mount fuse holders for use with Class J fuses - (Bussmann series LPJ, JKS).

**Dimensions:** See dimensions illustrations.

#### Ratings:

Volts: — 600Vac

Amps: — 0-60A (JT(N)60060)

— 0-30A (JT(N)60030)

SCCR: — 200kA RMS Sym.

— 300kA self certified using Bussmann series LPJ\_SP fuses

**Agency information:** CE, Listed to UL 4248: Guide IZLT, File 14853, CSA Certified: Class 6225-01, File 47235. IP20 per IEC 60529.

**Flammability rating:** UL 94V0.

**Indication:** Min voltage: 90V; neon lamp “ON” when fuse opens, voltage source and current path are present.

**Terminations:** 30A dual port torque 20lb-in, 60A single port torque 45lb-in, terminal construction, tin-plated copper alloy.

**Wire size:** JT(N)60030 - rated for 75°C, AWG#18-#8; Cu only, JT(N)60060 - rated for 75°C, AWG#14-#4; Cu only.

(Note: For JT(N)60030 use both stranded or solid, in a variety of dual wire combinations of same wire size and type.)

#### Features and benefits

- Short-Circuit Current Rating of 300kA with Bussmann series LPJ\_\_SP fuses.
- Rapid, flexible 35 mm DIN-Rail mounting.
- One piece interlocking design for assembling multiple pole blocks reduces inventory costs.
- Removable fuse carrier allows fuse replacement away from base while maintaining finger-safe rating.

#### Typical applications

- Industrial controls
- Process controls
- Small HP VFDs

#### Catalog numbers

Catalog numbers	Amps	Indication
JT60030	30	Non-indicating
JT60060	60	Non-indicating
JTN60030	30	Indicating (neon)
JTN60060	60	Indicating (neon)



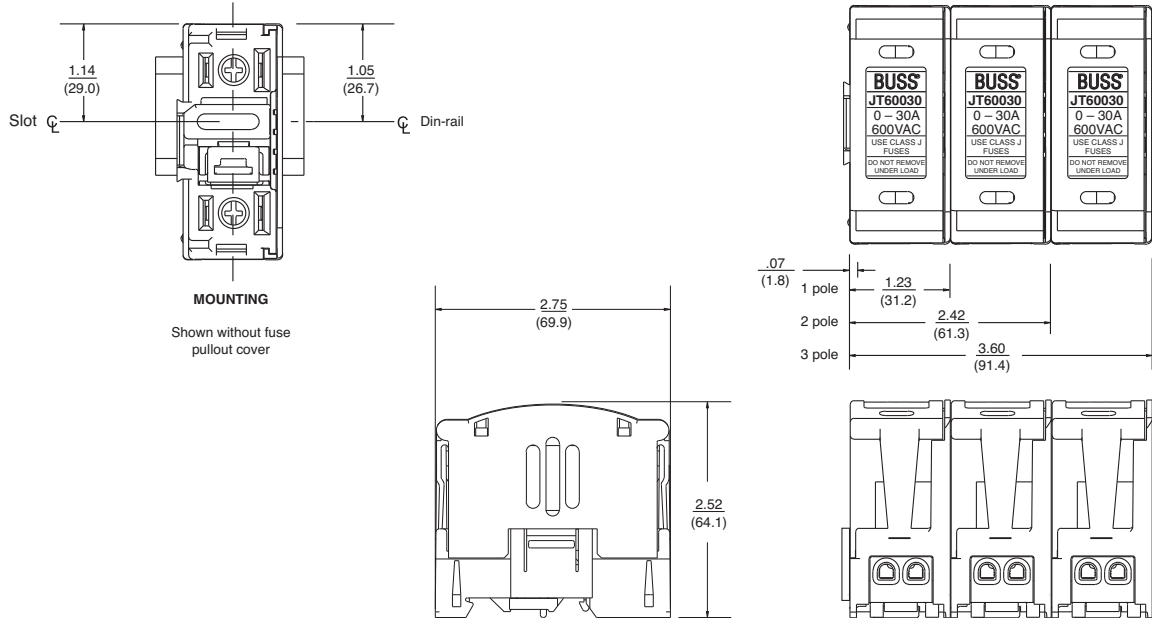
30A version



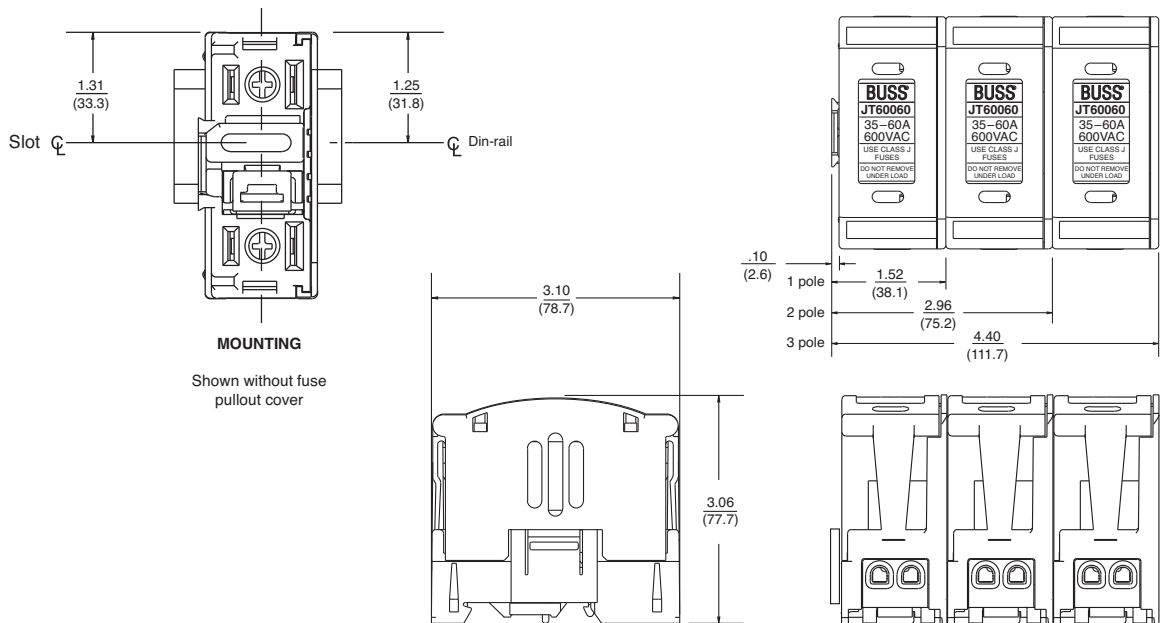
60A version

Data Sheet: 1152

### Dimensions for JT60030 and JTN60030 — in (mm)



### Dimensions for JT60060 and JTN60060 — in (mm)



JT(N)600 series fuse blocks can be dovetailed together within the same current rating to provide multiple pole block configurations.

NOTE: JT(N)60030 cannot be dovetailed to JT(N)60060.