

T&B Liquidtight Strain Relief Cord Connectors

The T&B Steel Liquidtight Strain Relief Cord Connector is suited for most general control and power cable applications. This series features sturdy neoprene bushings and tapered hub threads.

Application

- Provide means for passing a cord cable (armored or unarmored) into an enclosure, through a bulkhead or into a rigid conduit.
- Form a mechanical grip and water and/or oil-resistant seal for cord and unarmored or jacketed armored round cables.
- Form a non-slip connection or termination for flexible cord, cable (armored or unarmored).
- Provide grounding continuity of cable armor.

Cord & Cable Type

- S, SO, SV, ST, STD, SJ, SJO, SJT, SJTO, SVD

Features

- Extended range with superior strain relief.

- Reduced overall size, fits into tighter spaces.
- Gland nut designed to restrict cable bending.

Materials

Body: Steel-2920 series, Malleable Iron-4920 & 4960 series

Gland Nut, Grip: Steel-all series

Bushing: Rubber

Environment Classification

- Ordinary Locations
- Wet or dry locations

Range

Cord Range .125" to .950"

Hub Size Range 1/2" to 1"

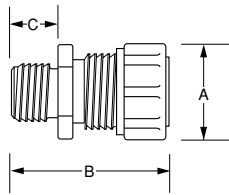


Fig. 1

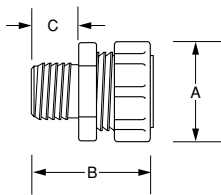


Fig. 2

Liquidtight Strain Relief Connectors

Cat. No.	Cable Size Range min.-max.	Hub Size	Throat Dia. (min.)	Fig.	Dimensions (in.)			Bushing Part No.	Gland-Nut Model No.	Retainer Model No.	Body Model No.
					A	B	C				
2516†	(.060-.125)	1/4"	23/64"	2	3/64"	1 7/16"	15/32"	035-73377-5	035-73377-3	035-73377-9	035-73377-1
2517†	(.120-.250)	1/4"	23/64"	2	1/64"	1 7/16"	15/32"	035-73377-6	035-73377-3	035-73377-9	035-73377-1
2518†	(.060-.150)	3/8"	29/64"	2	3/32"	1 1/2"	15/32"	035-73377-7	035-73377-4	035-73377-9	035-73377-2
2519†	(.150-.300)	3/8"	29/64"	2	3/32"	1 1/2"	15/32"	035-73377-8	035-73377-4	035-73377-9	035-73377-2
2520	(.125-.250)	1/2"	9/16"	1	1 1/2"	1 5/8"	5/8"	053-71411-1	053-71411-37	035-72735-1	053-71411-43
2521	(.250-.375)	1/2"	9/16"	1	1 1/8"	1 1/2"	5/8"	053-71411-2	053-71411-37	035-72735-1	053-71411-43
2522	(.375-.500)	1/2"	9/16"	1	1 1/8"	1 1/2"	5/8"	053-71411-3	053-71411-37	035-72735-2	053-71411-43
2523	(.450-.560)	1/2"	9/16"	1	1 1/8"	1 1/2"	5/8"	053-71411-4	053-71411-37	035-72735-2	053-71411-43
2524*	(.500-.625)	1/2"	5/8"	1	1 1/8"	1 3/4"	5/8"	053-71411-59	053-71411-38	035-72735-3	033-72259-21
2525*	(.625-.750)	1/2"	5/8"	1	1 1/8"	1 3/4"	5/8"	053-71411-60	053-71411-38	035-72735-3	033-72259-21
2530	(.125-.250)	3/4"	13/16"	1	1 1/8"	1 3/4"	9/16"	033-72259-1	053-71411-38	035-72735-4	053-71411-44
2531	(.250-.375)	3/4"	13/16"	1	1 1/8"	1 3/4"	9/16"	053-71411-5	053-71411-38	035-72735-4	053-71411-44
2532	(.375-.500)	3/4"	13/16"	1	1 1/8"	1 3/4"	9/16"	053-71411-58	053-71411-38	035-72735-4	053-71411-44
2534	(.500-.625)	3/4"	13/16"	1	1 1/8"	1 3/4"	9/16"	053-71411-59	053-71411-38	035-72735-3	053-71411-44
2535	(.625-.750)	3/4"	13/16"	1	1 1/8"	1 3/4"	9/16"	053-71411-60	053-71411-38	035-72735-3	053-71411-44
2536*	(.750-.880)	3/4"	3/4"	1	1 1/8"	1 5/16"	5/8"	053-71411-61	053-71411-39	035-72735-5	033-72259-22
2541	(.250-.375)	1"	49/64"	1	1 1/16"	1 23/32"	9/16"	053-71411-5	053-71411-38	035-72735-4	053-71411-45
2542	(.375-.500)	1"	49/64"	1	1 1/16"	1 23/32"	9/16"	053-71411-58	053-71411-38	035-72735-4	053-71411-45
2544	(.500-.625)	1"	49/64"	1	1 1/16"	1 23/32"	9/16"	053-71411-59	053-71411-38	035-72735-3	053-71411-45
2545	(.625-.750)	1"	49/64"	1	1 1/16"	1 23/32"	9/16"	053-71411-60	053-71411-38	035-72735-3	053-71411-45
2546	(.750-.880)	1"	49/64"	1	1 1/16"	1 7/8"	9/16"	053-71411-61	053-71411-39	035-72735-5	053-71411-46
2547	(.875-.985)	1"	49/64"	1	1 1/16"	1 7/8"	9/16"	053-71411-62	053-71411-39	035-72735-5	053-71411-46
2548*	(.880-1.065)	1"	29/32"	1	2 1/16"	2 3/8"	25/32"	053-71411-63	053-71411-40	035-72735-6	033-72259-23
2549*	(1.065-1.205)	1"	29/32"	1	2 1/16"	2 3/8"	25/32"	053-71411-64	053-71411-40	035-72735-6	033-72259-23
2558	(.880-1.065)	1 1/4"	1 1/64"	1	2 1/8"	2 5/8"	5/8"	053-71411-63	053-71411-40	035-72735-6	053-71411-47
2559	(1.065-1.205)	1 1/4"	1 1/64"	1	2 1/8"	2 5/8"	5/8"	053-71411-64	053-71411-40	035-72735-6	053-71411-47
2556*	(1.187-1.375)	1 1/4"	1 1/4"	1	2 5/16"	2 1/2"	13/16"	053-71411-18	053-71411-41	035-72735-7	033-72259-24
2557*	(1.375-1.485)	1 1/4"	1 1/4"	1	2 5/16"	2 1/2"	13/16"	033-72259-2	053-71411-41	035-72735-7	033-72259-24
2562	(.812-1.000)	1 1/2"	1 1/8"	1	2 5/16"	2 1/2"	13/16"	033-72259-3	053-71411-41	035-72735-7	053-71411-48
2563	(1.000-1.187)	1 1/2"	1 1/8"	1	2 5/16"	2 1/2"	13/16"	053-71411-17	053-71411-41	035-72735-7	053-71411-48
2564	(1.187-1.375)	1 1/2"	1 1/8"	1	2 1/4"	2 7/16"	1 1/16"	053-71411-18	053-71411-41	035-72735-7	053-71411-48
2565*	(1.375-1.625)	1 1/2"	1 29/64"	1	2 3/4"	2 3/8"	13/16"	053-71411-65	053-71411-42	035-72735-8	033-72259-25
2573	(1.125-1.375)	2"	1 7/8"	1	2 3/4"	2 5/8"	13/16"	053-71411-66	053-71411-42	035-72735-8	053-71411-49
2574	(1.375-1.625)	2"	1 7/8"	1	2 3/4"	2 5/8"	13/16"	053-71411-65	053-71411-42	035-72735-8	053-71411-49
2575	(1.625-1.875)	2"	1 7/8"	1	2 3/4"	3 1/2"	13/16"	053-71411-67	053-71411-42	035-72735-8	053-71411-49
2576*	(1.750-1.965)	2"	1 29/32"	1	3 3/32"	3 1/2"	13/16"	033-72259-5	033-72259-17	035-72735-9	033-72259-26
2577*	(1.937-2.187)	2"	1 29/32"	1	3 3/32"	3 1/2"	13/16"	033-72259-6	033-72259-17	035-72735-9	033-72259-26
2584	(1.750-1.965)	2 1/2"	2"	1	3 3/32"	3 3/4"	1 1/32"	033-72259-5	033-72259-17	035-72259-14	033-72259-27
2585	(1.937-2.187)	2 1/2"	2"	1	3 3/32"	3 3/4"	1 1/32"	033-72259-6	033-72259-18	033-72259-14	033-72259-27
2586*	(2.156-2.360)	2 1/2"	2 5/32"	1	3 5/16"	4 1/4"	1 1/32"	033-72259-7	033-72259-19	033-72259-15	033-72259-28
2587*	(2.350-2.565)	2 1/2"	2 5/32"	1	3 5/16"	4 1/4"	1 1/32"	033-72259-8	033-72259-19	033-72259-15	033-72259-28
2592	(2.156-2.360)	3"	2 19/32"	1	3 5/16"	4 1/4"	1 1/32"	033-72259-7	033-72259-19	033-72259-15	033-72259-29
2593	(2.350-2.565)	3"	2 19/32"	1	3 5/16"	4 1/4"	1 1/32"	033-72259-8	033-72259-19	033-72259-15	033-72259-29
2594	(2.535-2.750)	3"	2 19/32"	1	3 5/16"	4 1/4"	1 1/32"	033-72259-9	033-72259-19	033-72259-15	033-72259-29
2595*	(2.735-2.985)	3"	2 19/32"	1	4 1/16"	4 13/16"	1 1/8"	033-72259-10	033-72259-20	033-72259-16	033-72259-30
2596*	(2.970-3.220)	3"	2 19/32"	1	4 1/16"	4 13/16"	1 1/8"	033-72259-11	033-72259-20	033-72259-16	033-72259-30

For wire mesh grips refer to pages A119, A154.