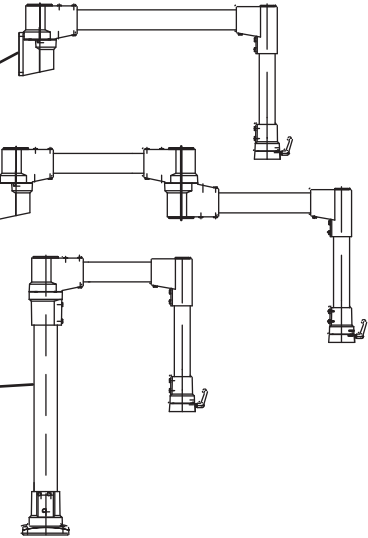
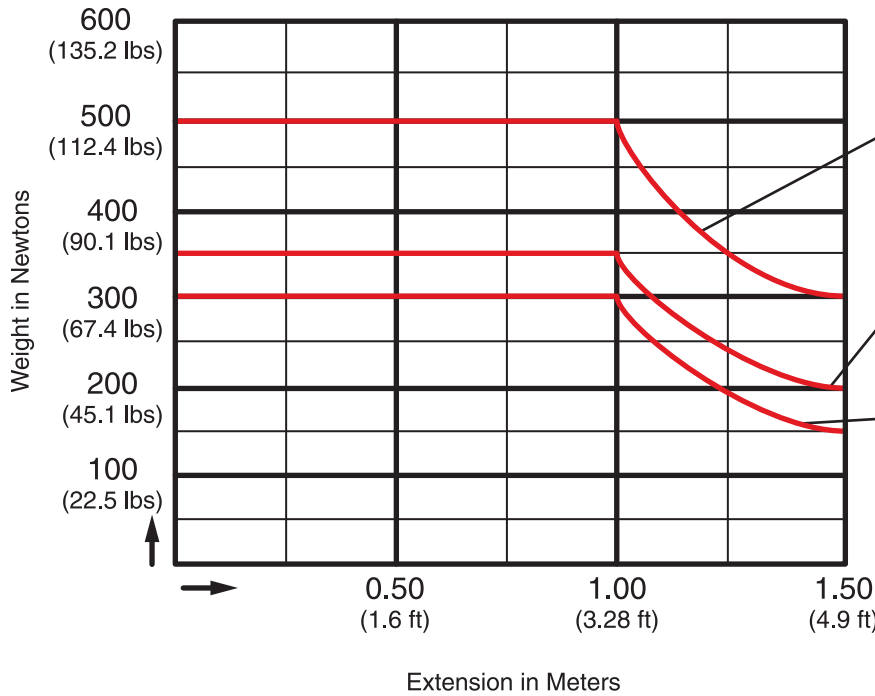


Suspension Systems - NEMA 12, 13

Tara Plus Suspension System

Operator Interface Enclosure



Measurement Conversions

1 kg = 9.81 N **1 lb = 4.44 N**
 e.g. 500 Newtons = 51 kg = 112.4 lbs
 300 Newtons = 30.6 kg = 67.4 lbs
 100 Newtons = 10.2 kg = 22.5 lbs
1 foot = 0.305 m

Suspension System

Application

- Taraplus enclosure suspension systems are designed for light and medium loads.
- The strength of tube and cast fittings provide a highly flexible robust system.

Standards

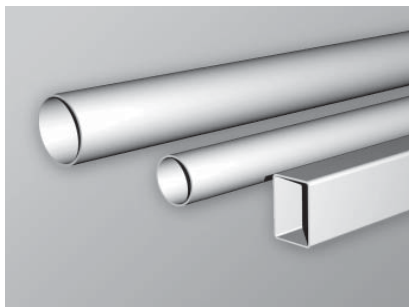
- **Complies with**
 - IEC 60529 IP54

Construction

- Enclosure coupling and elbow coupling fittings are die-cast from G AL SI 12 aluminum.
- Suspension tubing is steel.

Finish

- Fittings are finished in RAL 7040 window gray.
- Suspension tubing is RAL 7035 light gray.



Suspension Tube

| Part No. | Outside mm | Inside mm | Tolerance | Length | | Ship Wt. lbs |
|--------------------------|------------|-----------|-----------|--------|------|--------------|
| | | | | Metres | Feet | |
| Round Tubes | | | | | | |
| R144-301-000 | 48 | 42 | ±0.25 | 1 | 3.28 | 10 |
| R144-321-000 | 70 | 62 | ±0.25 | 1 | 3.28 | 25 |
| R144-321-500 | 70 | 62 | ±0.25 | 1.5 | 4.92 | 38 |
| Rectangular Tubes | | | | | | |
| R144-311-000 | 60 x 40 | 54 x 34 | ±0.50 | 1 | 3.28 | 13 |
| R144-311-500 | 60 x 40 | 54 x 34 | ±0.50 | 1.5 | 4.92 | 26 |

Technical references and CAD downloads available at www.hammondmfg.com

All dimensions in inches unless specified otherwise