



Multimedia wallplates

Our home theater solutions make it easy to surround yourself with sound, simplify home theater connections and provide simple, clean ways to manage cable installations for home electronics. Cable management plates come in a variety of configurations, can accommodate all cable run needs and can even provide surge protected power.


Multimedia wallplate families

Multimedia wallplates with surge protection



D-8

Multimedia wallplates with receptacles



D-9

Multimedia wallplates

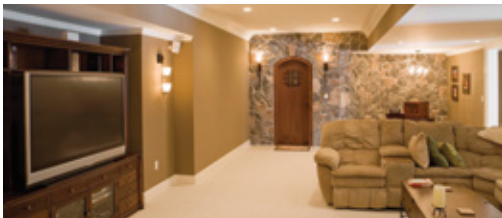


D-9

- Multimedia wallplates are ideal for both new construction and retrofit
- Multimedia wallplates with surge protection or receptacles are ideal for flat panel TV installations
- Multimedia wallplates with surge protection receptacles protect expensive electronics from power surges and have replaceable surge protection modules
- Multimedia wallplates are mountable in either direction
- All multimedia wallplates eliminate unsightly wires, cables, and cords



Specific multimedia wallplate solutions for today's needs



Power & surge protection

Manage cables and provide power-choose wallplates that integrate receptacles or surge protection receptacles with replacement surge modules for protection of electronics.

See pages D-8



Shown:
35M2S



Cable management

A recessed, low-profile reverse nose design provides attractive, neat and clean installation, eliminating unsightly wires and plug heads while allowing mounting in either direction.

See pages D-9



Shown:
35M1

Multimedia wallplates with surge protection

Product description

2-pole, 3-wire grounding
15A, 125V/AC



5-15R



35M2S

Design features

- Protects expensive electronics from surge strikes
- Protection up to 12kA peak surge current, 340J energy rating, 600Vpk voltage protection rating
- Large cable organizer opening for all popular low-voltage cables to manage and conceal cables
- Audible signal alerts you to protection failure
- Allows for continued use of receptacle after protection failure
- Provides simple surge module replacement without re-wiring device
- Mounts horizontally or vertically, to help customize installation
- Ideal solution for flat panel TV installations
- Easy to install with no additional parts needed

Modular jacks & adapters



A	Rating V/AC	Description	Color	Catalog no.
15	125	Multimedia wallplate with recessed duplex surge receptacle	W	□ 35M2S-W

cETLus listed to UL1863 & ANSI/UL60950-1, CSA C22.2 no. 60950-1-03; complies with all TIA/EIA 568-A & 570-B requirements

Replacement surge bloc module



Description	Color	Catalog no.
Replacement module	W	□ 1209W

Color ordering information:

W (White)



(White)

Specification information: Please visit www.eaton.com/wiringdevices

Compliances, specifications and availability are subject to change without notice.

Multimedia wallplates with receptacles

Product description

2-pole, 3-wire grounding
15A, 125 V/AC

Design features

- Provides power receptacle and cable management in one convenient unit
- Large cable organizer opening for all popular low-voltage cables to manage and conceal cables
- Tamper resistant receptacles provide compliance with 2014 NEC® Article 406.12 which states that all 15A and 20A, 125V/AC receptacles installed in dwelling units must be tamper resistant
- Mounts horizontally or vertically, to help customize installation
- Easy to install with no additional parts needed
- Mounting clamps included
- Ideal solution for flat panel TV installations



35MR



35M1



35M2

Cable management wallplate with power receptacle



A	Rating V/AC	Description	Color	Catalog no.	
15	125	Multimedia wallplate with recessed single receptacle, side wire	W	□ 35MRW	•

cETLus listed to UL1863 & ANSI/UL60950-1, CSA C22.2 no. 60950-1-03; complies with all TIA/EIA 568-A & 570-B requirements

Multimedia wallplates

Product description

Standard size

Design features

- Rugged thermoplastic construction resists breakage for long durable use
- Offers flexibility for new construction or retrofit
- Perfect for flat panel TV installations
- Mounts horizontally or vertically, to help customize installation
- Organized, clean appearance eliminates unsightly wires, cables and cords

Mid-size



Description	Color	Catalog no.	
1-gang multimedia wallplate	W	□ 35M1W	•
2-gang multimedia wallplate	W	□ 35M2W	•

cETLus listed to UL1863 & ANSI/UL60950-1, CSA C22.2 no. 60950-1-03; complies with all TIA/EIA 568-A & 570-B requirements

Color ordering information:

W (White)



(White)

Specification information: Please visit www.eaton.com/wiringdevices

Compliances, specifications and availability are subject to change without notice.

