

# Molded Case Circuit Breakers

## Record Plus™ FC 100

External Accessories

### Lugs and Lug Kits

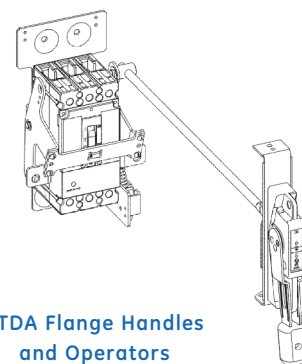
Amp Range	Wire Range	Strip Length	Single Lug Product No.	Lug Kit Product No. (Set of 3)
15-20A	14-10 Cu/Al	.40-.50"	FCAL12	FCALK12
25-60A	10-4 Cu/Al	.40-.50"	FCAL13	FCALK13
70-100A	4-1/0 Cu/Al	.40-.50"	FCAL14	FCALK14

### Lug Tightening Torque

Wire Size	Torque
#10 AWG	35 in-lb
#8 AWG	40 in-lb
#6-#4 AWG	45 in-lb
#3 AWG - 1/0	50 in-lb

### Handles and Handle Accessories

Type	Description		Product No.
STDA Flange Handles, Operators, and Hardware Kits	Flange Handle for Variable Depth Operating Mechanism	Same as Spectra™: 6-inch for NEMA 12/13	STDA1
		Same as Spectra™: 10-inch for NEMA 12/13	STDA2
		Same as Spectra™: 6-inch for NEMA 4/4X	STDA1X
		Same as Spectra™: 10-inch for NEMA 4/4X	STDA2X
	Flange Operating Mechanism	Operating Mechanism Only	FCNFM
	Flange Stiffener Kit	Use with FCNFM	TDSR
	Extender Kit	Use with FCNFM	TDSR
	Extended Drive Stud	Use with FCNFM	TDS1
	Door Hardware Kit NEMA12/13	Door Hinged on Left, NEMA 12/13, 2-point Kit	TDV1
	Door Hardware Kit NEMA 4/4X	Door Hinged on Left, NEMA 4/4X, 2-point Kit	TDV1X
Third Point Latch Kit	For Use With TDV1/TDV1X Above	TDV3	
Door Hardware Kit NEMA12/13	Door Hinged on Right, NEMA 12/13 2-point Kit	TDV1L	
Third Point Latch Kit	For Use with TDV1L, TDC1LX Above	TDV3L	
Auxiliary Contact Kits	DPDT for STDA Handle on Right		TDAS1L2
	DPDT for STDA Handle on Left		TDAS1R2

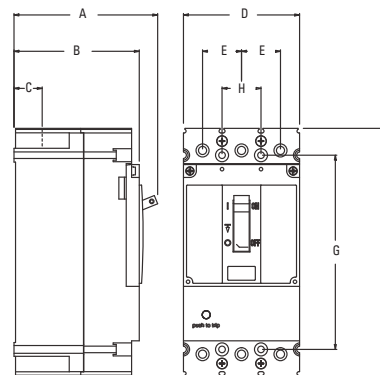


STDA Flange Handles and Operators

### Dimensions in. (mm)

#### FC 100 Dimensions

Frame	A	B	C	D	E	F	G	H
FC	3.7 (29.1)	3.2 (81.3)	.96 (24.4)	3.0 (76.2)	1.0 (25.4)	6.4 (162.6)	5.0 (127.0)	1.0 (25.4)



FC 100 Amp Dimensions



# Molded Case Circuit Breakers

## Record Plus™ FE 250

Internal and External Accessories

# Section 6

### Mounting Screw Kits

Description	Product Number
Mounting Screw Kit (#10) for Tapped Holes	FEMSK1

### Padlocking Device

Description	Product Number
EUSERC Compliant Padlock	FE1PE

### Other Accessories

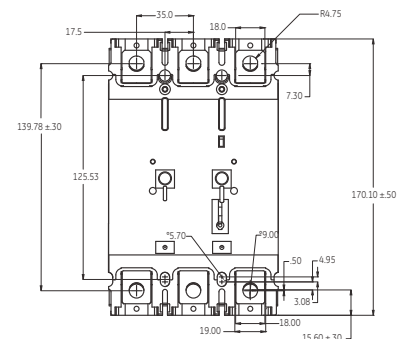
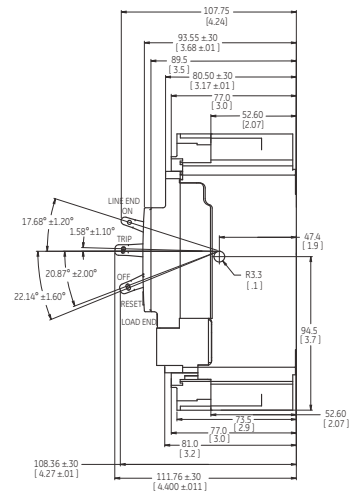
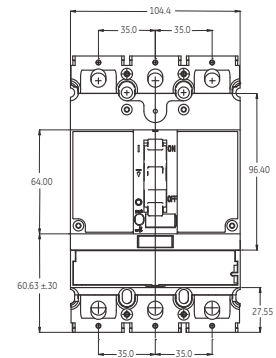
Description	Product Number
Fin Cover	FEUA3
Terminal Shield Fin Cover	FEJS3
Nut Plate / Terminal Shoe	FEJN3

### External Operators

Type	Description	Product Number	
STDA Flange Handles and Hardware Kits	Same as Spectra 6 inch for NEMA 12/13	STDA1	
	STDA Flange Handle for Variable Depth Operating Mechanism	STDA2	
	Same as Spectra 10 inch for NEMA 12/13	STDA1X	
	Same as Spectra 6 inch for NEMA 4/4X	STDA2X	
	Same as Spectra 10 inch for NEMA 4/4X	STDA2X	
	Flange Stiffener Kit	TDSR	
	Extender Kit	TDSR	
	Extended Drive Stud	TDS1	
	Door Hardware Kit NEMA 12/13	Door Hinged on Left, NEMA 12/13 2-point Kit	TDV1
	Door Hardware Kit NEMA 4/4X	Door Hinged on Left, NEMA 4/4X 2-point Kit	TDV1X
Third Point Latch Kit	For Use with TDV1L, TDC1LX Above	TDV3	
Door hardware Kit NEMA 12/13	Door Hinged on Right, NEMA 12/13 2-point Kit	TDV1L	
Third Point Latch Kit	For Use with TDV1L, TDC1LX Above	TDV3L	
TDM Style Handle Operators	Handle for FENRM2 / FENRM4	THCH45	

### Dimensions in. (mm)

#### FE 250 Dimensions



# Molded Case Circuit Breakers

## External Accessories

### Flange-Mounted Operators

## Section 6

### Type STDA Flange Handles and Variable Depth Operating Mechanisms

- Designed to meet automotive duty specifications
- NEMA 12/13 and 4/4X UL Component Recognized components, File E-572531 CSA LR 10263
- For right or left hand flange mounting – field convertible
- Mounting dimensions to fit standard flange enclosures 8 inches – 24 inches deep
- Detailed installation instructions
- Superior strength

### Flange Handle Construction

- Rugged die cast housing with provisions for locking in OFF position with up to three 3/16-inch to 5/16-inch padlocks
- O-ring seals for dirt-tight/oil-tight duty
- Gusseted, 3/32-inch thick double-sided steel handle with large, red-black self-extinguishing grade plastic grip.

### Flange Handle Selection

Product Number STDA1 (6 inch) and STDA2 (10 inch) flange series handles are interchangeable. While the SE150 through SG600 operating mechanisms can be easily operated with the 6-inch STDA1 handle, the 10-inch STDA2 may be used to obtain lower operating force and/or to provide a proportionally larger handle on large enclosures. STDA3 and STDA3X can be used only with SDOM6 (for SK1200) operating mechanism.

NEMA 12/13 Flange Handle Product Number	NEMA 4/4X Flange Handle Product Number	Nominal Length Inches	Installation Instruction Number	Drilling Template Number
STDA1	STDA1X	6		
STDA2	STDA2X	10	GEH-5314	GEH-5314
STDA3	STDA3X	10		

### Operating Mechanism Selection

Circuit Breaker Type	Flange Handle Product Number	Operating Mechanism Product Number
SE150	STDA1, 1X (6 inch)	SDOM1A
SF250	or	SDOM3
SG600	STDA2, 2X (10-inch)	SDOM4
SK1200 <sup>1</sup>	STDA3, 3X	SDOM6 <sup>1</sup>
TEB, TED, THED, TEC, TB1		SDOM1A
TB1 and TEC with TECL		SDOM1AP <sup>5</sup>
THLC1 (150A)		TDOM1D
J-Frames, TJC (400, 600A) <sup>2</sup>	STDA1, 1X (6 inch)	TDOM4
or		
TB4 (400A) TJH/TJL <sup>3</sup> (600A Max)	STDA2, 2X (10-inch)	TDOM5
TB6 (600A), TB8 (800A)		TDOM7
TKH/TKLD <sup>4</sup> (1200A Max)		

<sup>1</sup>Requires STDA3 or STDA3X (10 inch, SK1200 only).

<sup>2</sup>Includes TJ/TJH/TJL.

<sup>3</sup>Use TDOM5 for TJH/TJL.

<sup>4</sup>Use TDOM7 for TKH/TKL.

<sup>5</sup>Adapter plate required to use SDOM1A on TB1 and TEC with TECL limiter.

### Flange Stiffener Kit or Extended Length Drive Rod, Product Number TDSR

Provides rigid 3/8-inch diameter rod between STDA handle mounting surface (flange or center mullion) and operating mechanism when STDA handle would otherwise not be rigidly supported.

Rod length is 22 inches and may be cut to appropriate length. Also used as extended-length drive rod for SDOM1A and SDOM3 when standard 16 inch rod is not long enough. (Operating mechanism Product Number SDOM6 for SK1200 includes two 22" unique 3/8-16x22 inch flange stiffener rods, Product Number TDSR and drive rod.)

Operating Mechanism Product Number	Flange Stiffener Kit Product Number	Extended Drive Rod Product Number
SDOM1A, SDOM3, TDOM1A through TDOM3	TDSR	TDSR
SDOM4, TDOM4 through TDOM7	TDSR (16" supplied with operating mechanism)	TDSR1

### Extended Drive Stud, Product Number TDS1, TDS2

This optional drive study permits locating the operating mechanism 1-5/16 inches farther to the left (When flange handle is on right side) or to the right (when handle is on the left side) to accommodate specific mounting restrictions. Not suitable for use with SDOM4, SDOM6, TDOM4 and TDOM5 operating mechanisms.

Operating Mechanism Product Number	Extended Drive Stud Product Number
SDOM1A, SDOM3, TDOM1A through TDOM3	TDS1
TDOM6, TDOM7	TDS2

### Door Hardware NEMA 12/13 and 4/4X

Type TDV door hardware provides sealing and interlocking of 3/4-inch nominal door depth hinged on left or right. Interlocking design requires use of screwdriver to release. When used with an STDA flange handle and operating mechanisms, disconnect or circuit breaker cannot be turned on unless door and door hardware have been closed. For noninterlocking type, one bracket in kit is not used. Use of third point latch recommended for doors 40 inches or longer.

Description	Door Hinged on Left Product Number	Door Hinged on Right Product Number
NEMA 12/13 two point interlocking door hardware kit	TDV1	TDV1L
NEMA 4/4X two point interlocking door hardware kit	TDV1X	
Third point latch kit for above	TDV3	TDV3L

