

One-Piece Non-Metallic Boxes

Single and 2-gang boxes for retrofit installations. **Provides fast installation with a hole saw.**

FEATURES AND BENEFITS

- Easiest and fastest installation of a device in a retrofit project
- Single-gang FD1RP installs with a 3.5" hole saw and 2-Gang FD2RP installs with a 4.5" hole saw
- Textured paintable front surface
- Adjusts to fit 1/4" to 1-1/2" wall thicknesses
- Mounting wings hold bracket securely against wall when screws are tightened
- Finishes with any standard, mid-size, or maximum wall plate
- Secure, level device installation
- Includes an installed NM cable connector
- 2-hour fire rating



FD1RP

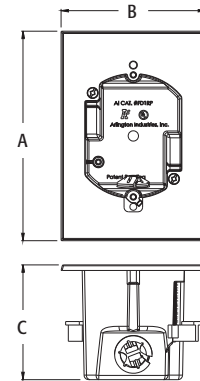
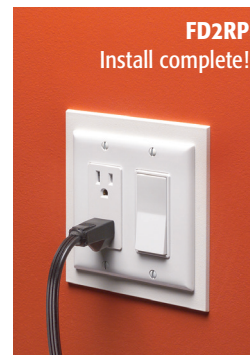


FD2RP

CATALOG NUMBER	UPC/DCI/NAED MFG #018997	DESCRIPTION/ ATTACHMENT	UNIT PKG	STD PKG	DIM A	DIM B	DIM C
FD1RP	75229	Single-Gang / 18.0 cu. in. / 3.5" diam. hole saw	25	25	5.635	3.885	3.085
FD2RP	75301	2-Gang / 31.0 cu. in. / 4.5" diam. hole saw	10	10	5.704	5.454	2.938

Add suffix "GC" to Catalog # when ordering from Canada to include grounding clip, for example FD1RPGC.

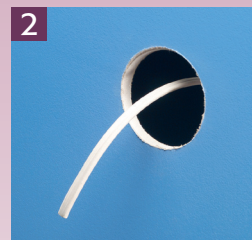
PATENTED.



INSTALLATION INSTRUCTIONS



1
Determine box location. Cut opening with a hole saw; 3.5" for single-gang FD1RP, 4.5" for the 2-gang FD2RP.



2
Pull cable(s) from behind the wall. (Easy cable access is another reason to use Arlington's FDRP boxes.)



3
Push cable through connector. Insert box into the opening. Shown with single-gang FD1RP.



4
Level the box. Tighten the mounting wing screws to pull the box snug against the drywall.



5
If desired, paint front surface to match wall. Install device.



6
Finish with any standard or mid-size wall plate. (Front surface shown unpainted.)

Scan For Video

