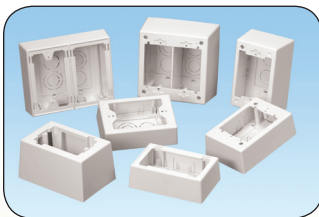
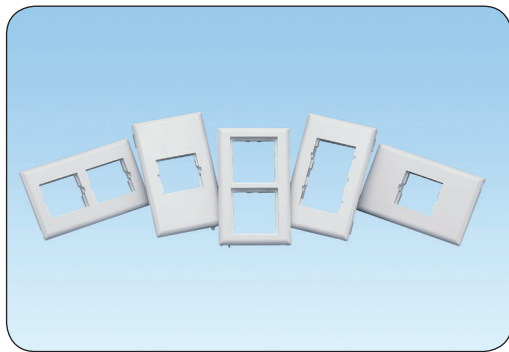


Pan-Way® Snap-On Faceplates and Surface Mount Outlet Boxes

Pan-Way® Snap-On Faceplates are designed for use with Panduit surface raceway systems and install faster than conventional screw-on faceplates, reducing labor costs and providing a more aesthetic appearance. Pan-Way® Snap-On Communication Faceplates are available in vertical and horizontal orientation and accept Panduit® Mini-Com® Copper and Fiber Optic Modules. Electrical outlets are available in colors to complement Panduit raceway and are available in 20 A, 106 duplex, rectangular, TVSS and GFCI.



- Snap-On faceplates install without the use of screws providing faster installation and superior aesthetics
- Fast-Snap™ Boxes assemble without the use of screws and accept Pan-Way® Snap-On Faceplates
- Snap-On communication faceplates are available in horizontal or vertical sloped outlet configurations
- Snap-On electrical faceplates are available in 106 duplex or rectangular styles

Surface mount outlet boxes are available for both power and communication applications. They are compatible with Pan-Way® LD, LDPH, LD2P10 and T-45 Raceway Systems. Pan-Way® Snap-On Faceplates mount directly to TG-70, T-70, Twin-70 raceways, Pan-Way® Fast-Snap™ Boxes and Pan-Pole™ Aluminum Outlet Poles.

A. About Panduit

B. Copper Systems

C. Fiber Systems

D. Faceplates, Outlet Frames & Surface Mount Boxes

E. Keystone Cabling Systems

F. Zone Cabling

G. Cable Routing Systems

H. Surface Raceway

J. Cabinets, Racks & Cable Management Systems

K. Power Management

L. Grounding & Bonding

M. Identification Products

N. Cable Management Accessories

O. Part Number Index

A. About Panduit



Pan-Way® Fast-Snap™ Surface Mount Outlet Boxes

- JB1FS and JBP2FS assemble without the use of screws for faster installation
- JB1FS and JBP2FS accept Pan-Way® Snap-On Faceplates for superior aesthetics
- JB1FS and JBP2FS are supplied with adhesive backing to speed installation

B. Copper Systems

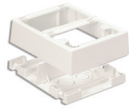
C. Fiber Systems



JB1FS**-A JBP1FS**

D. Faceplates, Outlet Frames & Surface Mount Boxes

E. Keystone Cabling Systems



JBP2FS**

F. Zone Cabling

G. Cable Routing Systems

H. Surface Raceway

J. Cabinets, Racks & Cable Management Systems

K. Power Management

L. Grounding & Bonding

M. Identification Products

N. Cable Management Accessories

O. Part Number Index

Part Number	Part Description	Color‡	Std. Pkg. Qty.	Std. Ctn. Qty.
JB1FSIW-A	Single gang two-piece snap together outlet box with adhesive backing. Box accepts Pan-Way® Snap-On Faceplates. For use with Pan-Way® T-45 or LD profile raceway. Dimensions: 5.00"L x 3.26"W x 1.62"H (127.1mm x 82.7mm x 41.1mm). Breakouts for 1/2", 3/4", or 1" diameter conduit.	Off White	1	10
JBP1FSIW	Single gang power rated two-piece snap together outlet box. Box accepts Pan-Way® Snap-On Faceplates. For use with Pan-Way® T-45 or LD, LDP, LDPH profile raceways. Dimensions: 5.00"L x 3.26"W x 1.62"H (127.1mm x 82.7mm x 41.1mm). Breakouts for 1/2", 3/4", or 1" diameter conduit.	Off White	1	10
JBP2FSIW	Double gang power rated two-piece snap together outlet box. Box accepts Pan-Way® Snap-On Faceplates. For use with Pan-Way® T-45 or LD profile raceway. Dimensions: 5.00"L x 6.14"W x 1.62"H (127.1mm x 155.9mm x 41.1mm). Breakouts for 1/2", 3/4", or 1" diameter conduit.	Off White	1	10

‡For other colors replace IW (Off White) with EI (Electric Ivory) or WH (White). For complete labeling solutions refer to www.panduit.com.



Pan-Way® Classic Series Snap-On Faceplates for Use with Panduit® Mini-Com® Modules

Can be used with Pan-Way® TG-70, T-70, Twin-70, T-45 Raceway Systems, Fast-Snap™ Outlet Boxes and Pan-Pole™ Aluminum Outlet Pole



T70FH2 T70FH4



T70FV2 T70FV4

Part Number	Part Description	Color‡	Std. Pkg. Qty.	Std. Ctn. Qty.
T70FH2IW	Snap-On horizontal sloped communication faceplate. Accepts two Panduit® Mini-Com® Modules (not included). No additional mounting hardware required.	Off White	1	10
T70FH4IW	Snap-On horizontal sloped communication faceplate. Accepts four Panduit® Mini-Com® Modules (not included). No additional mounting hardware required.	Off White	1	10
T70FV2IW	Snap-On vertical sloped communication faceplate. Accepts two Panduit® Mini-Com® Modules (not included). No additional mounting hardware required.	Off White	1	10
T70FV4IW	Snap-On vertical sloped communication faceplate. Accepts four Panduit® Mini-Com® Modules (not included). No additional mounting hardware required.	Off White	1	10

‡For other colors replace IW (Off White) with EI (Electric Ivory) or WH (White). For complete labeling solutions refer to www.panduit.com.