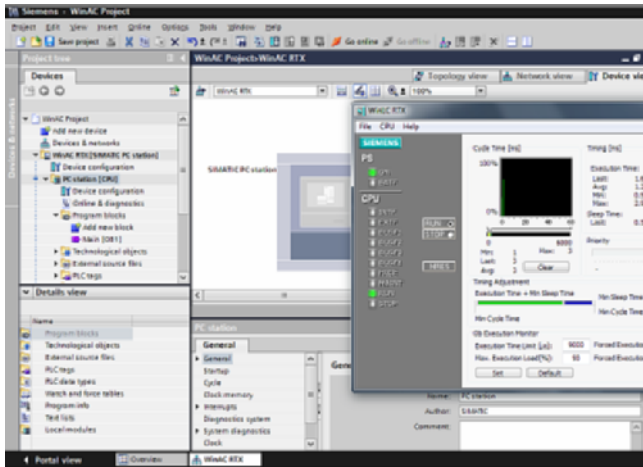


## PC-based Automation

### Software controllers

#### SIMATIC WinAC RTX

##### Overview



- SIMATIC WinAC RTX:  
Optimized for applications that require a high degree of flexibility and integration capability.
- The software solution for tasks that require hard deterministic behavior and high performance.
- With real-time expansion for assuring deterministic behavior for the control section.

New with WinAC RTX 2010 SP1:

- SIMATIC IPC427D and IPC477D are fully supported
  - Communication via onboard CP 5622
  - Retentive memory
  - LED display of the operating status
- Support for the new PROFIBUS CP 5612 (PCI) and CP 5622 (PCIe)

##### Ordering data

##### Article No.

###### SIMATIC WinAC RTX 2010

6ES7671-0RC08-0YA0

Software PLC for PC-based automation tasks with stringent deterministic requirements; PROFIBUS and PROFINET; CD-ROM with electronic documentation d, e, f; single license, executable under Windows XP SP2 and SP3 as well as Windows 7 (32 bit)

###### SIMATIC WinAC RTX 2010 Upgrade

6ES7671-0RC08-0YE0

For upgrading from basic/RTX V3.x, V4.0, V4.1 2005, 2008 and 2009; single license, executable under Windows XP SP2 and SP3 and Windows 7 (32 bit)

###### CP 5612 communications processor

6GK1561-2AA00

PCI card (32 bit) for connection of a programming device or PC to PROFIBUS

###### CP 5622 communications processor

6GK1562-2AA00

PCI Express x1 card (32 bit) for connection of a programming device or PC to PROFIBUS

###### CP 5603 Microbox Package

6GK1560-3AU00

Comprising CP 5603 module and Microbox expansion rack

###### CP 5613 A3 communications processor

6GK1561-3AA02

PCI card (32-bit; 3.3 V/5 V) for connection to PROFIBUS incl. DP-Base software; DP-RAM interface for DP master, incl. PG and FDL protocols; single license for one installation, runtime software, software and electronic manual on CD-ROM, Class A, for operating system support, see SIMATIC NET software V12; English/German

###### CP 5623 communications processor

6GK1562-3AA00

PCI Express x1 card (32 bit) for connection to PROFIBUS incl. DP-Base software with NCM PC; DP-RAM interface for DP master or DP slave, incl. PG and FDL protocols; single license for 1 installation, runtime software, software and electronic manual on CD-ROM, Class A, for operating system support, see SIMATIC NET software; German/English

###### CP 1616 communications processor

6GK1161-6AA02

PCI Card (32 bit; 3.3/5 V universal key) with ASIC ERTEC 400 for connecting PCs to PROFINET IO with 4-port real-time switch (RJ45); incl. IO-Base software for PROFINET IO controller (RT operation) and NCM PC; single license for one installation, runtime software, software and electronic manual on CD-ROM, Class A, for 32 bit Windows XP Professional; German/English