

A.
About
Panduit

B.
Copper
Systems

C.
Fiber
Systems

D.
Faceplates,
Outlet
Frames &
Surface
Mount Boxes

E.
Keystone
Cabling
Systems

F.
Zone
Cabling

G.
Cable
Routing
Systems

H.
Surface
Raceway

J.
Cabinets,
Racks &
Cable
Management
Systems

K.
Power
Management

L.
Grounding
&
Bonding

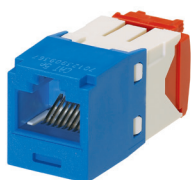
M.
Identification
Products

N.
Cable
Management
Accessories

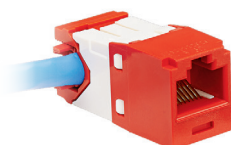
O.
Part
Number
Index

Mini-Com® TX5e™ UTP Jack Modules

- Exceeds ANSI/TIA-568-C.2 Category 5e and IEC 60603-7-2 component standards from 1 to 100 MHz
- Superior headroom performance supported in densities up to 48 in 1 RU
- Terminates full range of 22 – 26 AWG conductors (Standard, Right Angle, Shuttered jacks) allowed per ANSI/TIA-568-C.2
- 28/30 AWG jack for terminating 28 AWG solid or stranded to 30 AWG solid conductors
- UL 1863 approved
UL 2043 approved (standard, right angle, shuttered)
- Operating temperature of -10°C to 65°C (14°F to 149°F)
- Supports IEEE 802.3af, 802.3at, and IEEE 802.3bt type 3 and 4 for PoE applications up to 100 W
- Meets IEC 60512-99-001 for 2500 cycles of engaging and separating conductors under electrical load
- Each jack is 100% tested to ensure NEXT and RL performance and is individually serialized for traceability
- Contacts plated with 50 microinches of gold
- Accept 6 and 8-position modular plugs without damage
- Utilize patented Giga-TX™ Technology for jack terminations which maintains cable pair geometry and eliminating conductor untwist
- Can be re-terminated a minimum of 20 times
- Universal termination cap is color-coded for T568A and T568B wiring schemes
- Right angle jack module or wire cap allows installation in areas with minimal depth so to not violate cable bend radius
- Spring shuttered jack module has a spring shuttered door that opens and closes automatically with plug insertion or removal to prevent dust or debris from accumulating on contacts
- No punchdown tool required; termination tool (EGJT) ensures conductors are fully terminated
- Optional tool (TGJT) reduces termination time by 25% for high-volume installations



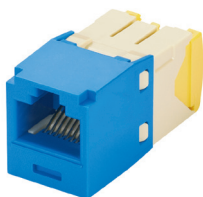
CJ5E88TGBU



CJR5E88TGRD



CJH5E88TGBL



CJT5E88TGBU

Part Number	Part Description	No. of Module Spaces	Std. Pkg. Qty.	Std. Ctn. Qty.
-------------	------------------	----------------------	----------------	----------------

Standard Jack Modules

CJ5E88TG‡	Category 5e, RJ45, 10 Gb/s, 8-position, 8-wire universal module.	1	1	50
CJ5E88TG‡-24	Category 5e, RJ45, 10 Gb/s, 8-position, 8-wire universal module bulk packaged in quantities of 24.	1	24	240
CJ5E88TG‡-C	Category 5e, RJ45, 10 Gb/s, 8-position, 8-wire universal module bulk packaged in quantities of 100.	1	100	100

Right Angle Jack Modules

CJR5E88TG‡	Category 5e, RJ45, 10 Gb/s, 8-position, 8-wire universal module with right angle wire cap.	1	1	50
CJRCAPRD	Right angle wire cap for use with any TX6™ PLUS UTP jack.	1	10	100

Spring Shuttered Jack Module

CJH5E88TG‡	Category 5e, RJ45, 10 Gb/s, 8-position, 8-wire universal module with spring shuttered door that automatically opens and closes with plug insertion or removal.	1	1	50
------------	--	---	---	----

28/30 AWG Jack Module

CJT5E88TG‡	Category 5e, RJ45, 10 Gb/s, 8-position, 8-wire universal module for 28 AWG solid/stranded to 30 AWG solid.	1	1	50
------------	--	---	---	----

‡Colors available: IW (Off White), EI (Electric Ivory), IG (International Gray), AW (Arctic White), BL (Black), BU (Blue), GR (Green), RD (Red), OR (Orange), VL (Violet), YL (Yellow), or WH (White).

Termination tools available on page B.59.

RJ45 blockout device available on page B.57.

Dust cap available on page B.59.

To ensure optimal performance, Panduit recommends use with other Panduit TX5e™ Components.

For Labeling and Identification (Section M), see pages M.1 thru M.18.

For additional product information, refer to www.panduit.com.