

Mounting rails

The mounting rail can also be used as a protective busbar. Weidmüller PE terminals of the W and SAK series meet the requirements specified in VDE 0611 Part 3. In accordance with VDE 0100 Part 540, at conductor cross-sections of 10 mm² and more, protective conductor and neutral conductor can be combined into one line with the symbol OPEN. If mounting rail is used as a PEN busbar, the following criteria must be observed:

- Only an E-Cu profile may be used
- The short-circuit currents and the rated terminal currents must be observed.
- The mounting rails must be insulated for the protective measure, "protective insulation"

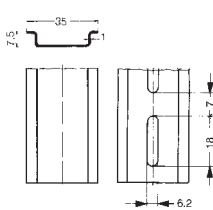
Depending on the various applications, the mounting rails are made of steel, aluminium or copper. All steel versions are electroplated and additionally passivated with a yellow chromate coating. For reasons of shipping, 1 m mounting rails are supplied for quantities for up to 10 m.

All non-slotted mounting rails can be provided with fixing holes (please state dimensions b and lz). Additionally, all non-slotted steel rails can be supplied with welded steel bolts (please state dimensions a and the desired bolt).

TS 35 x 7.5  
Steel

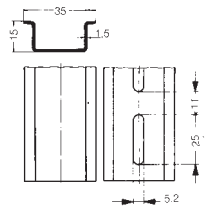
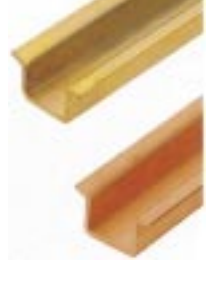
TS 35 x 7.5  
Slotted steel

TS 35 x 7.5  
Aluminium



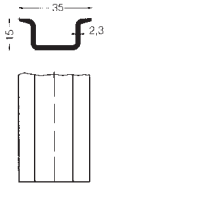
TS 35 x 15  
Steel

TS 35 x 15  
Slotted steel

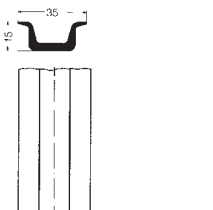


TS 35 x 15/2.3  
Steel

TS 35 x 15/2.3  
Copper



TSK 35 x 15  
PVC



Ordering data	Type	Cat.No.	Qty.	Type	Cat.No.	Qty.	Type	Cat.No.	Qty.	Type	Cat.No.	Qty.
Steel, l = 2 m	TS 35 x 7.5	038340	1	TS 35 x 15	023640	1	TS 35 x 15	049800	1			
Steel, l = 1 m	TS 35 x 7.5	03834-100cm	1	TS 35 x 15	02364-100cm	1	TS 35 x 15	04980-100cm	1			
Slotted steel, l = 2 m	TS 35 x 7.5	067620	1	TS 35 x 15	023650	1						
Slotted steel, l = 1 m	TS 35 x 7.5	06762-100cm	1	TS 35 x 15	02365-100cm	1						
Alu	TS 35 x 7.5	033080	1									
Slotted Alu												
Cu							TS 35 x 15	027010	1			
PVC grey										TSK 35 x 15	051430	1
Technical data	St	AL		St	Cu		St	Cu		PVC		
Material	St 2 plated	AL bare		St 2 plated	St 2 plated		St 2 plated	Cu. bare		PVC		
Standard	DIN EN 50022	DIN EN 50022			DIN EN 50022		DIN EN 50022					
Short-circuit resistance $\geq$ E-Cu conductor	16 $\Omega$	35 $\Omega$		25 $\Omega$	50 $\Omega$		150 $\Omega$					
Max. allowable rated current for PEN function					335 A							
End bracket	EW 35	038356	50	EW 35	038356	50	EW 35	038356	50	EW 35	038356	50
See page 3/4	WEW 35/1	105900	50	WEW 35/1	105900	50	WEW 35/1	105900	50	WEW 35/1	105900	50
	WEW 35/2	106120	50	WEW 35/2	106120	50	WEW 35/2	106120	50	WEW 35/2	106120	50
For TS 32 slotted rail												
Mounting rail support	TSTW 5	017810	10	TSTW 5	017810	10	TSTW 5	017810	10	TSTW 5	017810	10
(M 5 thread)	TSTW 6	016400	10				TSTW 6	016400	10	TSTW 6	016400	10
(M 6 thread)	TST 2	010170	10				TST 2	010170	10	TST 2	010170	10
See page 3/5												
Fixing screw	FKSC M 6x12	035350	50	FKSC M 6x12	035350	50	FKSC M 6x12	035350	50	FKSC M 6x12	035350	50
With hexagon socket for TSTW and TST	FKSC M 6x8	064260	50				FKSC M 6x8	064260	50	FKSC M 6x8	064260	50
	FKSC M 5x8	029590	50	FKSC M 5x8	029590	50	FKSC M 5x8	029590	50	FKSC M 5x8	029590	50
See page 3/5	FM 4	068790	40	FM 4	068790	40	FM 4	068790	40			
Mounting base	Mounting base	064626	20	Mounting base	064626	20						
Steel with M 4 thread												
Polyamide 66 orange												
With M 3 and M 5 thread (Cream)												
With M 6 and M 4 thread (grey) or with M 5 and M 3 (black) see page 3/5												
Support block	SH 2	049492	10	SH 2	049492	10	SH 2	049492	10	SH 2	049492	10
See page 3/15, similar to SH 2 S												
Locking pin												
Locking pin, steel (length as desired)												
Locking pin, brass (length as desired)												