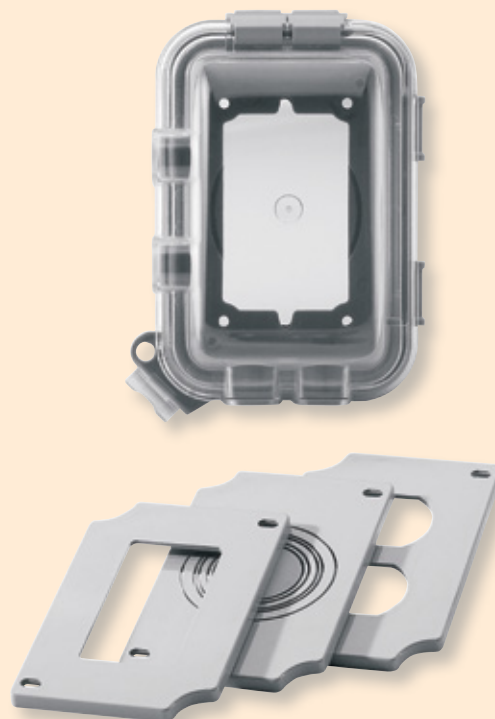


- While-in-use boxes offer complete protection of electrical connections, even when cords are plugged in
- Award-winning design offers superior functionality with patented polycarbonate movable hinges that permit easy horizontal or vertical mounting
- Durable one-piece corrosion resistant polycarbonate cover offers additional strength and weather protection
- Deep, see-through design of cover offers plenty of space for plugs and cords along with easy visual access
- Easy to open/close with a lockable clasp
- Pre-applied gasket makes it easy to mount box properly
- Cord opening fits #12 AWG or lighter cords
- Three easy-to-install molded insets for use with decorator devices, duplex or single receptacles, and toggle switches



Specific weather protective cover solutions for today's needs

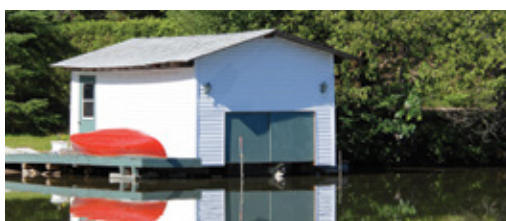


Code compliance

The 2014 NEC® Article 406.9 (B)(1) requires receptacles located outdoors on all dwellings in wet locations to be installed in enclosures that are weatherproof with or without a plug inserted.

See page C-28

Shown:
WIU-1



Weatherproof switch protection

Boat houses and lifts are challenging corrosive environments for switches that need to be protected yet functional. Weather protective switch covers are also lockable for security.

See page C-29

Shown:
S2983



"Protective only" covers

These covers offer "damp location" protection in partially protected outdoor areas such as covered open porches or gazebos and interior areas such as basements or barns.

See page C-29

Shown:
S1962



While-in-use weather protective covers

WeatherBox while-in-use weather protective covers

Product description

1-Gang self-closing
2-Gang self-closing

Design features

- Meets 2014 NEC® 406.9 (B)(1) extra duty requirement for any application (WIU-1X, WIU-2X series only)
- Rugged UV-resistant polycarbonate cover and back protects devices without cracking or breaking and is non-corrosive and non-conductive
- Moveable hinges reposition easily for vertical or horizontal mounting (WIU-1 only)
- 1-Gang box includes 3 inserts for 16 different configurations
- 2-Gang box includes 4 inserts for over 60 different configurations
- Box inserts accommodate decorator devices, duplex receptacles, a variety of different single receptacle sizes and toggle switches
- Exceeds UL outdoor low voltage landscape lighting requirements
- Box cover includes pre-mounted gasket
- Meets Canadian Electrical Code rule 26-702



WIU-1



WIU-1D



WIU-2




WIU-1HX




WIU-2X

Standard depth

Gang	Description	# of available configurations	Color	Catalog no.	
1-Gang	Horizontal/vertical mount	16	GY	□ WIU-1	•
1-Gang	Horizontal/vertical mount	16	W	□ WIU-1W	•
2-Gang	Horizontal/vertical mount	60+	GY	□ WIU-2	•
2-Gang	Horizontal/vertical mount	60+	W	□ WIU-2W	•


cULus Listed to UL514D, file no. E33216, certified to CSA C22.2 no. 42; meets NEMA 3R requirements

Extra depth

Gang	Description	# of available configurations	Color	Catalog no.	
1-Gang	Horizontal/vertical mount	16	GY	□ WIU-1D	•

cULus Listed to UL514D, file no. E33216, certified to CSA C22.2 no. 42; meets NEMA 3R requirements

Extra duty

Gang	Description	Color	Catalog no.	
1-Gang	Horizontal mount	GY	□ WIU-1HX	•
1-Gang	Horizontal mount	W	□ WIU-1WHX	•
1-Gang	Vertical mount	GY	□ WIU-1VX	•
1-Gang	Vertical mount	W	□ WIU-1VWX	•
2-Gang	Horizontal/vertical mount	GY	□ WIU-2X	•
2-Gang	Horizontal/vertical mount	W	□ WIU-2WX	•

WIU-2X & WIU-2WX: cULus Listed to UL514D, file no. E33216; meets NEMA 3R requirements

Color ordering information:

Base device is gray. For white, add Color suffix: W (White)

GY	W
(Gray)	(White)

Compliances, specifications and availability are subject to change without notice.

 RoHS compliant - Page G-21