

Surface Raceway

Pan-Way® Non-Metallic Surface Raceway is available in single-channel and multi-channel versions, providing maximum flexibility for routing, protecting and terminating high-performance copper, fiber optic and power cabling. All single-channel and multi-channel raceways offer a full complement of standard and/or power rated fittings and fully compliant bend radius control fittings to insure maximum cable performance.

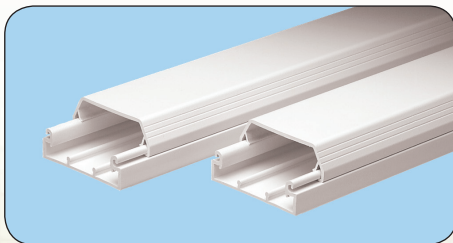
The single-channel raceway includes LD and LDPH which are available in low voltage and/or power rated versions.



LD Raceway includes:

- LDPH is a tamper resistant two-piece latching design supplied with pre-applied adhesive backed tape
- LD features a one-piece single channel design for data routing only
- LD2P10 features one-piece multi-channel design for both power and data applications

The multi-channel raceway includes T-45 and T-70. All multi-channel raceways provide solutions for routing power and data cabling, offer 1 inch bend radius control fittings and accept NEMA standard 70mm faceplates for multiple termination options.



T-45 Raceway includes:

- A multi-directional hinged cover that allows cable installation from either side
- Hinged data and power brackets provide easy access for terminating outlets
- Easily reduces from T-45 to LD10
- Transitions from T-45 to T-70 Raceway



T-70 Raceway includes:

- The Workstation Outlet Center™ Offset Box provides an offset solution to maximize channel capacity and outlet density
- Utilizes snap-in divider wall to provide multi-channel capability
- Can transition to T-45 and LD profile raceways

Panduit® Pan-Way® Surface Raceways are part of the Panduit Enterprise Solution and offer ease of installation, modification and additions for safe and secure routing integration within the Enterprise and Data Center infrastructure at the lowest installed cost.

- A. About Panduit
- B. Copper Systems
- C. Fiber Systems
- D. Faceplates, Outlet Frames & Surface Mount Boxes
- E. Keystone Cabling Systems
- F. Zone Cabling
- G. Cable Routing Systems
- H. Surface Raceway
- J. Cabinets, Racks & Cable Management Systems
- K. Power Management
- L. Grounding & Bonding
- M. Identification Products
- N. Cable Management Accessories
- O. Part Number Index

A.
About
Panduit



Pan-Way® T-45 Raceway Fittings

B.
Copper
Systems



T45CC



T45RA

C.
Fiber
Systems



T45IC

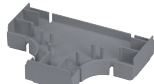


T45OC

D.
Faceplates,
Outlet
Frames &
Surface
Mount Boxes



T45T



T45TD

E.
Keystone
Cabling
Systems



T45EC



T45EE

F.
Zone
Cabling



T45RLD



T45TRI

G.
Cable
Routing
Systems



T45HDB



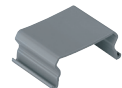
T45HEB

H.
Surface
Raceway

J.
Cabinets,
Racks &
Cable
Management
Systems



T45HEGB



T45WR-X

K.
Power
Management

L.
Grounding
&
Bonding

M.
Identification
Products

N.
Cable
Management
Accessories

O.
Part
Number
Index

Part Number	Part Description	Color	Std. Pkg. Qty.	Std. Ctn. Qty.
T45CCIW-X	Cover coupler fitting. Used to join two pieces of T-45 cover together.	Off White	10	100
T45RAIW	Right angle fitting. Used to join sections of T-45 raceway at 90° flat junction.	Off White	1	10
T45ICIW	Inside corner fitting. Used to join T-45 raceway at inside corner.	Off White	1	10
T45OCIW	Outside corner fitting. Used to join T-45 raceway at 90° outside corner.	Off White	1	10
T45TIW	Tee fitting. Used to join T-45 raceway at tee intersections.	Off White	1	10
T45TD	Divided insert. Used to separate power and data within the T45TIW.	Gray	1	10
T45ECIW	End cap fitting. Used to terminate T-45 raceway.	Off White	1	10
T45EEIW	Entrance end fitting. With knockouts for 1/2", 3/4", 1" and 1 1/4" conduit which allows entry from ceiling or wall.	Off White	1	10
T45RLDIW	Reducer fitting. Reduces from T-45 to LD10 profile raceway.	Off White	1	10
T45TRI	Provides bend radius control at transition from T-70 to T-45 when used with T70TRIW.	Gray	1	10
T45HDBIW	Snap-on hinged data bracket. Used for mounting Panduit® Mini-Com® Modules vertically inline within T-45 raceway. Can be hinged opened on either side of T-45 base.	Off White	1	10
T45HEBIW	Electrical bracket and box. Used for mounting standard duplex electrical outlets.	Off White	1	10
T45HEGBIW	Electrical bracket and box. Used for mounting standard rectangular style electrical outlets.	Off White	1	10
T45WR-X	Wire retainers. Used to hold wires in place during installation.	Gray	10	100
T45WCIW	Offset box. Allows for the mounting of any standard electrical or communication outlet offset from the raceway channel. Box accepts any NEMA standard screw-on faceplate or Pan-Way® Electrical Snap-On Faceplates.	Off White	1	10
T45WC2IW	Offset box. Box accepts any Pan-Way® Communication Snap-On Faceplates.	Off White	1	10

See D-SRSG02--WW-ENG, Surface Raceway Selection Guide or D-SRLC01--WW-ENG, Surface Raceway line card for additional information.