

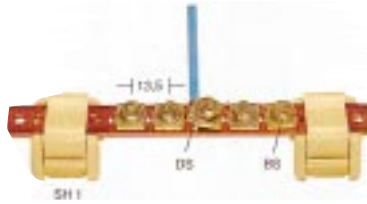
Busbars

In switchgear and control systems, it may be necessary to connect the N and earth conductors at a central point. For this purpose, busbars are available to which numerous conductors can be connected in a limited space (up to 70 wires on a 1m busbar). The conductors are connected via a pressure clamp, no eyeless need to be fitted. A locating flange on the pressure clamp engages in the busbar and holds the clamp firmly in place. Clamping yokes can be moved on the busbar and, therefore, adapted to the installation wiring. The busbar can be used unslotted in any desired length. It is fixed in place with SH support blocks which can also be arranged between the clamping yokes in case of longer busbars.

SSch 10x3 6x6 15x6



NSch 15x2



Current-carrying capacity of the busbars	
A	
SSch 10 x 3 Cu	140
SSch 10 x 3 Ms	100
SSch 15 x 6 Cu	265
SSch 6 x 6 Cu	140
SSch 6 x 6 Ms	100
NSch 15 x 2 Cu	80

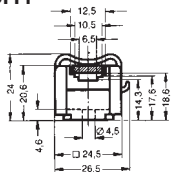
Length 1 m		
Type	Cat.No.	Qty.
SSch	034890	-
Tin-plated Cu, 10x3mm(140A)		
SSch	025980	-
Bare brass,10 x 3 mm (100 A)		
Plated	043800	-
Plated steel 10 x 3 mm		
SSch	057130	-
Tin-plated Cu,6 x 6 mm(140A)		
SSch	057120	-
Bare brass, 6 x 6 mm (100 A)		
SSch	035740	-
Tin-plated Cu,15 x 6 mm(265A)		

Length 1 m		
Type	Cat.No.	Qty.
NSch	028020	-
Bare CU,15 x 2 mm (80 A)		
DS	028010	100
Pressure clamp		
BS M 5 x 8	029670	100
Clamping screw		
Connection data		
Screw connection, solid: 0.5...2.5 mm ² , max. 27 A		
Stripping length: 9 mm		
Cable lug, max.: 16 mm ²		

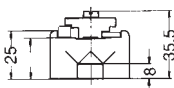
Length 1 m		
Type	Cat.No.	Qty.
ESch	028030	-
Plated steel, Zn. 12 x 2 mm		
DS	028010	100
Pressure clamp		
BS M 5 x 8	029670	100
Clamping screw		
Connection data		
Screw connection, solid: 0.5...2.5 mm ² , max. 27 A		
Stripping length: 9 mm		
Cable lug, max.: 10 mm ²		

Support block

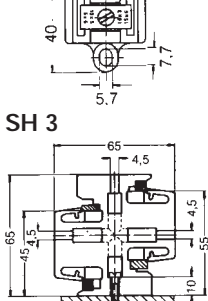
SH1



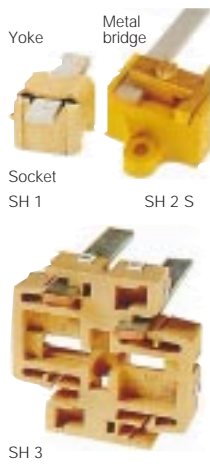
SH 2 S



SH 3

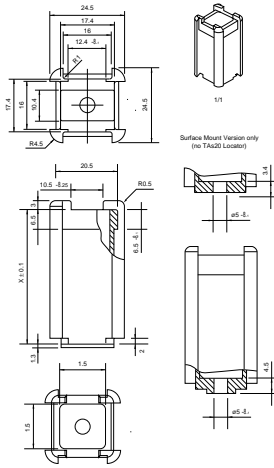


SH 1 SH 3



Type	Cat.No.	Qty.
SH 1 Polyamide cpl.	029986	20
SH 1 Socket	040146	20
SH 1 Yoke	063590	20
for 10 x 3/6 x 6/15 x 2/12 x 2 SH		
Accessories for SH 1 Polyamide:		
BS M 4 x 9	010330	100
Fixing screw for 1 SH 1 unit		
BS M 4 x 30	026710	50
Fixing screw for 2 SH 1 units stacked		
SH 2 S Melamine 064172		
for 10 x 3/6 x 6/15 x 6/10 x 5		
SH 3 Polyamide 055666		
for 10 x 3/6 x 6/10 x 5		

SH 10



Type	Cat.No.	Qty.
SH 10 (50 mm) TS35	980298	20
SH 10 (47 mm) TS32	980296	20
SH 10 (43 mm) TS35	980297	20
SH 10 (29 mm) *	980299	20
* Surface mount		

WEW 35/1



Type	Cat.No.	Qty.
WEW 35/1	105900	50
for 10 x 3/6 x 6		
The assembly picture shows the WEW 35/1 as a busbar support block together with the ZB 4 G clamping yoke.		

WEW 35/2



Type	Cat.No.	Qty.
WEW 35/2	106120	50
for 10 x 3/6 x 6		
The assembly picture shows the WEW 35/2 as a busbar support block together with the ZB 4 G clamping yoke.		