

CGL Form II Class C

Specifications

Description: Current-limiting HRCII-C fuses designed to withstand inrush currents on typical motor start-ups while offering high current limitation in the short-circuit region.

Dimensions: See dimensions illustrations.

Ratings:

Volts: — 600Vac
250Vdc (1-30A)

Amps: — 1-600A

IR: — 200kA
40kA DC

Agency information: CE, CSA Certified, C22.2 No. 106, Class 1422, File 53787.

Features and benefits

- Close sizing to loads allows using smaller and less costly switches
- Provides a higher degree of short-circuit protection
- Helps protect motors against burnout from overloads

Typical applications

- For use in circuits subject to surge currents such as those caused by motors, transformers and other inductive loads

Catalog numbers (-amps)

CGL-1	CGL-40	CGL-175
CGL-2	CGL-45	CGL-200
CGL-3	CGL-50	CGL-225
CGL-4	CGL-60	CGL-250
CGL-6	CGL-70	CGL-300
CGL-10	CGL-80	CGL-350
CGL-15	CGL-90	CGL-400
CGL-20	CGL-100	CGL-450
CGL-25	CGL-110	CGL-500
CGL-30	CGL-125	CGL-600
CGL-35	CGL-150	

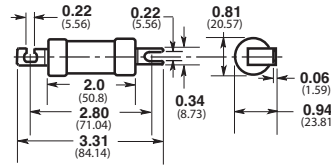
Available Red Spot fuse holders

Fuse amps	Catalog symbol
1-32	RS32
35-60	RS63
70-100	RS100
110-200	RS200
225-400	RS400

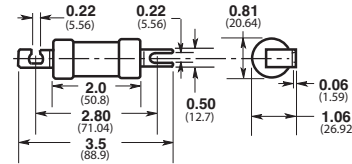
See Red Spot data sheet No. 10083 for details.



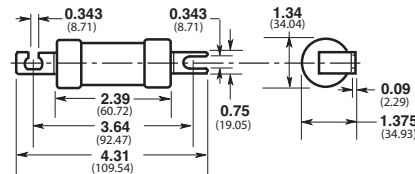
Dimensions - in (mm)



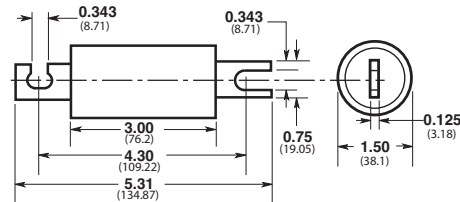
CGL 1-30



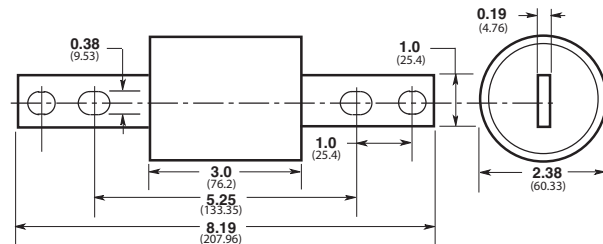
CGL 35-60



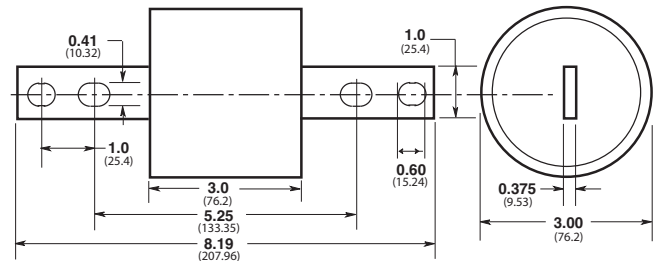
CGL 70-100



CGL 110-200



CGL 225-400



CGL 450-600