

Switching Devices

Safety Switches

Safety Switch Selection Guide

Type	Voltage	Fuse Type		Fuse Class	Ampere Rating	Number of Poles ^③	Enclosure Type		Type 12 ^①	Type 4 Painted Steel	Type 4X Stainless Steel	Type 4X Non Metallic	NEMA 7/9 Hazardous Location
							Type 1	Type 3R					
Air Conditioning Disconnect	Max. 240Vac	Fusible	Cartridge	H	30 and 60	2	—	Yes	—	—	—	—	—
		Non-Fusible	—	—	60	2	—	Yes	—	—	—	—	—
	Max. 240Vac	Moulded Case Switch	—	—	60	2	—	Yes	—	—	—	—	—
	Max. 600Vac	Non-Fusible	—	—	30-80	3	—	Yes	—	—	—	—	—
General Duty	Single Throw	Fusible	Plug	—	30	1 and 2	Yes	Yes	—	—	—	—	—
	Max. 240Vac	Cartridge	H	—	30-600	2 and 3	Yes	Yes	—	—	—	—	—
		Non-Fusible	—	—	30-600	2 and 3	Yes	Yes	—	—	—	—	—
Heavy Duty	Single Throw	Fusible	Cartridge	H	30-600	2, 3, and 4	Yes	Yes	Yes ^{①②}	Yes ^②	Yes ^②	—	—
	Max. 600Vac		L	—	800-1200	Up to 1200A	Yes	Up to 1200A	Up to 1200A	400-1200A	Up to 1200A	—	—
	250 Vdc & 600 Vdc	Non-Fusible	—	—	30-1200	2, 3, and 4	Yes	Yes	Yes ^{①②} Up to 1200A	Yes ^② 400-1200A	Yes ^② Up to 1200A	—	—
6-Pole Motor Circuit^②	Single Throw	Fusible	Cartridge	H	30-200	6	—	Yes	Yes ^{①②}	—	Yes ^②	—	—
	Max. 600Vac	Non-Fusible	—	—	30-200	6	—	Yes	Yes ^{①②}	—	Yes ^②	—	—
Double Throw^③	Max. 600VAV	Fusible	Cartridge	H	30-200	2 and 3	Yes	Yes	Yes ^{①②}	Yes ^②	Yes ^②	—	—
	250Vdc		T (240V)	—	400-1200	3	Yes	Yes	Yes ^{①②}	Yes ^②	400-600A	—	—
		Non-Fusible ^③	—	—	T (600V) 30-1200	2, 3, 4, 6 3	Yes Yes	Yes Yes	Yes ^{①②} Up to 400A	Yes ^② 400-600A	Yes ^② Up to 200A	—	—
Enclosed Rotary Switches	Max. 600Vac	Non-Fusible	—	—	30-80	3			Yes ^①	—	Yes	Yes	—
Hazardous Location Disconnect Switch	Max. 600Vac	Fusible	Cartridge	J	30-100	3			—	—	—	—	Yes
	250Vdc	Non-Fusible	—	—	30-100	3			—	—	—	—	Yes
Enviroline All Stainless^②	Single Throw	Fusible	Cartridge	H	30-400	2 and 3			—	—	Yes ^②	—	—
	Max. 600Vac/DC	Non-Fusible	—	—	30-400	3			—	—	Yes ^②	—	—
Viewing Window	Single Throw	Fusible	Cartridge	H	30-1200	2, 3, 4, 6	—	—	Yes ^①	Yes	Yes	—	—
	Max. 600Vac/DC	Non-Fusible	—	—	30-1200	2, 3, 4, 6	—	—	Yes ^①	Yes	Yes	—	—
Receptacle (Pin & Sleeve)^②	Single Throw	Fusible	Cartridge	H	30-100	3	—	—	Yes ^{①②}	—	Yes ^②	—	—
	Max. 600Vac/DC	Non-Fusible	—	—	60	3	—	—	Yes ^{①②}	—	Yes ^②	—	—
Quick Connect (Cam & Posi Lok)	Single Throw	Fusible	Cartridge	H	100-600	2, 3, and 4	Yes	Yes	—	—	—	—	—
	Max. 600Vac		L	—	800	2, 3, and 4	Yes	Yes	—	—	—	—	—
	Double Throw	Non-Fusible	—	—	100-800	2, 3, and 4	Yes	Yes	—	—	—	—	—
	Max. 600Vac	w Non-Fusible w Fuse	—	—	—	2, 3, and 4	Yes	Yes	—	—	—	—	—
			Cartridge	H	100-200	2, 3, and 4	Yes	Yes	—	—	—	—	—
			T	—	400-800	2, 3, and 4	Yes	Yes	—	—	—	—	—
Solar	Single Throw	Fusible		R	30-600	1 (3)	—	Yes	Yes ^{①②}	Yes ^②	—	—	—
	Max. 600Vdc	Non-Fusible	—	—	30-600	1 (3)	—	Yes	Yes ^{①②}	Yes ^②	—	—	—

Notes

① Type 12 enclosures (30-1200 amperes) can be field modified to meet Type 3R rainproof requirements when a factory provided drain screw is removed.

② Optional windows also available with type 12 or 4/4X enclosures.

③ Double throw non-fusible 4 pole 30-800A, 6 pole 30-100A.

Product Overview

- Used to open or close a circuit
- Non-fusible safety switches provide a means to manually connect or disconnect the load from the source
- Fusible safety switches provide a means to manually open and close a circuit and provide overcurrent protection by means of installed fuses
- Fusible switches certified for use as service entrance equipment (unless noted)
- Also commonly referred to as a disconnect switch or disconnect
- Available from 30–1200A
- All Padlockable
- Horsepower rated
- 100% load break rated (unless noted)
- Non-Fusible switches are 100% continuous duty rated and fusible switches are 80% continuous duty rated per CSA C22.2 No.4

Standards and Certifications

- C22.2 No.4 File #69743
- C22.2 No.14 (Enclosed Rotary) File #162136
- Det Norske Veritas
- ISO 9001:2008
- CSA certified Class I, Div, 1 & 2, Groups B, C & D; Class II, Div 1 & 2, Groups E, G & F; Class III, Div 1 & 2, Zone 1, IIB + H2 for NEMA 7/9.
- Seismic qualified (UBC and CBC) for Heavy Duty 30-800A
- ISO 1400

**Fuse Clips/Class**

Adaptable to Accept the Following Fuse Class

Safety Switch Type	Standard Fuse Class Clips Supplied with Switch	R	J	T
AC Disconnect	H	—	—	—
General Duty	H	30A-600A	400-600A	400-600A
Heavy Duty	H 30-600A L 800-1200A	30A-600A	240V-100-600A 600V-30-600A	200A-800A 1200A
Heavy Duty 6 Pole	H	30A-200A	60A-200A	200A
Double Throw	H 30-200A T 240V-600A-1200A T 600V-400A-800A L 600V-1200A	30A-400A	240V-200A Only 600V-200A-400A	240V-600A-1200A 600V-400A-1200A (Standard)
Enviroline All Stainless & Window	Same as Heavy Duty	Same as Heavy Duty		Same as Heavy Duty
Receptacle (Pin & Sleeve)	H	30A-100A	60A-100A	—
Solar	R	30A - 600A	—	—

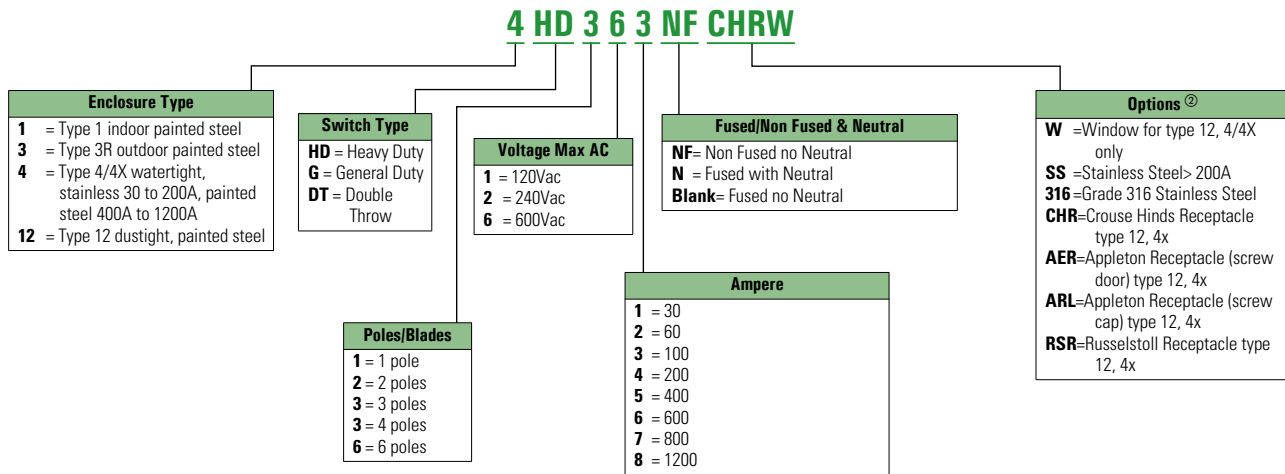
Note: Refer to specific switch technical data page for field adaptation notes.

Switching Devices

Safety Switches

Catalogue Number Selection

Safety Switch

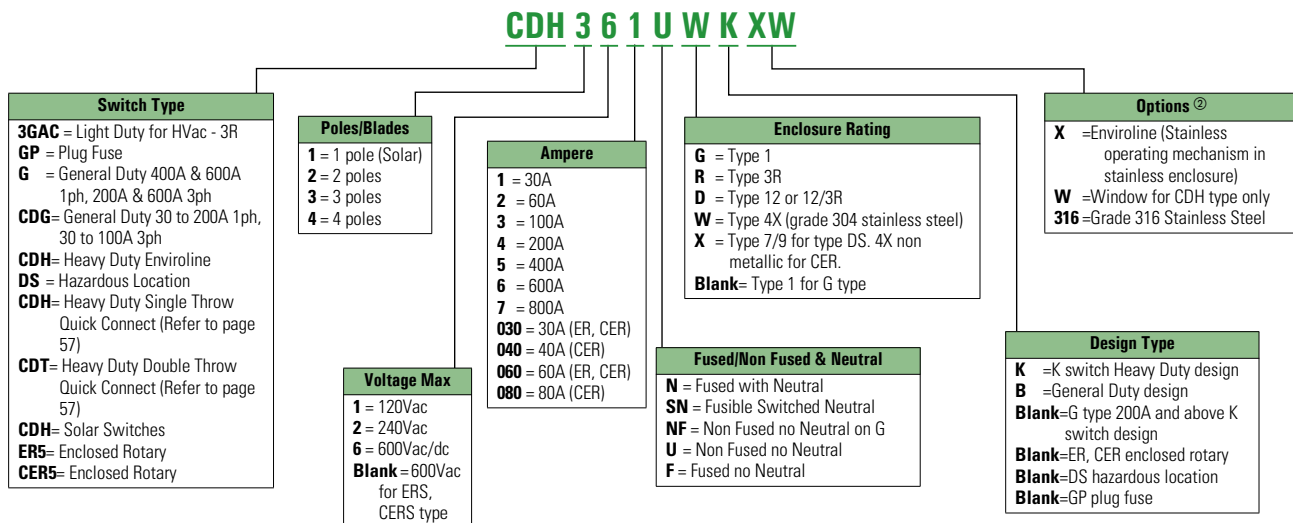


Notes

① Always verify the number of poles and wires required since catalogue numbers may appear in multiple tables.

② See **Pages 12** through **14** for additional Flex Centre options.

This table is intended for use in breaking down existing catalogue numbers. It is not intended for building new catalogue numbers.



Enclosed Rotary Disconnect



NEMA 12/3R, 4X Enclosed Rotary Disconnects

Application

Suitable as a motor disconnect. A compact and economical choice for switching and isolating motor loads. Provides users with the ability to lock directly to wired motor loads in the OFF position.

Environments such as outdoor, corrosive, dust, hose down, all possible with the wide variety of enclosures available.

Product Overview

- Available in 16–80A ratings
- 600 Vac, three- and four-pole non-fusible device
- Up to 65KA RMS short circuit withstand rating
- Padlockable in the OFF position (up to three padlocks)
- Load break rated
- Accepts auxiliary contacts; capability to signal PLC controllers
- Ground lug connection provided as standard
- Possibility of adding one power pole and one auxiliary contact
- NEMA® Type 12/3R painted steel, 4X stainless steel, 4X non metallic, polycarbonate and thermoset polyester (krydon®)
- Labeled "Suitable for motor disconnect"

Contents

Description	Page
Selection Guide	2
Product Overview	3
Catalogue Configurator	4
Options and Accessories	5
Technical Data and Specifications	7
Standard Terminal Capacities	7
Fuse Dimensions	8
Short Circuit Ratings	10
Flex/Satellite Modifications	12
Air Condition Disconnects	15
General Duty Switches	18
Heavy Duty Switches	22
Heavy Duty Six-Pole Switches	32
Heavy Duty Double Throw Switches	35
Enviroline Switches	41
Heavy Duty Window Switches	44
Heavy Duty Receptacle Switches	48
Heavy Duty Voltage Indicator Switches	52
Hazardous Location Switches	54
Heavy Duty Quick Connect Switches	56
Solar Switches	60
Zone Blasting Switches	64
Elevator Control Switches	66
Grounding Switches	68
Enclosed Motor Disconnects	70
NEMA 1 Product Features, Standards, Selection	70
NEMA 12/3R, 4X Product Overview, Standards	71
Product Selection	72
Technical Data and Specifications	73
Pringle Bolted Pressure Switches	78
OEM Operating Mechanisms	85
CSA Enclosure Designations	91

Standards and Certifications

- CSA Certified, File 162136
- C22.2 No.14/UL 508
- Meets CEC rule 28-602(3)(b) suitable for motor disconnect



Product Selection

Enclosed Rotary Non-Fusible

Ampere Rating	Maximum Horsepower Ratings				Type 12 ① Enclosure Dust-Tight/ Rainproof	Type 4X Enclosure Corrosion-Resistant, Stainless Steel	Type 4X Enclosure Corrosion-Resistant, Non-Metallic Krydon®	Type 4X Enclosure Polycarbonate- Non-Metallic
	Three-Phase AC				Catalogue Number	Catalogue Number	Catalogue Number	Catalogue Number
	208V	240V	480V	600V				
Three-Pole, 600 Vac								
16	3	5	10	10	CER53016UD	CER53016UW	CER53016UX	—
25	7-1/2	7-1/2	15	20	CER53025UD	CER53025UW	CER53025UX	—
30	7-1/2	7-1/2	15	20	CER53030UD	CER53030UW	CER53030UX	ER53030UPGB ②③
40	7-1/2	7-1/2	20	25	CER53040UD	CER53040UW	CER53040UX	—
60	15	15	30	30	CER53060UD	CER53060UW	CER53060UX	ER53060UPGB ②③
80	15	20	40	40	CER53080UD	CER53080UW	CER53080UX	—

Accessories for Enclosed Rotary Disconnects ④⑤

Disconnect Ampere Rating	Switched Fourth Pole	Auxiliary Contacts (Choose one)	Terminal Shrouds
16	S4PR516	1NO + 1NC	Single-pole
25	S4PR525	AC1N0NC	TS1R5A
30	S4PR530	2NC	Three-pole
40	S4PR540	AC2NC	TS3R5A
60	—		Single-pole
80	—		TS1R5B
			Three-pole
			TS3R5B

Notes

① NEMA Type 12 enclosures (16–80A) can be field modified to meet Type 3R rainproof requirements when a factory-provided drain hole is opened.

② **GB** suffix = gray cover and black handle, **YR** suffix = yellow cover and red handle, **GR** suffix = gray cover and red handle.

③ cULus.

④ Ordered and shipped as separate components—not integral to enclosed device.

⑤ Enclosed disconnects can accept one power pole, neutral or up to two auxiliary contacts (one mounted on either side of switch).

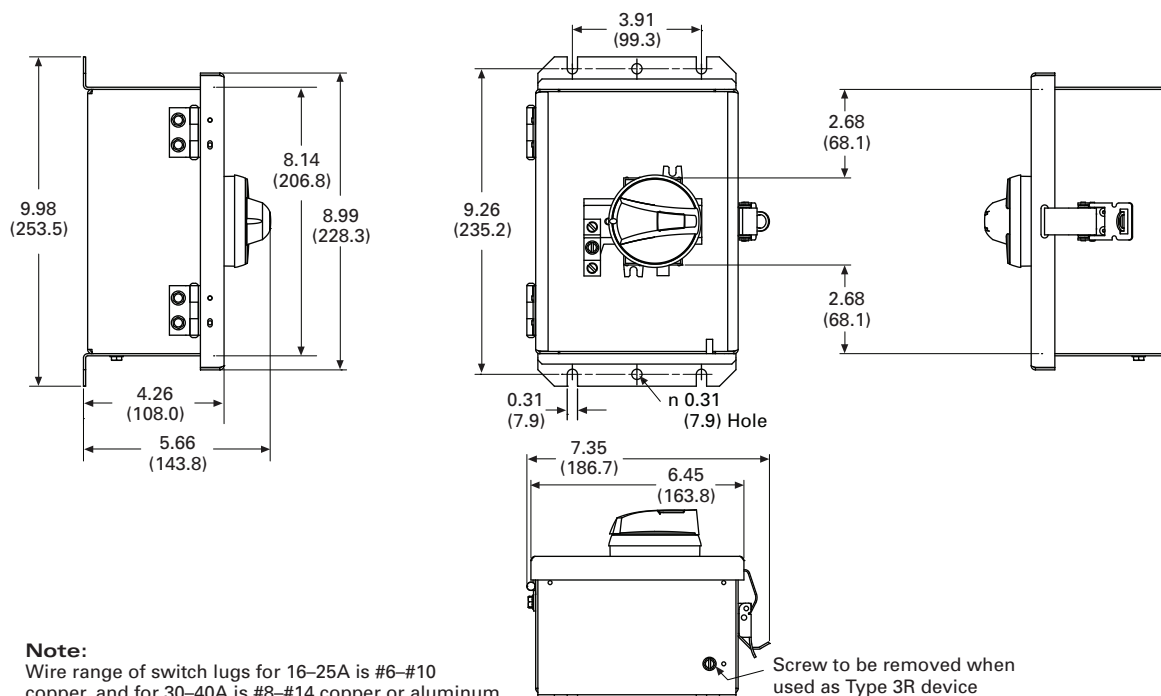
Contact Customer Support (1-800-268-3578) for factory-installed accessories, UL labelled product, or other special modifications.

Switching Devices

Motor Disconnects

Approximate Dimensions in Inches (mm)

NEMA Type 12/3R (16–40A)



NEMA Type 12/3R (60–80A)

