

# Cast Device Boxes

## FS & FD Boxes

### Applications:

Cast device boxes are installed to:

- Accommodate wiring devices
- Act as pull boxes for conductors in a conduit system
- Provide openings to make splices and taps in conductors
- Use indoors and outdoors
- Use in applications where boxes may be subjected to rough use

### Features:

- Green ground screw is located on the flange of the box for easy ground wire termination and is standard on boxes
- Suitable for use in wet locations when used with gasket and flat blank covers
- Mounting lugs standard
- Tapered threaded hubs (NPT) with integral bushing
- Available as shallow (FS) or deep (FD) configuration
- Ample wiring room provided in either FS or FD configuration
- Wide selection of surface or flush covers available in three materials (sheet malleable, steel, aluminum)
- Malleable iron construction provides high tensile strength for strong, dependable service
- Covers are individually bagged and supplied with screws

### Certifications and Compliances:

- cULus
- cCSAus

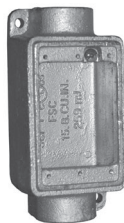
### FS BOXES



FSM1

Cat. #	Size	Unit Qty.	Wt. Lbs. Per 100
FSM1	1/2"	5	222
FSM2	3/4"	5	234
FSM3	1"	5	243

### FSC BOXES



FSCM1

Cat. #	Size	Unit Qty.	Wt. Lbs. Per 100
FSCM1	1/2"	5	234
FSCM2	3/4"	5	241
FSCM3	1"	5	250

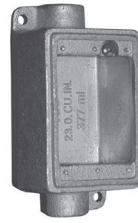
### FD BOXES



FDM1

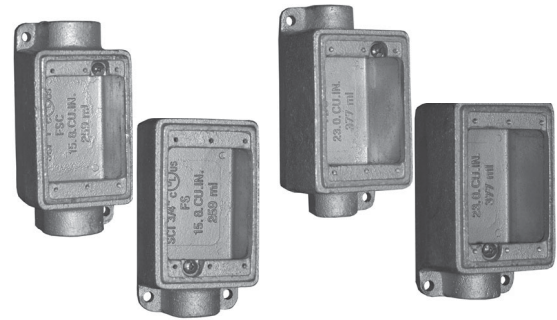
Cat. #	Size	Unit Qty.	Wt. Lbs. Per 100
FDM1	1/2"	2	278
FDM2	3/4"	2	273
FDM3	1"	2	284

### FDC BOXES



FDCM1

Cat. #	Size	Unit Qty.	Wt. Lbs. Per 100
FDCM1	1/2"	2	313
FDCM2	3/4"	2	294
FDCM3	1"	2	306



### Standard Material:

- Malleable iron

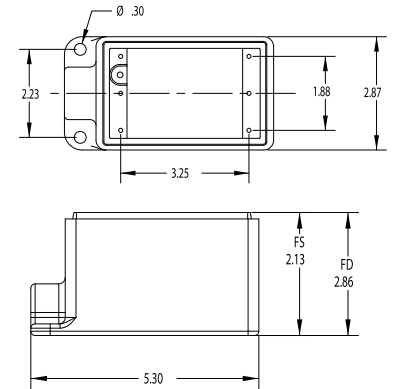
### Standard Finish:

- Malleable iron – zinc electroplate

### Options:

Description	Suffix
• Hot dip galvanized .....	<b>HDG</b>

### FS & FD Dimensions



### FSC & FDC Dimensions

