

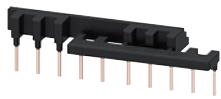
# Power Contactors for Switching Motors

## Accessories and Spare Parts for SIRIUS 3RT2 Contactors and SIRIUS 3RH2 Contactor Relays

### Accessories

Link modules

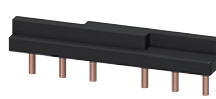
PU (UNIT, SET, M) = 1  
 PS\* = 1 unit (unless otherwise specified)  
 PG = 41B



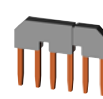
3RA2913-3DA1



3RA2913-3DA2



3RT1933-3D



3RT1916-4BA31



3RT2916-4BA32



3RT1936-4BA31

For contactors	Size	Version	DT	Screw terminals	DT	Spring-type terminals	
Type				Article No.	Price per PU	Article No.	Price per PU
<b>Single wiring modules for making 3 and 4-pole contactor assemblies</b>							
3RT201	<b>S00-S00</b>	Top (in-phase)	PS = 5 units	B	<b>3RA2913-3DA1</b>	B	<b>3RA2913-3DA2</b>
		Bottom (with phase reversal)	PS = 5 units	B	<b>3RA2913-3EA1</b>	B	<b>3RA2913-3EA2</b>
3RT202	<b>S0-S0</b>	Top (in-phase)	PS = 5 units	B	<b>3RA2923-3DA1</b>	B	<b>3RA2923-3DA2</b>
		Bottom (with phase reversal)	PS = 5 units	B	<b>3RA2923-3EA1</b>	B	<b>3RA2923-3EA2</b>
3RT203	<b>S2-S2</b>	Top (in-phase)	PS = 5 units	▶	<b>3RA1933-3D</b>	▶	<b>3RA1933-3D</b>
		Bottom (with phase reversal)	PS = 5 units	▶	<b>3RA1933-3E</b>	▶	<b>3RA1933-3E</b>
<b>Star jumpers (links for paralleling), 3-pole</b>							
3RT201	<b>S00</b>	Without connection terminal		▶	<b>3RT1916-4BA31</b>	A	<b>3RT2916-4BA32</b>
3RT202	<b>S0</b>	(the links for paralleling can be reduced by one pole)		▶	<b>3RT1926-4BA31</b>	A	<b>3RT2926-4BA32</b>
3RT203	<b>S2</b>			▶	<b>3RT1936-4BA31</b>	▶	<b>3RT1936-4BA31</b>



3RA29.2-2H

For contactors	Size	Version	DT	Article No.	Price per PU	PU (UNIT, SET, M)	PS*	PG
Type								
<b>Mechanical interlock assembly kits for two contactors for making 3 and 4-pole contactor assemblies</b>								
<b>Interlock assembly kits for lateral interlocking</b>								
3RT201, 3RT231	<b>S00-S00</b>	• Interlock assembly kits without contactor clearance The connectors comprise a mechanical interlock and two connecting clips.	B	<b>3RA2912-2H</b>		1	10 units	41B
3RT202, 3RT232	<b>S0-S0</b>	• Interlock assembly kits without contactor clearance The connectors comprise a mechanical interlock and two connecting clips.	B	<b>3RA2922-2H</b>		1	10 units	41B
3RT203	<b>S2-S2</b>	• Connectors without contactor clearance for 3-pole design (two connectors are required per assembly)	▶	<b>3RA2932-2C</b>		1	10 units	41B
		• Connectors with 10 mm contactor clearance for 3-pole design (two connectors are required per assembly)	▶	<b>3RA2932-2D</b>		1	10 units	41B
3RT233	<b>S2-S2</b>	• Connectors with 20 mm contactor clearance for 4-pole design (two connectors are required per assembly)	A	<b>3RA2932-2G</b>		1	10 units	41B
3RT203	<b>S2-S2-S0, S2-S2-S2</b>	<b>Mechanical interlocks</b> Note: For size S2, the mechanical interlock must be ordered separately	▶	<b>3RA2934-2B</b>		1	1 unit	41B