

Cam-Lok™ J-series E1017 vulcanized plugs

Product description

Cable size 500 MCM
600V AC/DC, up to 545A continuous
NEMA 4



E1017-9



E1017-61

J-series E1017, rubber, vulcanized crimp connection

Features

- Double cam principle provides a positive, vibration-proof connection
- Self-compensating for wear
- No moving contact surfaces, eliminating arcing or burning
- Superior electromechanical connections
- Locked contacts will withstand a pulling force of 1,000 lbs.
- 1/3 of a turn assures a high pressure contact approaching 600 lbs. per sq. inch providing minimum resistance
- Contacts carefully machined from a high conductivity brass to a smooth sliding fit and easy locking action
- Watertight rubber insulators molded from colorfast material, color-coded for easy phase identification
- Recessed contacts protected by insulating jacket that extends beyond contact ends for safety
- Integrated strain relief system features a retaining wire that prevents cable jacket pull-away and bare conductor exposure
- Plugs feature a high-strength, molded-in-place locking ring to capture and secure the insulator to the contact

Crimp vulcanized male plugs

Cable size	Color	Complete part no.	Contact only part no.	Insulator only part no.
500MCM	BK	E1017-7	A200028-2	A200056-1
	RD	E1017-9	A200028-2	A200056-3
	GR	E1017-11	A200028-2	A200056-5
	WH	E1017-12	A200028-2	A200056-6
	BU	E1017-27	A200028-2	A200056-37
	BRN	E1017-32	A200028-2	A200056-42
	ORG	E1017-10	A200028-2	A200056-4
	YEL	E1017-8	A200028-2	A200056-2

Crimp vulcanized female plugs

Cable size	Color	Complete part no.	Contact only part no.	Insulator only part no.
500MCM	BK	E1017-56	A200027-6	A200040-1
	RD	E1017-58	A200027-6	A200040-3
	GR	E1017-60	A200027-6	A200040-5
	WH	E1017-61	A200027-6	A200040-6
	BU	E1017-75	A200027-6	A200040-39
	BRN	E1017-80	A200027-6	A200040-37
	ORG	E1017-59	A200027-6	A200040-4
	YEL	E1017-57	A200027-6	A200040-2

For E1017 rubber, vulcanized crimp connection drawings, see page F-54
To order single packaged products add a "K" suffix to the complete part number

Color information:

BK (Black), RD (Red), GR (Green), WH (White), BU (Blue), BRN (Brown), ORG (Orange), YEL (Yellow)

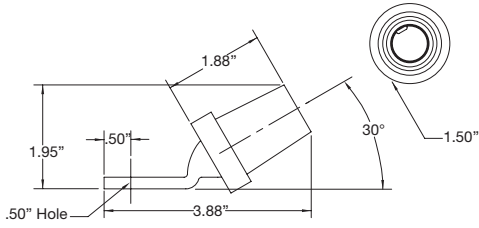


Testing & code compliance: Listed to UL1691, Listed to CSA C22.2, No. 1691-12, CSA certified to C22.2, No. 182.3 LR 13963

Material characteristics: Insulator: Rubber, Environmental: NEMA 4, Temperature rating: Operating ambient: -40° C to 105° C

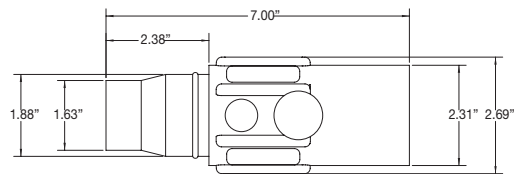
Compliances, specifications and availability are subject to change without notice.

J-series E1016, elastomeric or rubber

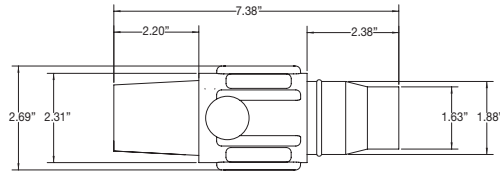


Female angle terminal connector

J-series E1017, rubber, vulcanized & non-vulcanized, double set screw connection

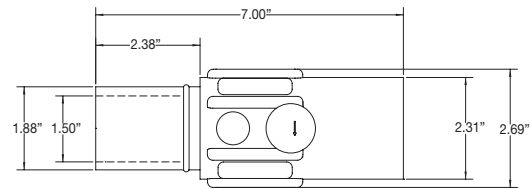


Male connector

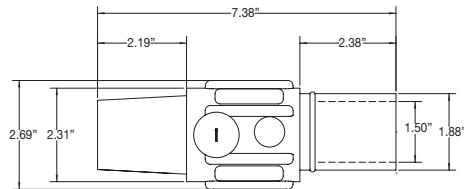


Female connector

J-series E1017, rubber, vulcanized & non-vulcanized crimp connection

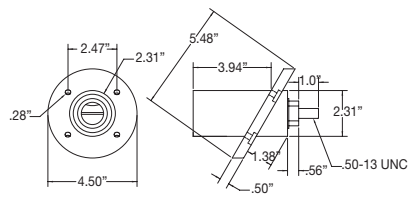


Male connector

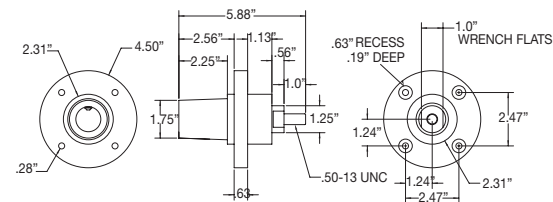


Female connector

J-series E1017, rubber, threaded stud

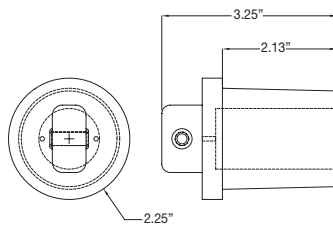
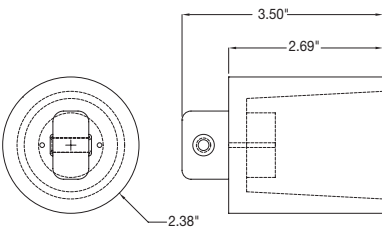


Male receptacle 30° angle



Female receptacle 90° angle

J-series E1017, protective caps



Compliances, specifications and availability are subject to change without notice.