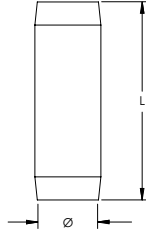




CONNECTORS & POSITIONERS



Threaded Coupler for Copper-Bonded Ground Rod, Sectional



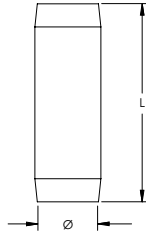
Featured Highlights

- High-strength couplings are threaded and chamfered at both ends for easy driving
- Corrosion-resistant couplings ensure permanent, low resistance copper-to-copper connections



Part Number	Ground Rod Diameter, Nominal	Length	Thread Size	Unit Weight	Certifications
Material: Bronze					
CR12S	9/16"	2.5"	9/16 UNC	0.16 lb	CSA, cULus
CR34	3/4"	3.0"	3/4 UNC	0.34 lb	CSA, cULus
CR58	5/8"	2.4"	5/8 UNC	0.23 lb	CSA, cULus
Material: Silicon Bronze					
CR100	1"	3.9"	1 UNC	0.78 lb	cULus

Threaded Coupler for Stainless Steel Ground Rod, Sectional



Featured Highlights

- Corrosion-resistant couplings ensure permanent, low-resistance connections between ground rods

Material: Stainless Steel 304 (EN 1.4301)



Part Number	Ground Rod Diameter, Nominal	Length	Thread Size	Unit Weight	Certifications
CR34SS	3/4"	3.06"	3/4 UNC	0.40 lb	cULus
CR58CE	5/8"	2.75"	5/8 UNC	0.26 lb	
CR58SS	5/8"	3.06"	5/8 UNC	0.27 lb	cULus