

Device Boxes

Conduit Knockouts



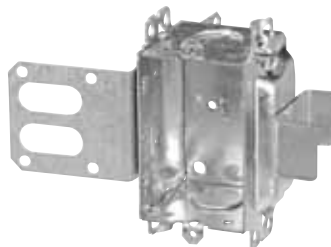
**CI425**  
 "Screwlok" brackets for rework installation. Max. wall thickness: 5/8 in.



**BC1102**  
 Recessed ears.



**CI1102-SB**



**CI3102-SSX**  
 "Wraparound" bracket for 1-5/8 in. steel studs. With integral support bracket.



**BC1104**  
 Recessed ears.



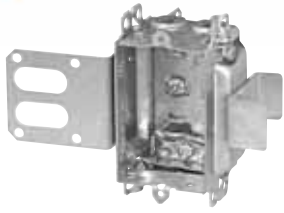
**CI1104-B**



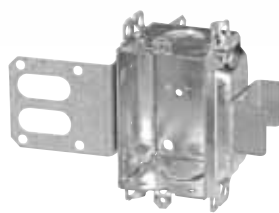
Cat. No.	Volume (Cu. in.)	Features		Knockouts	
		Ears	Bracket	1/2 in. ends	1/2 in. bottom
<b>2 in. Deep — Gangable — 3 in. x 2 in.</b>					
<b>CI425</b>	10.0	flush	rework	2	-
<b>BC1102</b>	10.0	recessed	-	2	-
<b>CI1102-SB</b>	10.0	-	"SB"	2	-
<b>CI3102-SSX</b>	12.0	-	"SSX"	2	-
<b>2-1/2 in. Deep — Gangable — 3 in. x 2 in.</b>					
<b>BC1104</b>	12.5	recessed	-	2	2
<b>CI1104-B</b>	12.5	-	"B"	2	2

Steel Stud Boxes

Device Boxes



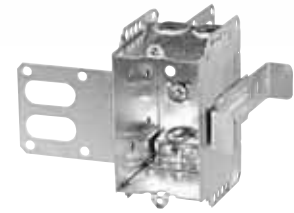
CI3102-LSSAX



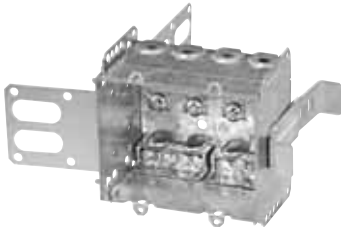
CI3102-SSX



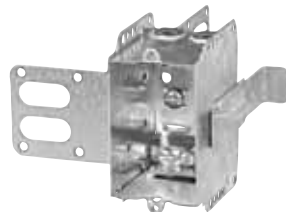
CI1204-3/4-SSX-HV



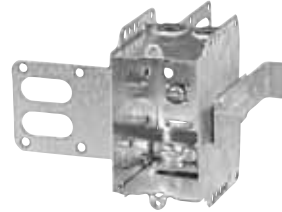
CI2104-LSSAX



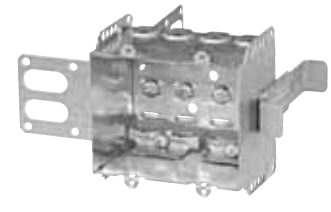
CI2104-LSSA-2X



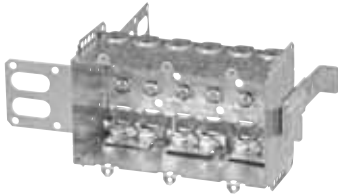
CI2104-LSSX



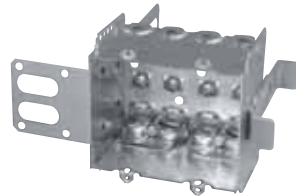
CI2104-LSS1X-1



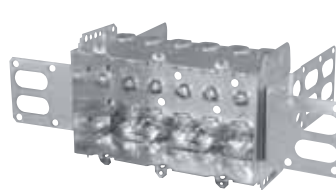
CI2104-LSS2X-1



CI2104-LSS3X-1



CI2104-LSS-2X



CI2104-LSS-3X



CISSX-6



Cat. No.	Volume (Cu. in.)	Width (in.)	Features	Knockouts			Pryouts
			Clamps	1/2 in. ends	1/2 in. bottom	3/4 in. ends	ends
<b>Device Boxes — 2 in. Deep — Gangable — 3 in. High</b>							
CI3102-LSSAX	12.0	2	loomex/BX	-	-	-	4
CI3102-SSX	12.0	2	-	2	-	-	-
<b>Device Boxes — 2-1/2 in. Deep — Pre-Ganged — 3 in. High</b>							
CI1204-3/4-SSX-HV	16.0	2	-	-	-	2	-
CI2104-LSSAX	12.5	2	loomex/BX	-	-	-	4
CI2104-LSSA-2X	25.0	3-3/4	loomex/BX	-	-	-	8
CI2104-LSSA-3X	37.5	5-1/2	loomex/BX	-	-	-	12
CI2104-LSSX	12.5	2	loomex/BX	-	-	-	4
CI2104-LSS1X-1	12.5	2	loomex/BX	-	-	-	4
CI2104-LSS2X-1	25.0	3-3/4	loomex/BX	-	-	-	8
CI2104-LSS3X-1	37.5	5-1/2	loomex/BX	-	-	-	12
CI2104-LSS2X	25.0	3-3/4	loomex/BX	-	-	-	8
CI2104-LSS3X	37.5	5-1/2	loomex/BX	-	-	-	12

Cat. No.	Description
<b>Support Brackets</b>	
CISSX-6	Support bracket extension for 6 in. metal stud