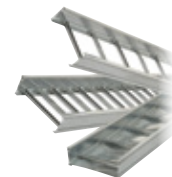


Steel Tray

7" Straight Sections, Series 3-7 — Ladder, Ventilated and Solid Trough



SH 3 7 24 L09 288

Material SP = Pre-Galvanized SH = Hot-Dip Galvanized after Fabrication SS = Stainless Steel 316	Series 3 = Series 3	Side Rail Height 7 = 7"	Width 06 = 6" 09 = 9" 12 = 12" 18 = 18" 24 = 24" 30 = 30" 36 = 36"	Bottom Type L06 = 6" Rung Spacing L09 = 9" Rung Spacing L12 = 12" Rung Spacing V = Ventilated S = Solid Trough	Length 3 = 3m 6 = 6m 144 = 12 ft. 288 = 24 ft.
---	-------------------------------	-----------------------------------	--	--	---

Support Span

SERIES	FEET							
	6	8	10	12	14	16	18	20
SP3-7 Load (lb./ft.)	1333	750	480	333	245	188	148	120
SH3-7 Deflection (in.)	.133	.225	.480	.667	.735	1.125	1.333	1.680
SS3-7 Deflection Factor	.0001	.0003	.001	.002	.003	.006	.009	.014

Specifications

- NEMA Rating — All: 20C
- UL Cross Sectional Area — All: 1.50 in.²
- Side Rail Design Factors, 1 Pair — All: Ix: 10.411 in.⁴; Sx: 2.820 in.³; Area: 1.54 in.²

Fitting Number Selection

SHF 6 24 L VO 90 24

Material SPF = Pre-Galvanized Fittings SHF = Hot-Dip Galvanized Fittings SSF = Stainless Steel 316	Side Rail Depth 3 = 3 3/4" 4 = 4" 5 = 5" 6 = 6" 7 = 7"	Width 06 = 6" 09 = 9" 12 = 12" 18 = 18" 24 = 24" 30 = 30" 36 = 36"	Bottom Type L = Ladder* V = Ventilated** S = Solid Trough***	Fitting Type HB = Horizontal Bend HT = Horizontal Tee HX = Horizontal Cross VI = Vertical Inside Bend VO = Vertical Outside Bend VTD = Vertical Tee Down VTU = Vertical Tee Up HYR = Horizontal Wye Right HYL = Horizontal Wye Left RT = Horizontal Reducing Tee ET = Horizontal Expanding Tee EX = Horiz. Expand Cross HLR = Horizontal Left Reducer HSR = Horizontal Straight Reducer HRR = Horizontal Right Reducer CS = Cable Support Fitting	Angle**** 30 = 30° 45 = 45° 60 = 60° 90 = 90°	Nominal Radius† 12 = 12" 24 = 24" 36 = 36" 48 = 48"
--	--	--	--	--	--	--

* Manufactured with 9" rung spacing measured at the center line of fitting.

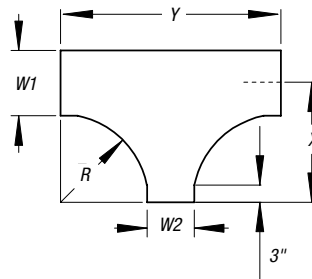
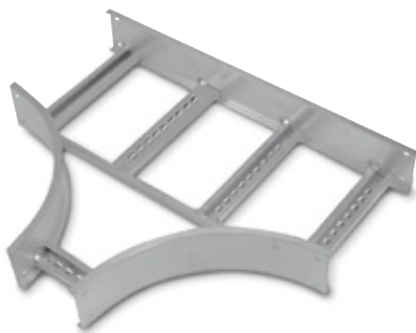
** Manufactured with 4" edge-to-edge rung spacing measured at the center line of fitting.

*** Manufactured with flat sheet inserted under rungs with 9" rung spacing measured at the center line of fitting.

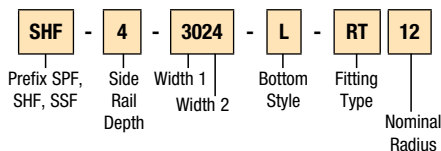
**** Angle is required for HB, VI, VO only.

† Radius is not required for the following Fitting Types: HYR, HYL, HLR, HRR, HSR.

Steel Tray



Catalog Numbering System



Selection Guide

Prefix: SPF (Pre-Galv.), SHF (Hot Dip), SSF (Stainless Steel)

Tray Widths W1: 36, 30, 24, 18, 12, 9

Tray Widths W2: 30, 24, 18, 12, 9, 6

Nominal Radius: 12, 24, 36, 48

Bottom Styles: L – Ladder, V – Ventilated, S – Solid

Side Rail Depth: 3", 4", 5", 6", 7"

Horizontal Reducing Tees

WIDTHS			(+ 12" NOMINAL RADIUS)		(+ 24" NOMINAL RADIUS)		(+ 36" NOMINAL RADIUS)		(+ 48" NOMINAL RADIUS)	
W1	W2	CAT. NO.	X	Y	X	Y	X	Y	X	Y
36	30	PREFIX-(*)-3630-(*)-RT(+)	30	54	42	78	54	102	66	126
	24	PREFIX-(*)-3624-(*)-RT(+)	30	48	42	72	54	96	66	120
	18	PREFIX-(*)-3618-(*)-RT(+)	30	42	42	66	54	90	66	114
	12	PREFIX-(*)-3612-(*)-RT(+)	30	36	42	60	54	84	66	108
	9	PREFIX-(*)-3609-(*)-RT(+)	30	33	42	57	54	81	66	105
	6	PREFIX-(*)-3606-(*)-RT(+)	30	30	42	54	54	78	66	102
30	24	PREFIX-(*)-3024-(*)-RT(+)	27	48	39	72	51	96	63	120
	18	PREFIX-(*)-3018-(*)-RT(+)	27	42	39	66	51	90	63	114
	12	PREFIX-(*)-3012-(*)-RT(+)	27	36	39	60	51	84	63	108
	9	PREFIX-(*)-3009-(*)-RT(+)	27	33	39	57	51	81	63	105
	6	PREFIX-(*)-3006-(*)-RT(+)	27	30	39	54	51	78	63	102
24	18	PREFIX-(*)-2418-(*)-RT(+)	24	42	36	66	48	90	60	114
	12	PREFIX-(*)-2412-(*)-RT(+)	24	36	36	60	48	84	60	108
	9	PREFIX-(*)-2409-(*)-RT(+)	24	33	36	57	48	81	60	105
	6	PREFIX-(*)-2406-(*)-RT(+)	24	30	36	54	48	78	60	102
18	12	PREFIX-(*)-1812-(*)-RT(+)	21	36	33	60	45	84	57	108
	9	PREFIX-(*)-1809-(*)-RT(+)	21	33	33	57	45	81	57	105
	6	PREFIX-(*)-1806-(*)-RT(+)	21	30	33	54	45	78	57	102
12	9	PREFIX-(*)-1209-(*)-RT(+)	18	33	30	57	42	81	54	105
	6	PREFIX-(*)-1206-(*)-RT(+)	18	30	30	54	42	78	54	102
9	6	PREFIX-(*)-0906-(*)-RT(+)	16½	30	28½	54	40½	78	52½	102

(*) Insert side rail depth. (*) Insert bottom style to complete Catalog Number. (+) Insert radius (12"–48"). Includes two pairs of splice plates with hardware.