

1 100 Ampere Meter Sockets

Shallow Enclosure

Product Specifications

- ◆ Available with or without a factory installed hub.
- ◆ Tunnel type line and load lugs (#6 - 1/0AWG Cu).
- ◆ CSA Approved for Copper conductors only.
- ◆ 4 Jaw configuration standard, optional 5th jaw available for 6 or 9 o'clock position mounting (See page 20).
- ◆ For applications requiring an insulated neutral a field installable kit is available (See page 19).

Product Selection

Table 1. 100A 600VAC Maximum Shallow Enclosure Meter Socket

Catalogue Number	Service Entrance	Enclosure Rating	Hub	Knockouts (quantity & type)			Weight lbs (kg)	Dimensions in (mm)
				Sides	Bottom	Back		
S1-N1-1/4	Overhead	Type 3R	Factory Installed 1-1/4"	(1) C	(2) B (1) D	(1) C	5 (2.3)	9 x 7-3/8 x 3-1/2 (228.6 x 187.3 x 88.9)
S12-N1-1/4			Factory Installed (2) 1-1/4"					
S1-N			Single Hub Opening with Plate					
S12-N			Two Hub Openings with Plates					
S11-N		Type 1	Single Concentric (1", 1-1/4", 1-1/2") Knockout					

Table 2. Conduit Knockout Legend

Knockout Code ^①	Conduit Knockout Sizes
B	1/2", 1", 1-1/4"
C	1", 1-1/4"
D	1", 1-1/4", 1-1/2"

Table 3. Lug Cable Capacities

Location	Cable Size (Cu)
Line	#6-1/0
Load	
Neutral	

^① To determine knockout locations and quantity refer to knockouts column in table 1 and location map below.

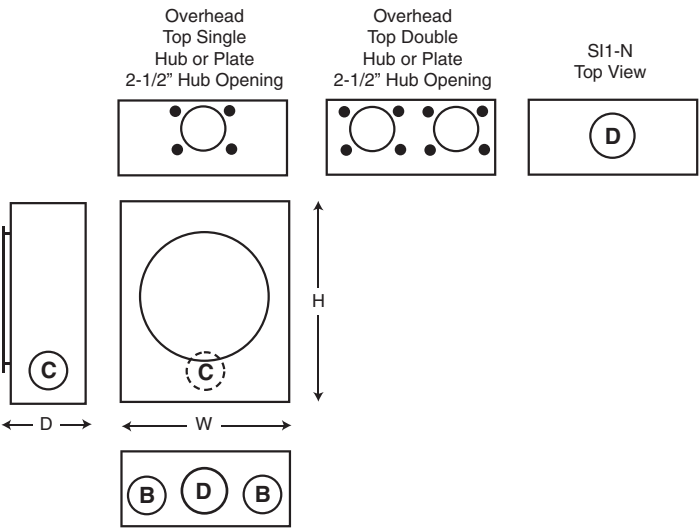
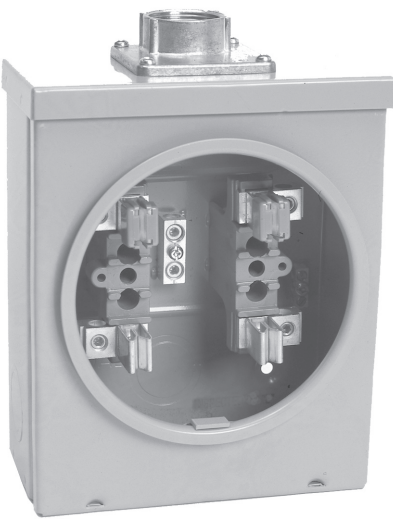


Figure 1. 100A Shallow Meter Socket Knockout Location Map



S1-N1-1/4

King Size Enclosure

Product Specifications

- ◆ Available with or without a factory installed hub.
- ◆ Tunnel type line and load lugs (#6 - 1/0AWG Cu/Al).
- ◆ Type 3R enclosure rating.
- ◆ CSA approved for copper or aluminum wiring.
- ◆ 4 Jaw configuration standard, optional 5th jaw available for 6 or 9 o'clock position mounting (See page 20).
- ◆ For applications requiring an insulated neutral a field installable kit is available (See page 19).
- ◆ K1MW2-N Features two factory installed 30A, 240V flat rate water heater lugs.

Product Selection

Table 4. 100A 600VAC Maximum King Enclosure Size Meter Socket

Catalogue Number	Service Entrance	Enclosure Rating	Hub	Factory Installed Water Heater Lugs	Knockouts (quantity & type)			Weight lbs (kg)	Dimensions in (mm)				
					Sides	Bottom	Back						
K1-N	Overhead	Type 3R	Single Hub Opening with Plate	—	(1) E	(1) A (1) E	(1) E	9 (4)	13-5/8 x 7-3/8 x 4-5/16 (346.1 x 187.3 x 109.5)				
K1-N1-1/4			Factory Installed 1-1/4"	—		(1) A (2) E							
K1M-N	Overhead / Underground		Single Hub Opening with Plate	—									
K1MW2-N			Single Hub Opening with Plate	Yes ①									
KU1N	Underground		Solid Steel Top	—									

Table 5. Conduit Knockout Legend

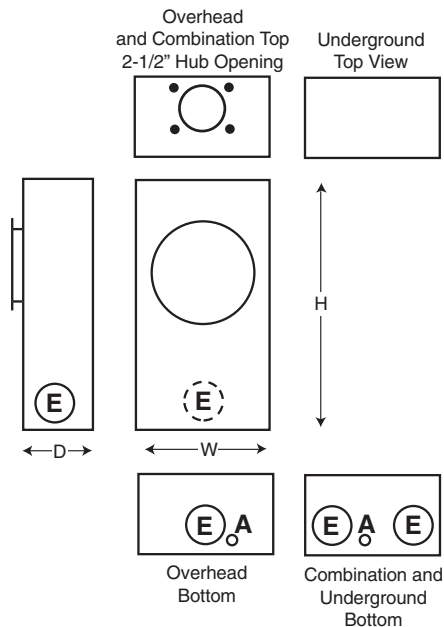
Knockout Code ②	Conduit Knockout Sizes
A	1/2"
E	1", 1-1/4", 1-1/2", 2"

Table 6. Lug Cable Capacities

Location	Cable Size (Cu/Al)
Line	#6-1/0
Load	
Neutral	

① Factory installed flat rate water heater lugs accommodate 1/0 - #12AWG Al or 1/0 - #14AWG Cu cables.

② To determine knockout locations and quantity refer to knockouts column in table 3 and location map below.



K1M-N

Figure 2. 100A King Size Meter Socket Knockout Location Map