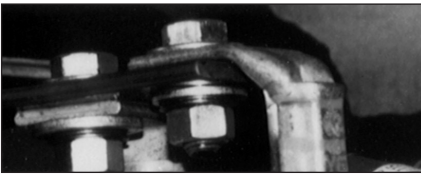
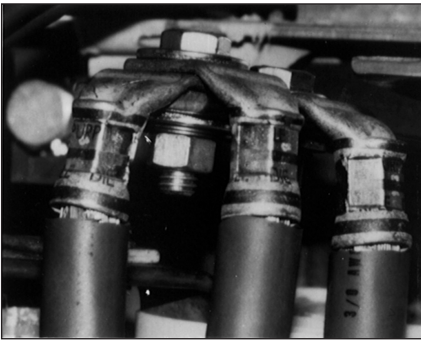
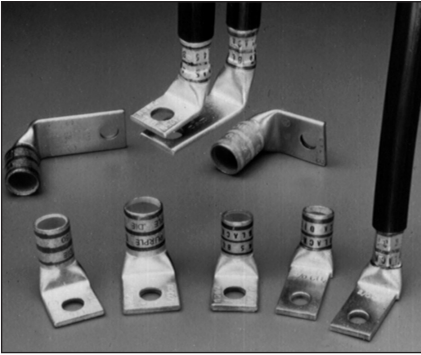


Color-Keyed®

Color-Keyed® Connectors



Color-Keyed® Special Lugs for Special Problems – Angled, Shaped and Trimmed the Way You Often Need Them

Thomas & Betts can solve your difficult wire bending and terminating problems in confined power distribution panels, switchgear and motor control enclosures.

We have the design and production capability to deliver exactly the type lug you need, shaped the way you need.

- Straight, 45° and 90° angle
- Stacking or non-stacking
- Narrow tongue or standard
- Tin, silver, lead, nickel

Thomas & Betts offers an extensive line of copper Color-Keyed® lugs for #8 AWG through 1000 kcmil flex and code cables. The lug tongues are modified in several different configurations to meet your exact needs: 45° and 90° bend angles, narrow tongues to fit into circuit breakers, offset tongues to stack two cables, and special stud hole drilling. These special configurations let you:

- (1) run cable directly to the bus bar with no bending,
- (2) terminate into very narrow spaces, and
- (3) utilize minimal bus bar space.

The specially designed lugs help you “clean up” your cabling in crowded enclosures.

The photographs show some examples of how and where the lugs can be used.

Customized Color-Keyed® Connectors for Copper Cables

- Standard and special tongue angles, stacking and non-stacking, bolt holes sizes and centers, protective platings.
- Specially modified one and two hole copper Color-Keyed® compression lugs, Series 54100, 54200, 54850BE and 54930BE for flex and code copper stranded cables. Material high conductivity wrought copper.
- Minimum order quantity: Standard package quantity by cable size. Consult factory for price and delivery. All customized lugs are made to order. A.R.O. Non-cancellable.

Color-Keyed®

Color-Keyed® Connectors

Order From

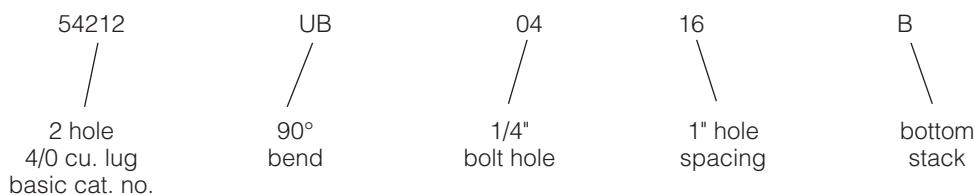
Catalog No. _____ Qty. _____
 (For 54100, 54200, 54800 & 54900 Series Copper Lugs Only)

Design Controls and Requirements

All "MADE-UP" catalog numbers start with a standard or basic catalog number and are followed by the customer required extra features: tongue shape, bolt hole size, distance between bolt holes, stacking, plating and inspection hole (peep hole). A code letter or a number has been assigned to each extra feature. See CODE TABLE.

- NOTES: 1) Lack of any of the extra features on the "MADE-UP" catalog number means that the standard Cat. No. features are prevalent.
 2) If either bolt hole size or distance between bolt holes needs to be changed from standard Cat. No., both code numbers will appear on the "MADE-UP" Cat. No. (See example below)

Cat. No. 54212UB0416BSP



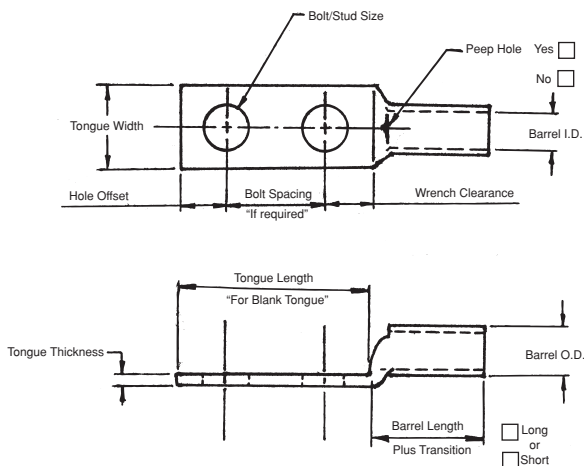
CODE TABLE

Tongue Shape		Bolt Holes		Bolt Hole Centers		Stacking		Finish (Plating)		Inspection Hole (Long Barrel)		Inspection Hole (Short Barrel)		
Type	Code	Size .020	Code	Distance .015	Code	Type	Code	Type 1	Code	I.D.	Code	I.D.	Code	
45°	UF	#8	.173	02	1/2"	08	Top	T**	Silver Plate	SP	Peep Hole	PH	Blind End	BE
90°	UB	#10	.204	03	5/8"	10	Bottom	B	Lead Plate	LP				
Blank	BT	1/4"	.281	04	3/4"	12			Nickel Plate	NP				
(No Bolt Hole)		5/16"	.344	05	7/8"	14			Plain Finish	PF				
		3/8"	.406	06	1"	16			Not QTP if suffix other					
		1/2"	.531	08	1 1/8"	18			than - PF or standard					
		5/8"	.656	10	1 1/4"	20			tin plate					
		3/4"	.812	12	1 3/8"	22								
		7/8"	.937	14	1 1/2"	24								
		1"	1.062	16	1 5/8"	26								
					1 3/4"	28								
					*1 7/8"	30								
					*2"	32								

* These bolt centers not available for bolt holes larger than 1 3/16".

** Not required for 45° & 90° Top Stacking.

Cable	Code <input type="checkbox"/>
	Weld <input type="checkbox"/>
<input type="checkbox"/> #8	<input type="checkbox"/> #6
<input type="checkbox"/> #2	<input type="checkbox"/> #1
<input type="checkbox"/> 2/0	<input type="checkbox"/> 3/0
<input type="checkbox"/> 4/0	<input type="checkbox"/> 250 kcmil & up (Code Only)



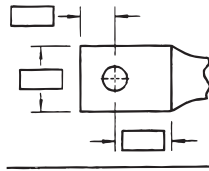
Color-Keyed®

Color-Keyed® Connectors

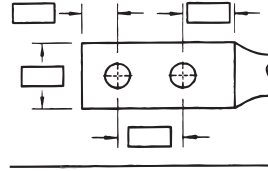
Tongue Specifications – See Chart “A” For Dimensions

Stud Sizes

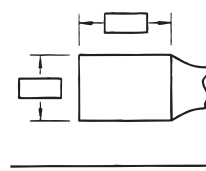
- #8 1/2
- #10 5/8
- 1/4 3/4
- 5/16 7/8
- 3/8 1



Single Hole



Double Hole



Blank

Chart A

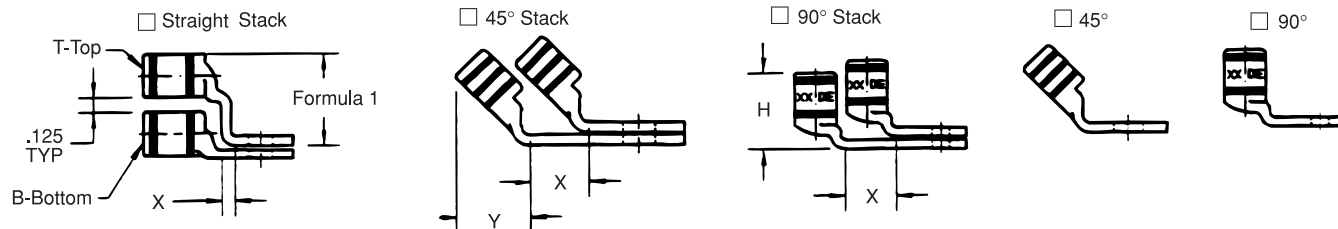
Nominal Bolt Hole Size .015	Hole Offset .030	Wrench Clearance Min.	Tongue Width Cable Size										
			#8 Code #8 Weld	#6 Code #6 Weld	#4 Code #4 Weld	#2 Code #2 Weld	#1 Code #1 Weld	1/0 Code 1/0 Weld	2/0 Code 2/0 Weld	3/0 Code 3/0 Weld	4/0 Code 4/0 Weld	250 Code	
#8	.173	.200	.240	.406	.437	.562	.593	.672	.750	.825	.937	1.030	1.125
#10	.204	.218	.250	.406	.437	.562	.593	.672	.750	.825	.937	1.030	1.125
1/4	.281	.250	.312	.469	.500	.562	.593	.672	.750	.825	.937	1.030	1.125
5/16	.344	.375	.406	.562	.562	.562	.675	.672	.750	.825	.937	1.030	1.125
3/8	.406	.375	.440	.578	.578	.594	.675	.672	.750	.825	.937	1.030	1.125
1/2	.531	.500	.562	–	–	–	.750	.750	.750	.825	.937	1.030	1.125
5/8	.656	.812	.875	–	–	–	–	–	–	–	.937	1.030	1.125
3/4	.812	.750	.770	–	–	–	–	–	–	–	–	–	–
*7/8	.937	.875	.890	–	–	–	–	–	–	–	–	–	–
*1	1.062	.937	1.000	–	–	–	–	–	–	–	–	–	–

* These bolt holes available in one hole lug only.

Chart B

Cable Size	Tongue Thickness	Straight Lug Barrel Length Plus Transition		Barrel		Dim “X” Stacked Lugs			Dim “Y”		Dim “H”	
		Short	Long	O.D.	I.D.	Straight	45°	90°	Short	Long	Short	Long
		#8	.080	.635	.935	.260	.180	.158	.478	.394	.595	.808
#6	.081	.675	.975	.296	.215	.134	.544	.432	.587	.799	.767	1.067
#4	.099	.685	.985	.365	.266	.175	.622	.502	.637	.849	.838	1.138
#2	.108	.815	1.115	.410	.302	.216	.649	.535	.711	.923	.958	1.258
#1	.106	.825	1.275	.467	.361	.212	.731	.592	.710	1.028	.956	1.406
1/0	.125	.975	1.325	.571	.396	.250	.789	.646	.794	1.042	1.075	1.425
2/0	.125	.965	1.315	.571	.446	.250	.859	.696	.829	1.077	1.125	1.475
3/0	.125	1.085	1.435	.632	.507	.250	.946	.757	.900	1.148	1.225	1.575
4/0	.137	1.255	1.705	.701	.564	.274	1.031	.826	1.015	1.333	1.387	1.837
250	.137	1.375	1.925	.766	.629	.274	1.123	.891	1.085	1.474	1.487	2.037
300	.153	1.900	2.675	.850	.660	.459	1.226	.975	1.180	1.726	1.924	2.679
350	.177	2.090	2.896	.926	.720	.531	1.333	1.103	1.267	1.830	2.096	2.896
400	.173	2.460	2.980	.960	.757	.519	1.370	1.085	1.551	1.913	2.484	2.984
500	.218	2.670	3.610	1.100	.852	.654	1.514	1.225	1.629	2.266	2.669	3.619
600	.244	2.900	3.490	1.200	.926	.732	1.630	1.325	1.762	2.147	2.897	3.497
700	.228	2.784	–	1.255	.997	.684	1.662	1.375	1.780	–	3.011	–
750	.270	3.050	3.925	1.330	1.030	.810	1.745	1.455	1.827	2.434	3.050	3.925
800	.266	3.213	–	1.375	1.079	.800	1.728	1.625	1.952	2.787	3.213	4.554
900	.313	3.450	4.550	1.500	1.145	.940	1.900	1.650	2.065	–	1.387	–
1000	.297	3.356	4.500	1.550	1.203	.890	2.070	1.675	2.031	2.787	1.487	4.506

Note: Stacking lugs are available for one bolt only.
 Consult Factory: Straight: 700 kcmil & up
 45°: 400 kcmil & up
 90°: 500 kcmil & up



Formula 1 = (.125 + 2 (OD) + .037 – Tongue Thickness)

Chart C

Bolt Hole Size	Tongue Width .030 Code Cable Size										
	300 kcmil 4/0 Weld	350 kcmil	400 kcmil	500 kcmil 4/0 Weld	600 kcmil 5/0 Weld	1325/24	700 kcmil	750 kcmil	800 kcmil	900 kcmil	1000 kcmil
#8	–	–	–	–	–	–	–	–	–	–	–
#10	–	–	–	–	–	–	–	–	–	–	–
1/4	1.250	1.355	1.410	1.605	1.745	1.805	1.840	1.935	2.010	2.180	2.265
5/16	1.250	1.355	1.410	1.605	1.745	1.805	1.840	1.935	2.010	2.180	2.265
3/8	1.250	1.355	1.410	1.605	1.745	1.805	1.840	1.935	2.010	2.180	2.265
1/2	1.250	1.355	1.410	1.605	1.745	1.805	1.840	1.935	2.010	2.180	2.265
5/8	1.250	1.355	1.410	1.605	1.745	1.805	1.840	1.935	2.010	2.180	2.265
3/4	1.250	1.355	1.410	1.605	1.745	1.805	1.840	1.935	2.010	2.180	2.265
*7/8	–	–	–	1.605	1.745	1.805	1.840	1.935	2.010	2.180	2.265
*1	–	–	–	–	1.745	1.805	1.840	1.935	2.010	2.180	2.265

Color-Keyed®

Connectors for Copper Conductor

Two Hole Lugs - Long Barrel 600V to 35KV (continued)

Material: High Conductivity Wrought Copper
Finish: Electro Tin Plate



COMPRESSION

Cat. No.	Wire Size		Bolt Size	Dimensions (in.)								Die Code	Die Color
	Code	Flex		A	B	C	D	E	F	H			
54814BE	2/0 AWG		1/4	2.62	1.25	.83	.13	.57	1/4	5/8	45	BLACK	
256-30695-1299	2/0 AWG	275/24 = 111 kcmil	1/4	2.69	1.31	.81	.13	.57	1/4	3/4	45	BLACK	
256-30695-1116	2/0 AWG		3/8	3.19	1.81	.83	.13	.57	3/8	1	45	BLACK	
256-30695-1116P	2/0 AWG	1/0 Weld	3/8	3.19	1.81	.83	.13	.57	3/8	1	45	BLACK	
54862BE	2/0 AWG		1/2	4.20	2.81	.83	.13	.57	1/2	1 1/4	45	BLACK	
54815BE	3/0 AWG		1/4	2.89	1.45	.92	.13	.63	1/4	3/4	50	ORANGE	
54816BE	3/0 AWG	325/24 = 131 kcmil	3/8	3.25	1.63	.92	.13	.63	3/8	1	50	ORANGE	
54864BE	3/0 AWG		1/2	4.48	3.00	.94	.13	.63	1/2	1 1/4	50	ORANGE	
54817BE	4/0 AWG		1/4	3.15	1.38	1.03	.14	.70	1/4	3/4	54	PURPLE	
54818BE	4/0 AWG		3/8	4.38	2.63	1.03	.14	.70	3/8	1 1/4	54	PURPLE	
256-30695-1117	4/0 AWG	450/24 = 182 kcmil	3/8	3.35	1.81	1.03	.14	.70	3/8	1	54	PURPLE	
256-30695-1117P	4/0 AWG	3/0 Weld	3/8	3.50	1.88	1.03	.14	.70	3/8	1	54	PURPLE	
54866BE	4/0 AWG		1/2	4.70	3.00	1.03	.14	.70	1/2	1 1/4	54	PURPLE	
256-30695-1245	250 kcmil		3/8	3.83	1.93	1.13	.14	.77	3/8	1	62	YELLOW	
256-30695-1245P	250 kcmil	550/24 = 222 kcmil,	3/8	3.83	1.93	1.13	.14	.77	3/8	1	62	YELLOW	
54868BE	250 kcmil	4/0 Weld	1/2	4.92	3.00	1.13	.14	.77	1/2	1 1/4	62	YELLOW	
54819BE	300 kcmil		3/8	5.04	2.80	1.25	.15	.85	3/8	1	66	WHITE	
54870BE	300 kcmil		1/2	5.23	3.00	1.25	.15	.85	1/2	1 1/4	66	WHITE	
54820BE	350 kcmil		1/4	4.29	1.93	1.36	.18	.93	1/4	3/4	71	RED	
256-30695-1118	350 kcmil		3/8	4.33	1.93	1.36	.18	.93	3/8	1	71	RED	
256-30695-1118P	350 kcmil	650/24 = 262 kcmil	3/8	4.33	1.93	1.36	.18	.93	3/8	1	71	RED	
54872BE	350 kcmil		3/8	5.40	3.00	1.36	.18	.93	1/2	1 1/4	71	RED	
54822BE	400 kcmil		1/4	4.38	1.93	1.41	.17	.96	1/4	3/4	76	BLUE	
54821BE	400 kcmil		3/8	4.43	1.93	1.41	.17	.96	3/8	1	76	BLUE	
54874BE	400 kcmil	775/24 = 313 kcmil	1/2	5.51	3.00	1.41	.17	.96	1/2	1 1/4	76	BLUE	
54823BE	500 kcmil		1/4	4.93	1.94	1.61	.22	1.10	1/4	3/4	87	BROWN	
256-30695-1119	500 kcmil		3/8	5.00	1.93	1.61	.22	1.10	3/8	1	87	BROWN	
256-30695-1119P	500 kcmil	925/24 = 373 kcmil	3/8	5.00	1.93	1.61	.22	1.10	3/8	1	87	BROWN	
54876BE	500 kcmil		1/2	6.00	3.00	1.61	.22	1.10	1/2	1 1/4	87	BROWN	
54824BE	600 kcmil		3/8	5.70	2.80	1.75	.24	1.20	3/8	1	94	GREEN	
54878BE	600 kcmil	1100/24 = 444 kcmil	1/2	5.83	3.00	1.75	.24	1.20	1/2	1 1/4	94	GREEN	
256-30695-1222	750 kcmil		3/8	5.25	2.06	1.94	.27	1.33	1/2	1	106	BLACK	
256-30695-1222P	750 kcmil	1325/24 = 535 kcmil	3/8	5.25	2.06	1.94	.27	1.33	1/2	1	106	BLACK	
54880BE	750 kcmil		1/2	6.20	3.00	1.94	.27	1.33	1/2	1 1/4	106	BLACK	
58884BE		1600/24 = 646 kcmil	1/2	6.16	3.00	1.94	.27	1.33	1/2	1 1/4	106	BLACK	
58826BE	900 kcmil	1925/24 = 777 kcmil	1/2	6.74	3.00	2.18	.31	1.50	1/2	1 1/4	115	YELLOW	
54826BE	1000 kcmil		3/8	6.49	2.80	2.27	.30	1.55	3/8	1	125	N/A	
54882BE	1000 kcmil		1/2	6.66	3.00	2.27	.30	1.55	3/8	1 1/4	125	N/A	

Tooling: Pg. 79-100
Die Selector Chart: Pg. 105-109

