

Power terminal blocks: stud and splicer

162, 163 and 165

Specifications

Description: Power stud terminal blocks.

Construction: Molded black thermoplastic.

Poles: 1-, 2- or 3-poles.

Wire range: See catalog numbers table.

Ratings:

Volts: — 600Vac/dc

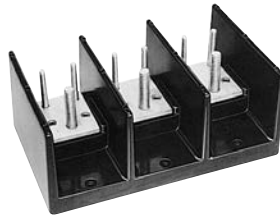
Amps: — Up to 760A

SCCR: — 10kA per UL 508A table SB4.1 (except where noted)

Agency information: CE, Guide XCFR2, UL E62622
General Industrial Class per UL 1059; CSA Class 6228-01, File 53787.

Flammability rating:

UL 94V0.



160, 162, 163 and 165

Specifications

Description: Power splicer terminal blocks.

Construction: Molded black thermoplastic.

Wire range: See catalog numbers table.

Poles: Series 160: 2-, 3- or 4-poles

Series 162, 163 and 165: 1-, 2- or 3-poles

Ratings:

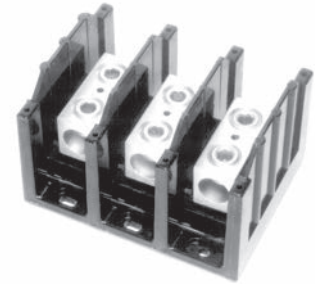
Volts: — 600Vac/dc

Amps: — Up to 760A

SCCR: — 10kA per UL 508A table SB4.1 (except for select products noted in table)

Agency information: CE, Guide XCFR2, UL E62622
General Industrial Class per UL 1059; CSA Class 6228-01, File 53787.

Flammability rating: UL 94V0.



Stud block catalog numbers

Catalog numbers	Line connection (poles)	Load connection (poles)	Material and ampacity	Connector agency information
Connector to stud				
16280*	2/0-#14Cu-Al	¼-20 X ¾ Stud	Al-175A	UL —
16281	2/0-#14Cu-Al	¼-20 Tapped hole	Al-175A	UL —
16378	500kcmil-#6Cu-Al	(2)¼-20 x 1 Stud	Al-380A	UL CSA
16383	500kcmil-#6Cu-Al	(1)¼-16 x 1 Stud	Al-380A	UL CSA
16582	(2)500kcmil-#6Cu-Al	(2)¼-16 x 1 ½ Stud	Al-760A	UL CSA
Stud to stud				
16290	¼-20 x ¾ Stud	¼-20 x ¾ Stud	Cu-175A	UL —
16390	¾-16 x 1 ½ Stud	¾-16 x 1 ½ Stud	Cu-250A	UL CSA
16392†	¾-16 x 1 ½ Stud	¾-16 x 1 ½ Stud	Cu-400A	UL CSA
16394	½-13 x 1 ½ Stud	½-13 x 1 ½ Stud	Cu-400A	UL CSA
16395	¾-16 x 1 ½ Stud	(2)¾-20 x ¾ Stud	Cu-310A	UL CSA
16591	¾-16 x 1 ½ Stud	(2)¾-16 x 1 ½ Stud	Cu-400A	UL CSA
16593**	½-13 X 1 Stud	½-13 X 1 Stud	Cu-600A	UL CSA

Nuts are not supplied with blocks

*SCCR up to 200kA

** 1-Pole not available

† Hardware included on studs; part number structure = 16392-#-H

How to order

Catalog number + # of poles

Example: 16000 – 3 (complete part number)

Optional covers:

160: CPB160 - (pole)

162: CPB162 - (pole)

163: CPDB - (pole)

165: CPDB165 (1 for each pole) - new style
CPB165 - (pole) - old style

For short-circuit current rated stud power distribution blocks, go to the PDB and 162 and 163 with high SCCR.

Data Sheets: 1117 (162, 165); 1148 (163)

Catalog numbers

Catalog numbers	Line connection	Load connection	Connector material and ampacity	Agency information
16000*	2/0-#8Cu/Al	2/0-#8Cu/Al	Al-175A	UL
16003*	250kcmil-#6Cu Only	250kcmil-#6Cu Only	Cu-255A	UL
16005*	350kcmil-#6Cu/Al	350kcmil-#6Cu/Al	Al-310A	UL
16200	#2-#14Cu, #2-#8Al	#2-#14Cu, #2-#8Al	Al-115A	UL
16201	1/0-#14Cu Only	1/0-#14Cu Only	Cu-150A	UL
16204**	2/0-#8Cu/Al	2/0-#8Cu/Al	Al-175A	UL
16301	250kcmil-#6Cu Only	250kcmil-#6Cu Only	Cu-255A	UL/CSA
16303	350kcmil-#6Cu/Al	350kcmil-#6Cu/Al	Al-310A	UL/CSA
16306	500kcmil-#6Cu/Al	500kcmil-#6Cu/Al	Al-380A	UL/CSA
16500	(2)350kcmil-#4Cu/Al	(2)350kcmil-#4Cu/Al	Al-620A	UL/CSA
16504	(2)500kcmil-#6Cu/Al	(2)500kcmil-#6Cu/Al	Al-760A	UL/CSA

*160 bases have mounting holes outside the barriers. Other bases (162 through 165) have mounting holes within barriers. See Data Sheet for dimensional drawings.

**SCCR up to 200kA

How to order

Catalog number + # of poles

Example: 16000 – 3 (complete part number)

Optional covers:

160: CPB160 - (pole)

162: CPB162 - (pole)

163: CPDB - (pole)

165: CPDB165 (1 for each pole) - new style
CPB165 - (pole) - old style

For short-circuit current rated and/or finger-safe splicer blocks, go to the PDBFS, PDB or 162 and 163 with high SCCR.

Data Sheets: 1117 (160, 162, 165); 1148 (163)