

Intended Use

The sleek design of the D-Series Size 2 Flood reflects the embedded High-performance LED technology. It is ideal for larger signage, facade and flagpole lighting in many commercial and residential applications.

Features

- Designed to replace up to a 250W MH luminaire while saving up to 80% in energy
- LEDs deliver an expected service life of more than 100,000 hours and eliminate frequent lamp changes associated with traditional sources

- Ultra-efficient light engines allow the luminaire to deliver efficacies of over 90 LPW
- Precision engineered optics deliver superior field-to-beam ratios and greater on-target illumination
- Mechanical design enhances thermal management and allows for a broader range of aiming flexibility

Listings

CSA Certified to U.S. and Canadian standards. Luminaire is IP65 rated. Rated for 0-40°C minimum ambient. DesignLights Consortium® qualified product.

D-SERIES FLOOD SIZE 2

LED Flood Luminaire

**ORDERING INFORMATION**

Specifications subject to change.

Example: DSXF2 LED 4 A530/40K MSP MVOLT THK DDBXD

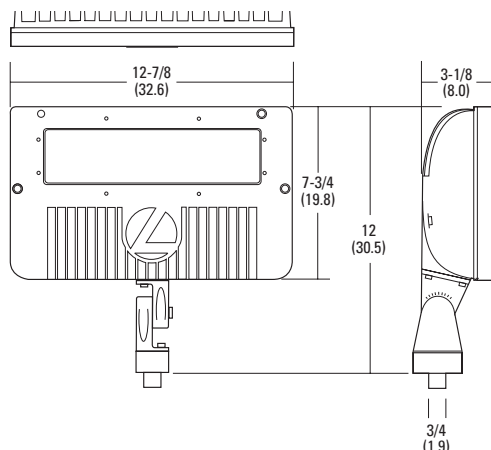
Series	Light engines	Performance package	Distribution	Voltage	Mounting
DSXF2 LED	3 Three COB engines ¹	530 mA options:	NSP Narrow spot	MVOLT ¹	<u>Shipped included</u>
	4 Four COB engines	A530/30K 3000K	MSP Medium spot	120 ²	THK Knuckle with 1/2" NPS threaded pipe
		A530/40K 4000K	MFL Medium flood	208 ²	YKC62 Yoke with 16-3 SO card
		A530/50K 5000K	FL Flood	240 ²	<u>Shipped separately³</u>
			WFL Wide flood	277 ²	DSXF1/2TS Tenon slipfitter (2-3/8" O.D. THK required)
			WFR Wide flood, rectangular	347	FTS CG6 Yoke with 16-3 SO card
			HMF Horizontal flood	480	
Options		Finish	Accessories: Order Separately		
<u>Shipped installed</u>		<u>Shipped separately²</u>	DDBXD Dark bronze	DSXF1/2TS DDBXD U Slipfitter for 1-1/4" to 2-3/8" OD tenons; mates with 1/2" threaded knuckle (specify finish)	FSPB DDBXD U Steel square pole bracket, 2-3/8" OD tenon (specify finish)
PE Photocontrol, button type ⁴	UBV Upper/bottom visor (universal)	DBLXD Black			DSXF1UBV DDBXD U Upper/bottom visor accessory (specify finish)
DMG 0-10V dimming driver (no controls) ⁵	FV Full visor	DNAXD Natural aluminum	FTS CG6 DDBXD U Slipfitter for 2-3/8" to 2-7/8" OD tenons; mates with yoke mount (specify finish)		DSXF2FV DDBXD U Full visor accessory (specify finish)
SF Single fuse (120, 277V, 347) ⁶	VG Vandal guard	DWHXD White			DSXF2VG U Vandal guard accessory
DF Double fuse (208, 240, 480V) ⁶			FRWB DDBXD U Radius wall bracket, 2-3/8" OD tenon (specify finish)		For more mounting options, visit our Floodlighting Accessories pages.

ADDITIONAL INFORMATION

For additional product information, visit www.lithonia.com.

SPECIFICATIONS

EPA	DEPTH	WIDTH	HEIGHT	OVERALL HEIGHT	WEIGHT
0.8 ft ² (0.5 m ²)	3-1/8" (8.0 cm)	12-7/8" (32.6 cm)	7-3/4" (19.8 cm)	12" (30.5 cm)	10.5 lbs (4.8 kg)



Drawings are for dimensional detail only and may not represent actual mechanical configuration. Dimensions are shown in inches (centimeters) unless otherwise noted.

Stock configurations are offered for shorter lead times:

Standard Part Number	Stock Part Number
DSXF2 LED 3 A530/40K WFL MVOLT THK DDBXD	DSXF2 LED 3 40K
DSXF1 LED 1 A530/50K WFL MVOLT THK DDBXD	DSXF2 LED 3 50K
DSXF2 LED 4 A530/40K WFL MVOLT THK DDBXD	DSXF2 LED 4 40K
DSXF2 LED 4 A530/50K WFL MVOLT THK DDBXD	DSXF2 LED 2 50K

Notes

- Not available with 347V or 480V.
- MVOLT driver operates on any line voltage from 120-277V. Specify 120, 208, 240 or 277 options only when ordering with fusing (SF, DF options) or photocontrol (PE).
- Also available as separate accessories; see Accessories information.
- Photocontrol (PE) requires 120, 208, 240, 277 or 347 voltage option.
- Not available with three-engine product (DSXF2 LED 3).
- Single fuse (SF) requires 120, 277 or 347 voltage option. Double fuse (DF) requires 208, 240 or 480 voltage option.