

A.
About
Panduit



Pan-Way® T-45 Raceway Fittings

B.
Copper
Systems



T45CC



T45RA

C.
Fiber
Systems

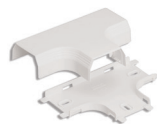


T45IC

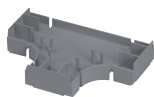


T45OC

D.
Faceplates,
Outlet
Frames &
Surface
Mount Boxes



T45T



T45TD

E.
Keystone
Cabling
Systems



T45EC



T45EE

F.
Zone
Cabling



T45RLD



T45TRI

G.
Cable
Routing
Systems



T45HDB



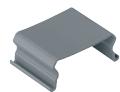
T45HEB

H.
Surface
Raceway

J.
Cabinets,
Racks &
Cable
Management
Systems



T45HEGB



T45WR-X

K.
Power
Management

L.
Grounding
&
Bonding

M.
Identification
Products

N.
Cable
Management
Accessories

O.
Part
Number
Index

Part Number	Part Description	Color	Std. Pkg. Qty.	Std. Ctn. Qty.
T45CCIW-X	Cover coupler fitting. Used to join two pieces of T-45 cover together.	Off White	10	100
T45RAIW	Right angle fitting. Used to join sections of T-45 raceway at 90° flat junction.	Off White	1	10
T45ICIW	Inside corner fitting. Used to join T-45 raceway at inside corner.	Off White	1	10
T45OCIW	Outside corner fitting. Used to join T-45 raceway at 90° outside corner.	Off White	1	10
T45TIW	Tee fitting. Used to join T-45 raceway at tee intersections.	Off White	1	10
T45TD	Divided insert. Used to separate power and data within the T45TIW.	Gray	1	10
T45ECIW	End cap fitting. Used to terminate T-45 raceway.	Off White	1	10
T45EEIW	Entrance end fitting. With knockouts for 1/2", 3/4", 1" and 1 1/4" conduit which allows entry from ceiling or wall.	Off White	1	10
T45RLDIW	Reducer fitting. Reduces from T-45 to LD10 profile raceway.	Off White	1	10
T45TRI	Provides bend radius control at transition from T-70 to T-45 when used with T70TRIW.	Gray	1	10
T45HDBIW	Snap-on hinged data bracket. Used for mounting Panduit® Mini-Com® Modules vertically inline within T-45 raceway. Can be hinged opened on either side of T-45 base.	Off White	1	10
T45HEBIW	Electrical bracket and box. Used for mounting standard duplex electrical outlets.	Off White	1	10
T45HEGBIW	Electrical bracket and box. Used for mounting standard rectangular style electrical outlets.	Off White	1	10
T45WR-X	Wire retainers. Used to hold wires in place during installation.	Gray	10	100
T45WCIW	Offset box. Allows for the mounting of any standard electrical or communication outlet offset from the raceway channel. Box accepts any NEMA standard screw-on faceplate or Pan-Way® Electrical Snap-On Faceplates.	Off White	1	10
T45WC2IW	Offset box. Box accepts any Pan-Way® Communication Snap-On Faceplates.	Off White	1	10

See D-SRSG02--WW-ENG, Surface Raceway Selection Guide or D-SRLC01--WW-ENG, Surface Raceway line card for additional information.