

Valve Tags

BradyID.com/s34

Valve Identification

Valve tags help relay important pipe content information, valve identification or operation information at the point of need. Some stock valve tag options, like our brass valve tags and energy source tags, are available with preset legends. All of our tags are available for customization or as blanks so you may stamp or print your own tag text or legends.



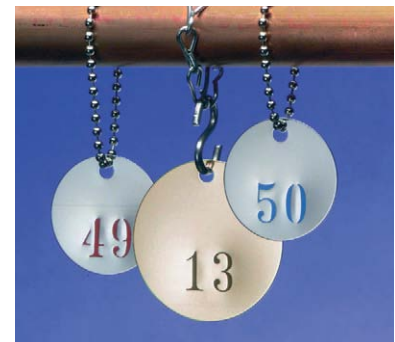
ASME A13.1

Recommends the use of a permanently legible tag for identification of materials in pipes less than 3/4" (19mm) in diameter.

Valve Tag Material Descriptions


Characteristic	HIGH PERFORMANCE				GENERAL PURPOSE					
	HEET Tag B-748	Teflon B-541	Fiberglass B-120	Plastic Tag B-418	Brass B-907	Aluminum B-906	Stainless Steel B-919	3-Ply Engraved B-1	Polyester B-851	Polyurethane B-462
Plant Environment										
Indoor	Good	Good	Good	Good	Good	Good	Good	Good	Good	Good
Avg. Outdoor Durability (yrs)	5-7	Up to 10	15	5-7**	3-6	Up to 2	5-7	5-8	3-5	5-7
Surface Abrasion Resistance	Good	Good	Good	Good	Good	Good	Good	Good	Fair	Good
Temperatures										
Upper Limit	248°F (120°)	500°F (260°C)	193°F (89°C)	260°F (127°C)	233°F (113°C)	233°F (113°C)	1500°F (815°C)	193°F (89°C)	212°F (100°C)	250°F (121°C)
Lower Limit	-40°F (40°C)	-40°F (40°C)	-40°F (40°C)	-40°F (40°C)	-40°F (40°C)	-40°F (40°C)	-40°F (40°C)	-40°F (40°C)	-40°F (40°C)	-40°F (40°C)
Chemical Resistance										
Organic Solvents (MEK, Acetone, Toluene)	Not Rec.	Good	Not Rec.	Not Rec.	Not Rec.	Not Rec.	Good	Not Rec.	Not Rec.	Not Rec.
Acids (Sulfuric, HCl, Acetic)	Good	Not Rec.	Not Rec.	Good	Not Rec.	Not Rec.	Not Rec.	Not Rec.	Good	Good
Alkali (Sodium Hydroxide)	Not Rec.	Not Rec.	Not Rec.	Good	Not Rec.	Not Rec.	Not Rec.	Good	Good	Good
Alcohols (Methanol, Isopropanol)	Not Rec.	Good	Good	Good	Good	Not Rec.	Good	Good	Good	Good
Grease/Oils (SAE 20, ASTM#3)	Good	Good	Good	Good	Good	Good	Good	Good	Good	Good
Special Properties										
Bar Coding Available	Yes	Yes	No	Yes	No	No	No	No	Yes	No
Protective Covering Available	Yes	No	No	Yes	No	No	No	No	Yes	No

** Includes Tedlar Overlaminate Not Rec. = Not Recommended



Custom Valve Tags

Brady offers a wide variety of customizable valve tags to meet your needs and the harsh environments through your facility. View the available tag types, then contact Brady Customer Service to order your custom tags today.



Contact Brady Customer Service to order your custom tags today.



HEET Tags (B-748)

- Features overlaminated polyester which permanently bonds graphics to a stainless steel baseplate
- Custom text and graphics can all be included at no extra cost.
- Optional protective tag covers are available to assure readability even when covered with paint.
- Custom text one or both sides
- Sizes: 2"x2" or 2-1/2"x5"
- Available colors: yellow, red, green, blue or white



Durable Rigid Plastic Tags (B-418)

- Colorful Plastic Tag has recessed area on both sides to apply printed label.
- Non-corrosive, lightweight, non-conductive and impact resistant
- Two sizes available: 1-1/2" x 3" or 2-1/2" x 4" label area
- Overlaminated choices include standard or UV resistant for durability
- Tags can be purchased individually
- Available colors: black, yellow, red, blue, green, orange, white, grey, brown & tan



Teflon Coated Aluminum Tags (B-541)

- Anodized aluminum printed with black text and coated with Teflon®; resisting corrosion, paint, chemicals and sunlight
- Legends, bar codes and human readable text available with variable print
- Fixed custom message, warning or logo may be added to all tags
- 1-1/2"x1-1/2" or 1"x3" Custom sizes are also available



Stamped and Engraved Brass Tags (B-907)

- 19 gauge cartridge brass (40 mils thick) for general purpose valve identification.
- Available in 1-1/2" and 2" round, square, triangle, octagon/hexagon shapes.
- Available colors (natural or black-filled). All tags are produced Natural unless specifically requested. Black-filled legend is recommended for maximum legibility.
- Stamping or engraving options available



Fiberglass Tags (B-120)

- Graphics are embedded within a fiberglass/resin package in order to withstand moisture, grease, and dirt
- Standard colors are yellow and white
- Ability to add barcodes and multiple lines
- 2"x2" or 4"x4" Custom sizes and colors available



Stamped and Engraved Aluminum Tags (B-906)

- Durable 19 gauge aluminum tags
- Type 3003-H14 material has been anodized, dyed, and sealed.
- Available in round or square shapes in either 1-1/2" or 2" sizes.
- Available colors (natural or black-filled). All tags are produced Natural unless specifically requested. Black-filled legend is recommended for maximum legibility.
- Stamping, engraving or etching options available



Custom Valve Tags

BradyID.com/s34

Custom Valve Tags (continued)



STAINLESS STEEL (B-919)

- Durable .025" stainless steel tags.
- Pre-stamped tags may be black filled for easier readability.
- Equipment tags (which may include a bar code) are surface coated with ink and then engraved.
- Available in round or square shapes in either 1-1/2" or 2" sizes.
- Withstands temperatures of 2700° F
- Stamping, engraving or etching options available



01-43400-003
HIGH STAGE COMPRESSOR NO. 3

10-631-220B
FUME BLOWER

3-PLY ENGRAVED (B-1)

- A 1/16" rigid laminate plastic is heat resistant, non-conductive, non-corroding.
- Tag text engraved through a colored cap sheet to a contrasting colored base sheet
- Multiple background colors available
- Round sizes: 1-1/2" or 2"
- Square sizes: 0.75"x2.5", 1"x2.5", 1"x3", 2"x3", 1.5"x4", 2"x4"
- Hole size: 3/16"



POLYESTER (B-851)

- Grommets heavy duty polyester tags withstand moisture, grease and dirt.
- Rigid polyester surface exceeds OSHA 50 lb. pull out requirement
- Polyester tags withstand moisture, grease and dirt
- Standard colors include red, yellow, blue, green and white
- Ability to add barcodes and multiple lines

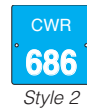


Polyurethane Valve Tags (B-462)

- Chemical and oil resistant; ideal for harsh environments
- Made of multi-purpose polyurethane that is heat stamped with the numbering or lettering of your choice.



Style 1: Tag size 3/4" x 2-5/8".
Four 1/2" Characters making 1 line of text.



Style 2: Tag size 3" x 3".
Five 1/2" Characters making 3 lines of text, or three 1" Characters making 2 lines



Style 3: Tag size 2-3/16" x 2".
Four 1/2" Characters making in 1 line of text.



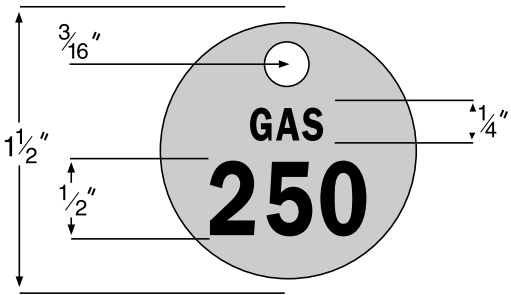
Style 4: Tag size 3" x 3-3/8".
Five 1/2" Characters making 3 lines of text, or three 1" Characters 2 lines of text.



Contact Brady Customer Service to order custom valve tags in any of the durable materials shown here.

Stamped Brass Valve Tags (B-907)

- 1-1/2" diameter stamped valve tags
- Constructed from 19 gauge cartridge brass (40 mils thick)
- Black filled text for easy readability
- 1/4" Top Legend, 1/2" Number Sequence
- Standard package: 25 tags (one each of sequence)



Contact Brady Customer Service to customize these tags for your facility.

Top Line Copy	1-25	26-50	51-75	76-100	101-125	126-150	151-175	176-200	201-225	226-250	251-275	276-300	301-325	326-350	351-375	376-400	401-425	426-450	451-475	476-500
(Blank)	23200	23201	23202	23203	23204	23205	23206	23207	23208	23209	23617	23618	23619	23620	23621	23622	23623	23624	23625	23626
AC	23272	23273	23274	23275	23480	23481	23482	23483	23484	23485	23486	23487	23488	23489	23490	23491	23492	23493	23494	23495
CA	87460	87461	87462	87463	87464	87465	87466	87467	87468	87469	87470	87471	87472	87473	87474	87475	87476	87477	87478	87479
CHW	23516	23517	23518	23519	23520	23521	23522	23523	23524	23525	23526	23527	23528	23529	23530	23531	23532	23533	23534	23535
CHWR	23596	23597	23598	23599	23600	23601	23602	23603	23604	23605	23606	23607	23608	23609	-	-	-	-	-	-
CHWS	23576	23577	23578	23579	23580	23581	23582	23583	23584	23585	23586	23587	23588	23589	-	-	-	-	-	-
COND	23647	23648	23649	23650	23651	23652	23653	23654	23655	23656	23657	23658	-	23660	23661	23662	23663	23664	23665	23666
CW	23256	23257	23258	23259	23400	23401	23402	23403	23404	23405	23406	23407	23408	23409	23410	23411	23412	23413	23414	23415
CWR	87100	87101	87102	87103	87104	87105	87106	87107	87108	87109	87110	87111	87112	87113	87114	87115	87116	87117	87118	87119
CWS	87120	87121	87122	87123	87124	87125	87126	87127	87128	87129	87130	87131	87132	87133	87134	87135	87136	87137	87138	87139
DCW	87200	87201	87202	87203	87204	87205	87206	87207	87208	87209	87300	87302	87303	87304	87305	87306	87307	87308	87309	87310
DCWR	87331	87332	87333	87334	87335	87336	87337	87338	87339	87340	87341	87342	87343	87344	87345	87346	87347	87348	87349	87350
DCWS	87371	87372	87373	87374	87375	87376	87377	87378	87379	87380	87381	87382	87383	87384	87385	87386	87387	87388	87389	87390
DHW	87180	87181	87182	87183	87184	87185	87186	87187	87188	87189	87190	87191	87192	87193	87194	87195	87196	87197	87198	87199
DHWR	87311	87312	87313	87314	87315	87316	87317	87318	87319	87320	87321	87322	87323	87324	87325	87326	87327	87328	87329	87330
DHWS	87351	87352	87353	87354	87355	87356	87357	87358	87359	87360	87361	87362	87363	87364	87365	87366	87367	87368	87369	87370
FP	23667	23668	23669	23670	23671	23672	23673	23674	23675	23676	23677	23678	23679	23680	-	23682	23683	23684	23685	23686
GAS	23264	23265	23266	23267	23448	23449	23450	23451	23452	23453	23454	23455	23456	23457	23458	23459	23460	23461	23462	23463
HPS	44720	44721	44722	44723	44724	44725	44726	44727	44728	44729	44730	-	44732	44733	44734	44735	44736	44737	44738	44739
HTG	23268	23269	23270	23271	23464	23465	23466	23467	23468	23469	23470	23471	23472	23473	23474	23475	23476	23477	23478	23479
HW	23276	23277	23278	23279	23416	23417	23418	23419	23420	23421	23422	23423	23424	23425	23426	23427	23428	23429	23430	23431
HWR	23536	23537	23538	23539	23540	23541	23542	23543	23544	23545	23546	23547	23548	23549	23550	23551	23552	23553	23554	23555
HWS	23556	23557	23558	23559	23560	23561	23562	23563	23564	23565	23566	23567	23568	23569	23570	23571	23572	23573	23574	23575
HVAC	87140	87141	87142	87143	87144	87145	87146	87147	87148	87149	87150	87151	87152	87153	87154	87155	87156	87157	87158	87159
LPC	87390	87391	87392	87393	87394	87395	87396	87397	87398	87399	87400	87401	87402	87403	87404	87405	87406	87407	87408	87409
LPS	44740	44741	44742	44743	44744	44745	44746	44747	44748	44749	44750	44751	44752	44753	-	44755	44756	44757	44758	44759
MPS	-	-	44702	44703	44704	44705	44706	44707	44708	44709	44710	44711	44712	44713	44714	44715	44716	44717	44718	44719
OXY	87480	87481	87482	87483	87484	87485	87486	87487	87488	87489	87490	87491	87492	87493	87494	87495	87496	87497	87498	87499
PLBG	23260	23261	23262	23263	23432	23433	23434	23435	23436	23437	23438	23439	23440	23441	23442	23443	23444	23445	23446	23447
SPK	-	-	-	23630	23631	23632	23633	23634	23635	23636	23637	23638	23639	23640	23641	23642	23643	23644	23645	23646
SPR	87160	87161	87162	87163	87164	87165	87166	87167	87168	87169	87170	87171	87172	87173	87174	87175	87176	87177	87178	87179
STM	23496	23497	23498	23499	23500	23501	23502	23503	23504	23505	23506	23507	23508	23509	23510	23511	23512	23513	23514	23515
VAC	87500	87501	87502	87503	87504	87505	87506	87507	87508	87509	87510	87511	87512	87513	87514	87515	87516	87517	87518	87519

