

### Permanent Marking Pens

- Fast drying, permanent ink for identification on marker ties (pages B1.32, B1.50), marker plates (page B2.26), or cable marker straps (page B1.76)
- May be used with any label shown in the catalog when a printer is not available



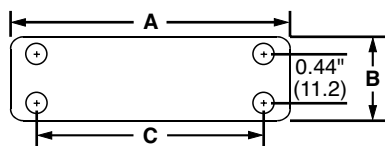
PX-0  
PX-2

PX-10

Part Number	Color	Description	Std. Pkg. Qty.	Std. Ctn. Qty.
PX-0	Black	Permanent marking pen – regular tip.	12	144
PX-2	Red	Permanent marking pen – regular tip.	12	144
PX-10	White	Marking pen for black or other dark colored parts – regular tip.	12	300

### Marker Plates – Loose Piece

- Install as flags, tags, or wrap-around identification plates to clearly identify all wire harnesses
- Use with nylon marking pens for an easy and economic alternative to identify wire harnesses
- Available in black or white to match the wire harness
- Thickness: 0.02 inches (0.5mm)



Part Number	Used with Cable Ties‡	Length A		Width B		Hole Spacing C		Material	Color	Environment	Mounting Method	Std. Pkg. Qty.	Std. Ctn. Qty.
		In.	mm	In.	mm	In.	mm						
MP150-C	M, I, S	1.50	38.1	0.75	19.0	1.03	26.2	Nylon 6.6	White	Indoors	Cable Ties	100	500
MP175-C	M, I, S	1.75	44.4	0.75	19.0	1.28	32.5					100	500
MP200-C	M, I, S	2.00	50.8	0.75	19.0	1.53	38.9					100	500
MP250-C	M, I, S	2.50	63.5	0.75	19.0	2.03	51.6					100	500
MP350-C	M, I, S	3.50	88.9	0.75	19.0	3.03	77.7					100	1000
MP250W175-C	M, I, S	2.50	63.5	1.75	44.5	2.03	51.6	Weather Resistant Nylon 6.6	Black	Indoors/Outdoors		100	1000
MP150-C0	M, I, S	1.50	38.1	0.75	19.0	1.03	26.2					100	500
MP175-C0	M, I, S	1.75	44.4	0.75	19.0	1.28	32.5					100	500
MP200-C0	M, I, S	2.00	50.8	0.75	19.0	1.53	38.9					100	500
MP250-C0	M, I, S	2.50	63.5	0.75	19.0	2.03	51.6					100	500
MP350-C0	M, I, S	3.50	88.9	0.75	19.0	3.03	77.7	100	1000				

‡Cable tie cross section sizes: M = Miniature, I = Intermediate, and S = Standard.