

5L

VF Series Vaporgard™ Fluorescent Luminaires

Cl. I, Div. 2, Groups A, B, C, D†
Cl. I, Zone 2 IIC†
Wet Locations
NEMA 3, 3R

Twin Tube Fluorescent with G24 Clear Glass Globe and P21 Guard (lamps not included)



Luminaire Watts	Hub Size (In.)	Pendant Mount Cat. #	Ceiling Mount Cat. #	Wall Mount (w/Box) Cat. #	Wall Mount (No Box) Cat. #	Angle Stanchion Mount* Cat. #	Through Feed Mount Cat. #	Box Mount & Retrofit Cat. #
2 Lamps, 9W Each	1/2	VFA122GP	VFHF122GP	VFHBF122GP	VFHT122GP		VFC122GP	VFH122GP
	3/4	VFA222GP	VFHF222GP	VFHBF222GP	VFHT222GP		VFC222GP	
	1	VFA322GP						
	1 1/4					VFHA422GP		

VF Series with Colored Glass Globes or Plastic Globes

To obtain:

- Substitute appropriate globe designation for "G" in above Cat. Nos.

Accessories and Components

Reflectors



Type	Cat. #
Dome (Cannot be used with wall mount luminaires)	RD71
30° Angle	RA71

Globes



Globe Color	Glass Cat. #	Plastic Cat. #*	Guard	Guard Cat. #
Clear	G24	G63	For use with glass globes only	P21
Green	G25	G65		
Blue	G26			
Red	G27	G67		
Amber	G28			

Guards



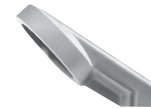
Junction Boxes and Bracket Bodies



VXF - 4 Hubs, 3 Plugs



VXT - 3 Hubs, 2 Plugs



VXA - Stanchion Mount (Non-hazardous Locations)

VXF - 4 Hubs, 3 Plugs Hub Size (In.)	Cat. #	VXT - 3 Hubs, 2 Plugs Hub Size (In.)	Cat. #	VXA - Stanchion Mount (Non-hazardous Locations) Hub Size (In.)	Cat. #
1/2	VXF10	1/2	VXT10	1/4	VXA4
3/4	VXF20	3/4	VXT20		



VXFT - 5 Hubs, 4 Plugs



VXT-K1

VXFT - 5 Hubs, 4 Plugs Hub Size (In.)	Cat. #	Mounting Adapter Kit Description	Cat. #
1/2	VXFT10	Allows for the mounting of non-Eaton's Crouse-Hinds outlet boxes to the VXT20 wall mount bracket and VXH ceiling mount bracket	VXT K1
3/4	VXFT20		

*For non-hazardous locations.
†All mountings except stanchion.

Crouse-Hinds
by **F.T.N**