

1 100 Ampere Meter Sockets

Shallow Enclosure

Product Specifications

- ◆ Available with or without a factory installed hub.
- ◆ Tunnel type line and load lugs (#6 - 1/0AWG Cu).
- ◆ CSA Approved for Copper conductors only.
- ◆ 4 Jaw configuration standard, optional 5th jaw available for 6 or 9 o'clock position mounting (See page 20).
- ◆ For applications requiring an insulated neutral a field installable kit is available (See page 19).

Product Selection

Table 1. 100A 600VAC Maximum Shallow Enclosure Meter Socket

Catalogue Number	Service Entrance	Enclosure Rating	Hub	Knockouts (quantity & type)			Weight lbs (kg)	Dimensions in (mm)
				Sides	Bottom	Back		
S1-N1-1/4	Overhead	Type 3R	Factory Installed 1-1/4"	(1) C	(2) B (1) D	(1) C	5 (2.3)	9 x 7-3/8 x 3-1/2 (228.6 x 187.3 x 88.9)
S12-N1-1/4			Factory Installed (2) 1-1/4"					
S1-N			Single Hub Opening with Plate					
S12-N			Two Hub Openings with Plates					
S11-N		Type 1	Single Concentric (1", 1-1/4", 1-1/2") Knockout					

Table 2. Conduit Knockout Legend

Knockout Code [Ⓢ]	Conduit Knockout Sizes
B	1/2", 1", 1-1/4"
C	1", 1-1/4"
D	1", 1-1/4", 1-1/2"

Table 3. Lug Cable Capacities

Location	Cable Size (Cu)
Line	#6-1/0
Load	
Neutral	

[Ⓢ] To determine knockout locations and quantity refer to knockouts column in table 1 and location map below.

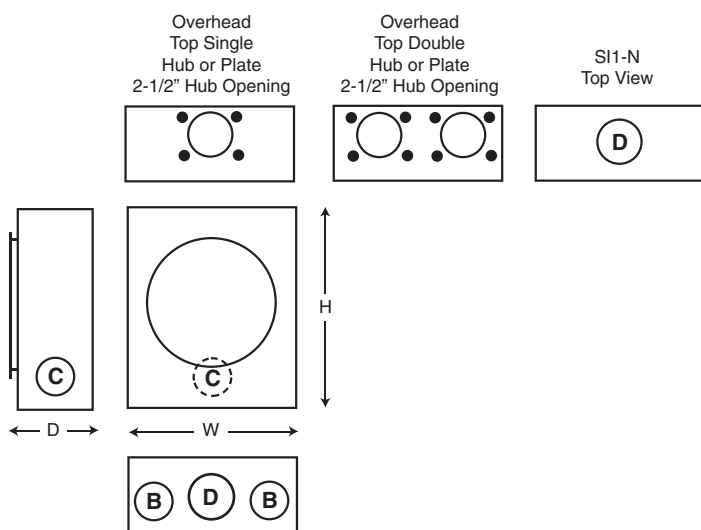


Figure 1. 100A Shallow Meter Socket Knockout Location Map



S1-N1-1/4