

# Condulet® EAJ Series Conduit Outlet Boxes with Covers

Cl. I, Div. 1 & 2, Groups A, B, C, D  
Cl. II, Div. 1, Groups E, F, G  
Cl. II, Div. 2, Groups F, G  
Cl. III  
NEMA 3, 4, 7ABCD, 9EFG

Explosionproof  
Dust-ignitionproof  
Raintight  
Wet Locations

3F  
3F

## Applications:

EAJ Series Conduit Outlet Boxes are installed in conduit systems within hazardous areas to:

- Protect conductors in threaded rigid conduit
- Act as pull and splice boxes
- Interconnect lengths of conduit
- Change conduit direction
- Provide access to conductors for maintenance and future system changes
- Act as mounting outlets for fixtures (with appropriate covers)
- Act as sealing fittings (with appropriate covers)

## Features:

EAJ Conduit Outlet Boxes have:

- Water shedding cover – suitable for wet locations when mounted in upright position
- External cover threads on body protecting conductors from damage during pulling
- No pinching of conductors during cover installation
- Six different hub arrangements
- Taper threaded hubs to provide ground continuity
- Smooth integral hub bushing to protect conductor insulation when pulling
- Internally threaded cover openings for additional wiring room
- Flat overlapping threaded covers furnished with boxes
- Weather-resistant finish
- Internal green ground screw #10 standard in all boxes
- Four standard mounting pads, except for EAJB and EAJD

## Certifications and Compliances:

### NEC/CEC:

- Class I, Divisions 1 & 2, Groups A, B, C, D
- Class II, Division 1, Groups E, F, G
- Class II, Division 2, Groups F, G
- Class III

### UL Standard:

- UL1203

### CSA Standard:

- C22.2 No. 30

## Standard Materials:

- Body – Feraloy® iron alloy
- Cover – copper-free aluminum

**A** Form 9 products with 5" cover opening are not suitable for Group A.

**B** Available in copper-free aluminum. To order, add suffix 'SA' to end of catalog number.

**C** EAJ0687 is listed for Groups C and D only.

## Standard Finishes:

- Feraloy iron alloy – electrogalvanized and aluminum acrylic paint
- Aluminum – natural

## Options:

- | Description  | Suffix      |
|--|-------------|
| • Bodies – copper-free aluminum .....                      | <b>SA</b>   |
| • Covers – Feraloy iron alloy.....                         | <b>WOD</b>  |
| <i>Electrogalvanized and aluminum acrylic paint finish</i> |             |
| • Corro-free™ epoxy powder coat.....                       | <b>S752</b> |

## Ordering Information:

### EAJB



Cover Opening Dia.	Hub Size	Cat. #
3 <sup>3</sup> / <sub>16</sub>	1/2"	EAJB16
3 <sup>3</sup> / <sub>16</sub>	3/4"	EAJB26 <sup>B</sup>
3 <sup>3</sup> / <sub>16</sub>	1"	EAJB36 <sup>B</sup>

### EAJC



Cover Opening Dia.	Hub Size	Cat. #
3 <sup>3</sup> / <sub>16</sub>	1/2"	EAJC16 <sup>B</sup>
3 <sup>3</sup> / <sub>16</sub>	3/4"	EAJC26 <sup>B</sup>
3 <sup>3</sup> / <sub>16</sub>	1"	EAJC36 <sup>B</sup>

### EAJD



Cover Opening Dia.	Hub Size	Cat. #
3 <sup>3</sup> / <sub>16</sub>	1/2"	EAJD16
3 <sup>3</sup> / <sub>16</sub>	3/4"	EAJD26 <sup>B</sup>
3 <sup>3</sup> / <sub>16</sub>	1"	EAJD36 <sup>B</sup>

### EAJL



Cover Opening Dia.	Hub Size	Cat. #
3 <sup>3</sup> / <sub>16</sub>	1/2"	EAJL16 <sup>B</sup>
3 <sup>3</sup> / <sub>16</sub>	3/4"	EAJL26 <sup>B</sup>
3 <sup>3</sup> / <sub>16</sub>	1"	EAJL36 <sup>B</sup>

### EAJT



Cover Opening Dia.	Hub Size	Cat. #
3 <sup>3</sup> / <sub>16</sub>	1/2"	EAJT16 <sup>B</sup>
3 <sup>3</sup> / <sub>16</sub>	3/4"	EAJT26 <sup>B</sup>
5	1 1/4"	EAJT49 <sup>A B</sup>
5	1 1/2"	EAJT59 <sup>A B</sup>
5	2"	EAJT69 <sup>A B</sup>

### EAJX



Cover Opening Dia.	Hub Size	Cat. #
3 <sup>3</sup> / <sub>16</sub>	1/2"	EAJX16 <sup>B</sup>
3 <sup>3</sup> / <sub>16</sub>	3/4"	EAJX26 <sup>B</sup>
3 <sup>3</sup> / <sub>16</sub>	1"	EAJX36 <sup>B</sup>

## Size Ranges:

- Hub – 1/2" to 2"
- Cover opening – 3<sup>3</sup>/<sub>16</sub>" to 5" diameter

## EAJ Threaded Covers

### Flat Covers



Cover Opening Dia.	Cat. #
3 <sup>3</sup> / <sub>16</sub>	EAJ06
5	EAJ09

### Dome Covers



Cover Opening Dia.	Depth	Cat. #
3 <sup>3</sup> / <sub>16</sub>	2	EAJ0612

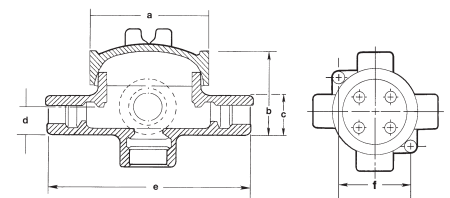
## Fixture Covers

### Union Hub Type



Cover Opening Dia.	Fixt. Stem Size	Cat. #
3 <sup>3</sup> / <sub>16</sub>	3/4"	EAJ0687 <sup>C</sup>

## Dimensions (in Inches):



Cat. #	a	b	c	d	e	f
16	3 <sup>3</sup> / <sub>4</sub>	2 <sup>17</sup> / <sub>32</sub>	1 <sup>1</sup> / <sub>2</sub>	3/4	5 <sup>5</sup> / <sub>16</sub>	3 <sup>3</sup> / <sub>32</sub>
26	3 <sup>3</sup> / <sub>4</sub>	2 <sup>25</sup> / <sub>32</sub>	1 <sup>3</sup> / <sub>4</sub>	7/8	5 <sup>9</sup> / <sub>16</sub>	3 <sup>7</sup> / <sub>32</sub>
36	3 <sup>3</sup> / <sub>4</sub>	2 <sup>25</sup> / <sub>32</sub>	1 <sup>3</sup> / <sub>4</sub>	7/8	5 <sup>9</sup> / <sub>16</sub>	3 <sup>7</sup> / <sub>32</sub>
49	5 <sup>3</sup> / <sub>4</sub>	4 <sup>1</sup> / <sub>16</sub>	2 <sup>3</sup> / <sub>16</sub>	1 <sup>3</sup> / <sub>32</sub>	7 <sup>5</sup> / <sub>16</sub>	4 <sup>3</sup> / <sub>4</sub>
59	5 <sup>3</sup> / <sub>4</sub>	4 <sup>1</sup> / <sub>16</sub>	3	1 <sup>1</sup> / <sub>2</sub>	7 <sup>13</sup> / <sub>16</sub>	4 <sup>3</sup> / <sub>4</sub>
69	5 <sup>3</sup> / <sub>4</sub>	4 <sup>1</sup> / <sub>16</sub>	3	1 <sup>1</sup> / <sub>2</sub>	7 <sup>13</sup> / <sub>16</sub>	4 <sup>3</sup> / <sub>4</sub>