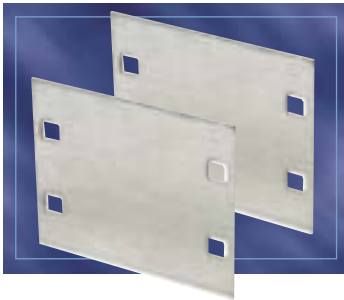


Accessories, Splice Plates

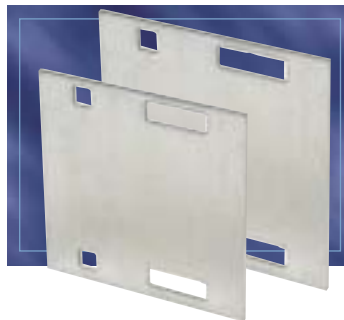
Splice Plate



Packaged in pairs with zinc plated hardware. Provided as standard with each straight and/or fitting.

Material Prefix	Siderail Height	Catalogue Number
SPW	3"	(Prefix)-3-SSP
SHW	4"	(Prefix)-4-SSP
SSW	5"	(Prefix)-5-SSP
	6"	(Prefix)-6-SSP
	7"	(Prefix)-7-SSP

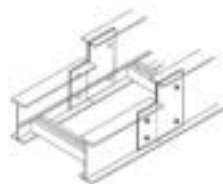
Expansion Splice Plate



Allows for a 1" expansion or contraction of tray system. Packaged in pairs with hardware.

Material Prefix	Siderail Height	Catalogue Number
SPW	3"	(Prefix)-3-ESP
SHW	4"	(Prefix)-4-ESP
SSW	5"	(Prefix)-5-ESP
	6"	(Prefix)-6-ESP
	7"	(Prefix)-7-ESP

Step Down Splice Plate



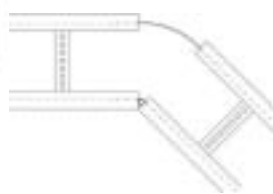
Connects siderails of different heights. Hardware included.

Material Prefix	Catalogue Number
SPW	(Prefix)-(*)-(**)-SDS
SHW	
SSW	

(*) Insert siderail height 1
(**) Insert siderail height 2

Note: Siderail height is greater than siderail height 2.

Horizontal Adjustable Plate



Adjustable hinge plates provide maximum horizontal installation flexibility. Furnished in pairs with hardware.

Material Prefix	For Tray Widths	Catalogue Number
SPW	6"	(Prefix)-(*)06HAP
SHW	9"	(Prefix)-(*)09HAP
SSW	12"	(Prefix)-(*)12HAP
	18"	(Prefix)-(*)18HAP
	24"	(Prefix)-(*)24HAP
	30"	(Prefix)-(*)30HAP
	36"	(Prefix)-(*)36HAP
	42"	(Prefix)-(*)42HAP

(*) Insert Siderail Height.