

# Conduit Elbows

## Type 8 Series

### 90° Short Conduit Elbow

### 45° Short Conduit Elbow

#### Use:

Provides a 90° or 45° change in direction in hazardous and ordinary locations where a short radius turn is needed.

#### Features:

- Threaded for rigid conduit and IMC
- Female - NPT
- Male - NPT
- Available with insulated throat

#### Material/Finish:

Malleable Iron/Zinc Electroplated

#### Optional Finish:

Mechanical Galvanize. Add suffix "G" to standard catalog number. Contact your local representative for pricing and availability.

#### Third Party Certification:



UL Listed: E-34997

Suitable for hazardous locations as follows:

1/2" - 1":

Class I, Div. 1, 2, Groups A, B, C, D  
Class I, Zone 1, 2, Groups IIA, IIB, IIC  
Class II, Div. 1, 2, Groups E, F, G  
Class III

1 1/4" - 2":

Class I, Div. 1, 2, Groups C, D  
Class I, Zone 1, 2, Groups IIA, IIB  
Class II, Div. 1, 2, Groups E, F, G  
Class III

Suitable for wet locations



CSA Certified: 009795

#### Applicable Third Party Standards:

UL Standards: 514B and 886

CSA Standard: C22.2 No. 30

NEC Articles 500-503 & 505

Mil. Spec: Mil-F-28675

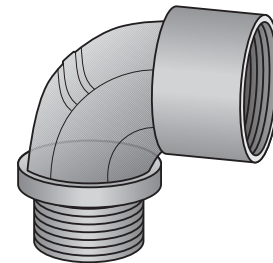
#### Suggested Specifications:

Where 90° male/female short conduit elbows are required, they shall be of malleable iron construction, UL Listed for use in wet and hazardous locations as defined in NEC articles 500 through 503 and 505. The conduit elbow fittings shall be O-Z/Gedney Type 8 Series.

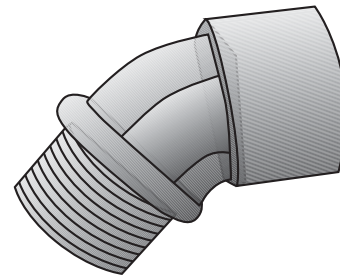
Trade Size (inches)	90°		Insulated Throat	
	Catalog Number	Catalog Number	Dim. in Inches	
1/2	8-50	8-50T	1 5/16	9/16
3/4	8-75	8-75T	1 5/8	5/8
1	8-100	8-100T	1 7/8	1 1/16
1 1/4	8-125	8-125T	2 1/4	3/4
1 1/2	8-150	8-150T	2 1/2	3/4
2	8-200	8-200T	3	3/4

Trade Size (inches)	45°		Insulated Throat	
	Catalog Number	Catalog Number	Dim. in Inches	
1/2	8-450	8-450T	1 1/16	1/2
3/4	8-475	8-475T	1 1/8	9/16
1	8-4100	8-4100T	1 1/8	5/8
1 1/4	8-4125	8-4125T	1 3/4	5/8
1 1/2	8-4150	8-4150T	1 7/8	5/8
2	8-4200	8-4200T	2 1/4	1 1/16



Type 8 Series 90° Short



Type 8 Series 45° Short

