

## Low Profile Low Voltage Mounting Bracket



LV1LP

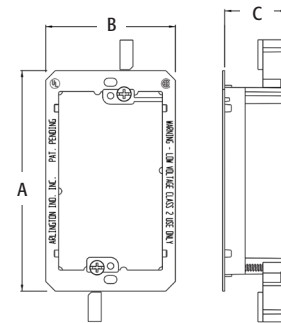
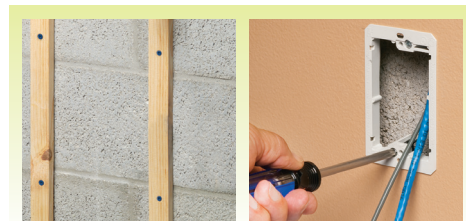
Single gang for use with 1/4" or 5/8" drywall installed on cast concrete or concrete block walls with furring strips low voltage Class 2 only.

### FEATURES AND BENEFITS

- Non-metallic—better than metal and costs less too
- Bracket is its own template for cut out
- Adjusts to fit 1/4" to 5/8" thick wallboard, paneling, or drywall
- For communications, cable TV, computer wiring
- Mounting wings hold bracket securely against wall when screws are tightened

CATALOG NUMBER	UPC/DCI/NAED MFG #018997	DESCRIPTION	UNIT PKG	STD PKG	DIM A	DIM B	DIM C
LV1LP	58177	Single Gang	10	100	4.260	2.500	1.200
LV2LP	23102	2-Gang	5	50	4.260	4.185	1.200

PATENT PENDING.



## Non-Metallic Wire Bushings for Class 2 Wire



For installation of low voltage wire through wall finish. Covers cut edges of opening. Paintable. Designed to install low voltage Class 2 only.

### FEATURES AND BENEFITS

- Provides a great-looking job and easy, smooth insertion of cable through wall
- Quick installation with a drill bit or a hole saw
- Easy entry and exit of low voltage cable or speaker wire through wall
- The attractive way to finish cut edges

CATALOG NUMBER	UPC/DCI/NAED MFG #018997	UNIT PKG	STD PKG	DIM A	DIM B	DIM C	DIM D	DIM E
WB500	52950	100	100	.500	.750	.281	.875	.400
WB875	52951	100	100	.875	.750	.281	1.250	.750
WB112	52952	50	50	1.125	.750	.281	1.500	1.000
WB200	52953	50	50	2.000	.750	.281	2.500	1.875

PATENT PENDING.

