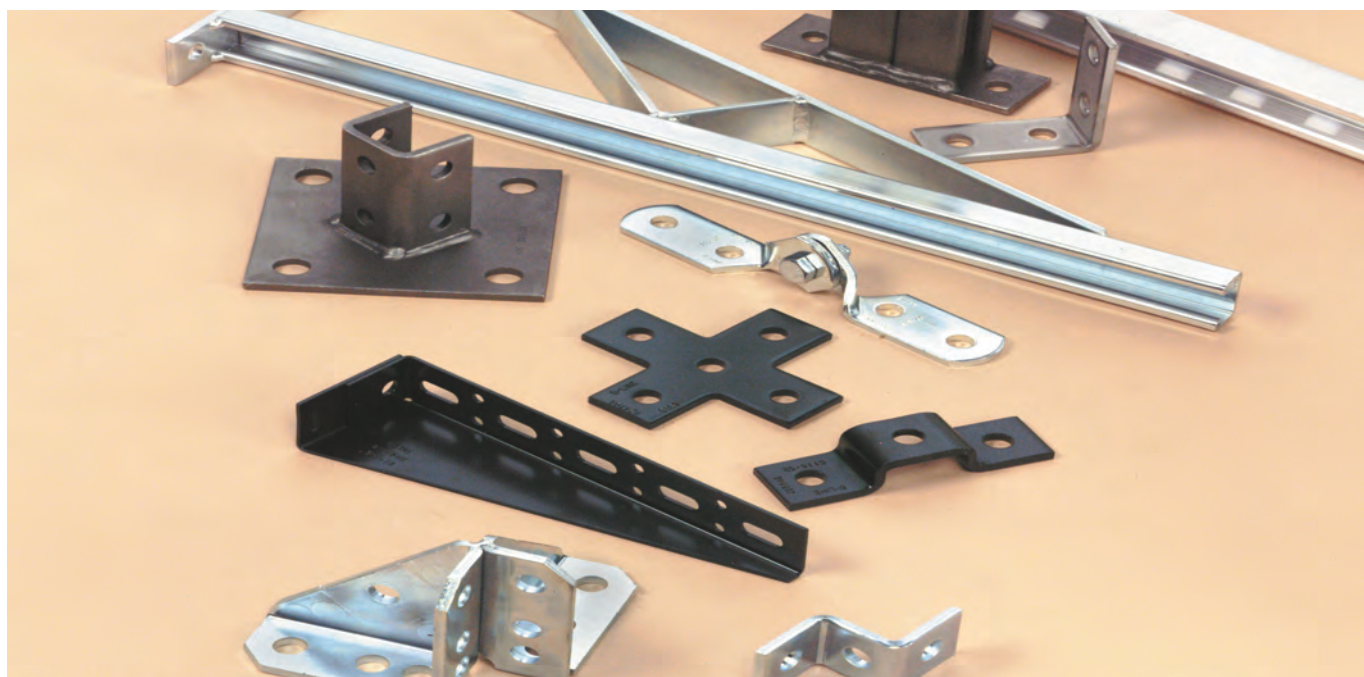


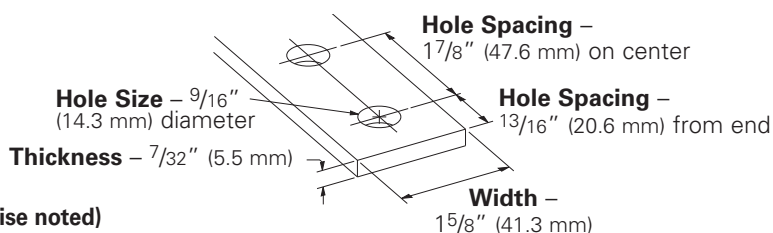
Fittings



This section offers a full selection of fittings and accessories to complete our strut system. Fittings are made from hot rolled, pickled and oiled plate or strip steel in accordance with ASTM A1018 33,000 PSI min. yield, unless noted.

Dimensions

The following dimensions apply to all fittings except as noted:



Materials & Finishes (Unless otherwise noted)

Finish Code	Finish	Specification
PLN	Plain	ASTM A1018 33,000 PSI min. yield
ZN	Electro-Plated Zinc	ASTM B633 SC3 Type III or ASTM A653
GRN	DURA GREEN™	
HDG	Hot-Dipped Galvanized	ASTM A123
SS4	Stainless Steel Type 304	ASTM A240
SS6	Stainless Steel Type 316	ASTM A240
AL	Aluminum	ASTM B209

Note: A minimum order may apply on special material and finishes.

Hardware

Nuts and bolts are not included with the fittings and must be ordered separately, unless noted.

Pre-Assembled Fittings

Some fittings are available with hex head cap screws and channel nuts pre-assembled. These fittings and finishes will be flagged using the following symbol.



PA ^{ZN}
GRN

Metric

Metric dimensions are shown in parentheses. Unless noted, all metric dimensions are in millimeters.

Load Data

The load data published includes safety factor of 2.5 when used with 12 ga. (2.6) channel (safety factor = ratio of ultimate load to the design load). Use 1/2"-13 x 7/8" hex head cap screws and 1/2"-13 (N225 or TN225) channel nuts for the rated results.

Recommended Bolt Torque

Bolt Size	1/4"-20	5/16"-18	3/8"-16	1/2"-13
Foot/Lbs.	6	11	19	50
Nm	8	15	26	68

See chart on page 113 for setscrew torque.

4Dimension™ Strut System Compatible

These fittings and finishes will be flagged using the following symbol.



Angular Fittings

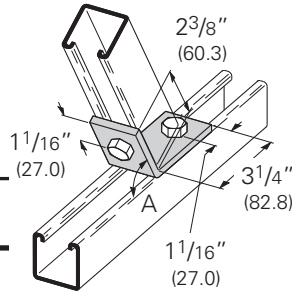
B147-B152

Two Hole Open Angle

- Standard finishes: ZN, GRN



Part No.	A	Wt./C Lbs. kg
B147	82 $\frac{1}{2}$ °	63 (28.6)
B148	75°	
B149	67 $\frac{1}{2}$ °	
B150	60°	
B151	52 $\frac{1}{2}$ °	
B152	37 $\frac{1}{2}$ °	



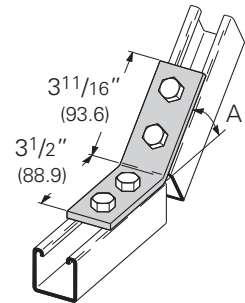
B243-B253

Four Hole Open Angle

- Standard finishes: ZN, GRN



Part No.	A	Wt./C Lbs. kg
B243	71 $\frac{1}{2}$ °	77 (34.9)
B244	15°	
B245	22 $\frac{1}{2}$ °	
B246	30°	
B247	37 $\frac{1}{2}$ °	
B248	45°	
B249	52 $\frac{1}{2}$ °	
B250	60°	
B251	67 $\frac{1}{2}$ °	
B252	75°	
B253	82 $\frac{1}{2}$ °	



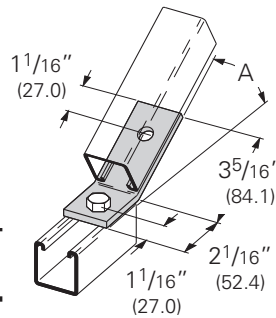
B162-B165

Two Hole Open Angle

- Standard finishes: ZN, GRN



Part No.	A	Wt./C Lbs. kg
B162	30°	59 (26.7)
B163	22 $\frac{1}{2}$ °	
B164	15°	
B165	7 $\frac{1}{2}$ °	



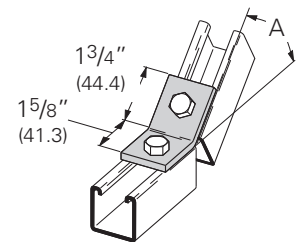
B322-B332

Two Hole Open Short Angle

- Standard finishes: ZN, GRN



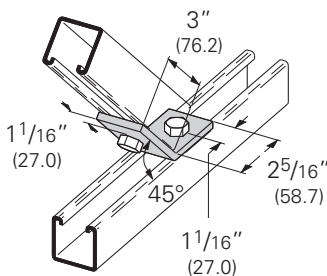
Part No.	A	Wt./C Lbs. kg
B322	71 $\frac{1}{2}$ °	35 (15.9)
B323	15°	
B324	22 $\frac{1}{2}$ °	
B325	30°	
B326	37 $\frac{1}{2}$ °	
B327	45°	
B328	52 $\frac{1}{2}$ °	
B329	60°	
B330	67 $\frac{1}{2}$ °	
B331	75°	
B332	82 $\frac{1}{2}$ °	



B154

Two Hole Open Angle

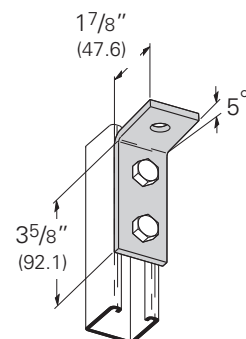
- Standard finishes: ZN, GRN, SS4
- Wt./C 58 Lbs. (26.3 kg)



B522

Three Hole 95° Open Angle Fitting

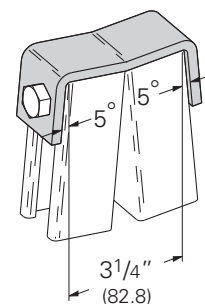
- Standard finishes: ZN, GRN
- Wt./C 54 Lbs. (24.5 kg)



B488

Two Hole Leg Connection

- Standard finishes: ZN, GRN
- Wt./C 100 Lbs. (45.3 kg)



4Dimension compatible fitting

Reference page 73 for general fitting and standard finish specifications.