

Condulet GRUE cable outlet boxes

Cl. I, Div. 1 & 2, Groups B, C, D
 Cl. II, Div. 1, Groups E, F, G
 Cl. II, Div. 2, Groups F, G
 Cl. III
 NEMA 3, 4

3F

Applications:

GRUE outlet boxes are intended for use within hazardous areas to:

- Terminate cable connectors
- Interconnect lengths of conduit
- Protect conductors in threaded rigid conduit
- Act as pull and splice boxes
- Change conduit direction
- Provide access to conductors for maintenance and future system changes

Features:

- Five threaded hub locations; includes three close-up plugs
- Tapered threaded hubs to provide ground continuity
- Internal green ground screw
- Smooth, rounded internal bushing in each hub protects conductor installation
- External threaded body and jar style cover provides additional wiring room
- Cover threads are 16 pitch
- Cast ears on cover to permit easy removal and tightening
- Elevated mounting feet, enabling hubs to accept cable connector termination and removal when surface mounted
- No stand-offs required for mounting feet when installing larger potted barrier glands
- Neoprene o-ring standard to meet NEMA 4 requirements
- Copper-free aluminum body and cover provide resistance to corrosive atmospheres
- Surface cover furnished with box
- Sealing cover available with $\frac{3}{4}$ " hub

Certifications and compliances:

NEC/CEC:

- Class I, Divisions 1 & 2, Groups B, C, D
- Class II, Division 1, Groups E, F, G
- Class II, Division 2, Groups F, G
- Class III

UL standard:

- UL1203

ANSI standard:

- C33.27

CSA standard:

- C22.2 No. 30

Environmental ratings:

- NEMA 3, 4

Standard material:

- Body and cover – copper-free aluminum

Standard finish:

- Aluminum – natural

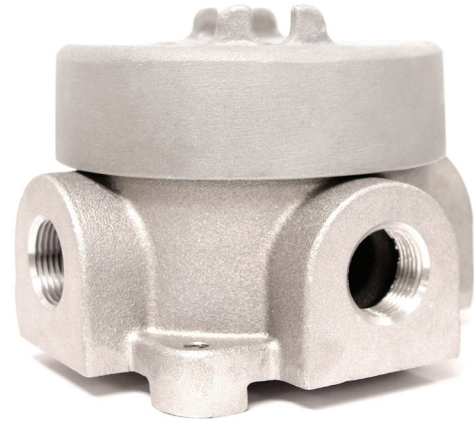
Size ranges:

- Hub – $\frac{1}{2}$ " to 1"
- Cover opening – 5" diameter

^A Sealing cover cannot be used with TB* or DIN* options.

^B Products provide a 30 amp, 300V Phoenix G5/4 or G5/6 terminal block for wire size #10 AWG, directly mounted to a mounting strap.

^C Products provide a 24 amp, 250V Phoenix MBK5 type terminal block for wire size #24 to #12 AWG mounted on a DIN rail.



Options:

Description	Suffix
• Assembled with sealing cover	SC^A
• 1 row, 4 terminal blocks	TB14^B
• 1 row, 6 terminal blocks	TB16^B
• 1 row, 8 terminal blocks	TB18^B
• 1 row, 4 terminal blocks	DIN14^C
• 1 row, 6 terminal blocks	DIN16^C
• 1 row, 8 terminal blocks	DIN18^C

Ordering information:

Hub size	Cat. #
$\frac{1}{2}$ "	GRUE19
$\frac{3}{4}$ "	GRUE29
1"	GRUE39

Flat cover



Cover opening dia.	Cat. #
5"	GRUE09

Sealing cover



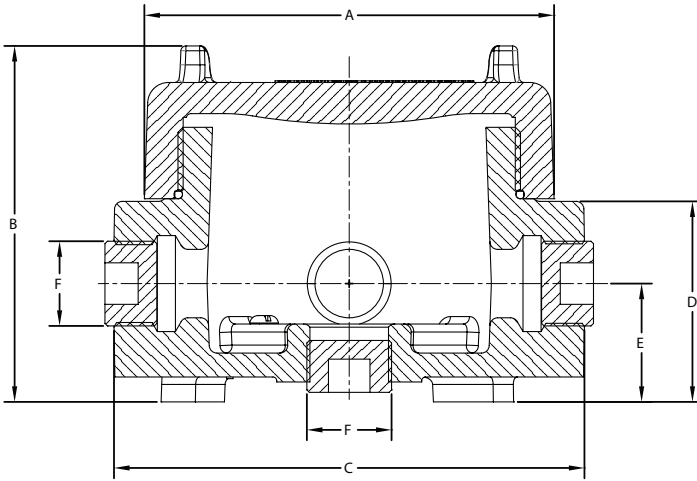
Cover opening dia.	Cat. #
5"	GRUE02

Condulet GRUE cable outlet boxes

Cl. I, Div. 1 & 2, Groups B, C, D
 Cl. II, Div. 1, Groups E, F, G
 Cl. II, Div. 2, Groups F, G
 Cl. III
 NEMA 3, 4

3F
3F

Dimensions (in inches):



A	B	C	D	E	F
$4^{15}/16$	$4^{9}/32$	$5^{21}/32$	$2^{13}/32$	$1^{7}/16$	$1/2$ " NPT
$4^{15}/16$	$4^{9}/32$	$5^{21}/32$	$2^{13}/32$	$1^{7}/16$	$3/4$ " NPT
$4^{15}/16$	$4^{9}/32$	$5^{21}/32$	$2^{13}/32$	$1^{1}/4$	1" NPT