

Cast device boxes

FS & FD boxes

Applications:

Cast device boxes are installed to:

- Accommodate wiring devices
- Act as pull boxes for conductors in a conduit system
- Provide openings to make splices and taps in conductors
- Use indoors and outdoors
- Use in applications where boxes may be subjected to rough use

Features:

- Green ground screw is located on the flange of the box for easy ground wire termination and is standard on boxes
- Suitable for use in wet locations when used with gasket and flat blank covers
- Mounting lugs standard
- Tapered threaded hubs (NPT) with integral bushing
- Available as shallow (FS) or deep (FD) configuration
- Ample wiring room provided in either FS or FD configuration
- Wide selection of surface or flush covers available in three materials (sheet malleable, steel, aluminum)
- Malleable iron construction provides high tensile strength for strong, dependable service
- Covers are individually bagged and supplied with screws



Standard material:

- Malleable iron

Standard finish:

- Malleable iron – zinc electroplate

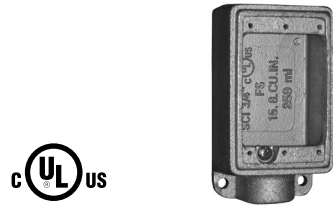
Options:

- | | |
|----------------------------|---------------|
| Description | Suffix |
| • Hot dip galvanized | HDG |

Certifications and compliances:

- cULus
- cCSAus

FS BOXES



FSM1

Cat. #	Size	Unit qty.	Wt. lbs. per 100
FSM1	1/2"	5	222
FSM2	3/4"	5	234
FSM3	1"	5	243

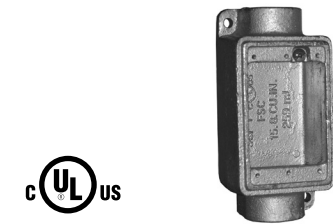
FD BOXES



FDM1

Cat. #	Size	Unit qty.	Wt. lbs. per 100
FDM1	1/2"	2	278
FDM2	3/4"	2	273
FDM3	1"	2	284

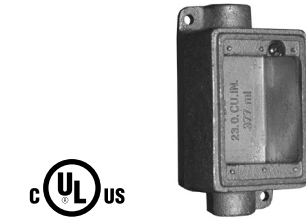
FSC BOXES



FSCM1

Cat. #	Size	Unit qty.	Wt. lbs. per 100
FSCM1	1/2"	5	234
FSCM2	3/4"	5	241
FSCM3	1"	5	250

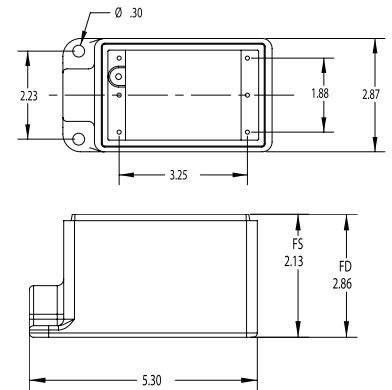
FDC BOXES



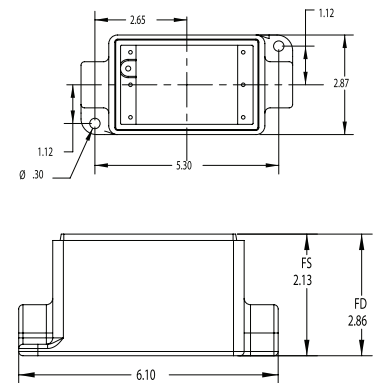
FDCM1

Cat. #	Size	Unit qty.	Wt. lbs. per 100
FDCM1	1/2"	2	313
FDCM2	3/4"	2	294
FDCM3	1"	2	306

FS & FD dimensions



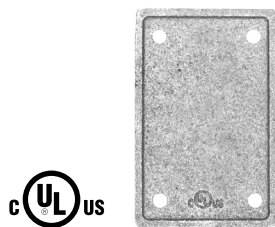
FSC & FDC dimensions



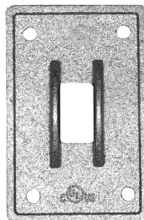
Cast device boxes

FS & FD covers

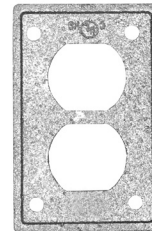
FS & FD COVERS – MALLEABLE



FBCM1



SWCM1



RCM1

Cat. #	Description	Unit qty.	Wt. lbs. per 100
FBCM1	Malleable iron flat blank cover	25	56
SWCM1	Malleable iron switch cover	25	63
RCM1	Malleable iron duplex receptacle cover	25	55

FS & FD COVERS – STEEL



FBSC1



SWCS1



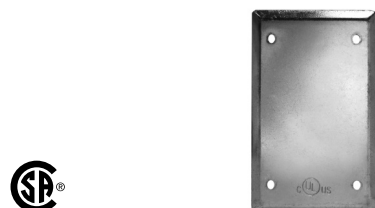
RCS1



GFICS1

Cat. #	Description	Unit qty.	Wt. lbs. per 100
FBSC1	Steel flat blank cover	25	18
SWCS1	Steel switch cover	25	16
RCS1	Steel duplex receptacle cover	25	13
GFICS1	Steel GFCI cover	25	12

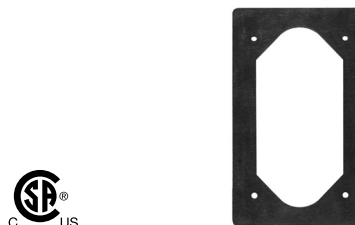
FS & FD COVERS – ALUMINUM



FBAC1

Cat. #	Description	Unit qty.	Wt. lbs. per 100
FBAC1	Aluminum flat blank cover	25	9

FS & FD BOX GASKETS



FSGSK1

Cat. #	Description	Unit qty.	Wt. lbs. per 100
FSGSK1	Neoprene gasket	25	3.5

Cast device boxes

Cast device boxes

VXF stainless steel junction boxes

Applications:

For use where high quality, durable products that withstand corrosion, chemical treatments and wash downs are required, including:

- Wastewater treatment plants
- Food and beverage facilities
- Pharmaceutical plants
- Pulp and paper mills
- Mines

VXF stainless steel junction boxes are installed in threaded rigid conduit systems to:

- Act as junction boxes for making terminations
- Act as pull outlets

Features:

VXF junction box

Includes:

- Four tapped conduit openings with three 316 stainless steel installed recessed hex plugs
- Four 1/4-20 x 1" stainless steel hex head bolts for mounting box to surface
- One 10-32 x 1/4" installed green ground screw with slotted head

VXF hub cover

Includes:

- Fixture rated up to 130 lbs. with VXF body
- Neoprene gasket
- Four 1/4-20 x 5/8" stainless steel hex head bolts and lock washer for cover attachment to box
- One 10-24 x 5/8" Phillips pan head set screw

VXF blank cover

Includes:

- Neoprene gasket
- Four 1/4-20 x 5/8" stainless steel hex head bolts for cover attachment to box
- GRF10SS comes with PVC protective peel off coating

GRF replacement gasket

Includes:

- Neoprene gasket

Certifications and compliances:

- UL/cUL Listed, File No. E-15022
- NEC/CEC
 - Class I, Division 2
 - Class II, Divisions 1 & 2
 - Class III
- Fixture rated (with pendant cover)
- UL514A
- Wet locations
- NEMA 4X
- Assembled in the USA



Standard materials:

- Body, plugs and cover – 316 stainless steel
- Nuts and washers – stainless steel
- Gasket – neoprene

Standard finishes:

- Body, plugs, nuts and washer – natural
- GRF10SS – natural with #4 brushed finish

VXF JUNCTION BOXES



Cat. #	Description
VXF20SS	3/4" X style junction box
VXF30SS	1" X style junction box

VXF HUB COVER



Cat. #	Description
VXF12SS	3/4" pendant cover with gasket

VXF BLANK COVER



Cat. #	Description
GRF10SS	Flat cover with gasket

GRF REPLACEMENT GASKET



Cat. #	Description
GASK643	Neoprene gasket

Cast device boxes