

Cam-Lok™ J Series Connectors are specifically designed to meet the needs of demanding portable applications. J Series Plugs and Receptacles are the proven industry standard single pole connectors for reliability and service with added safety.

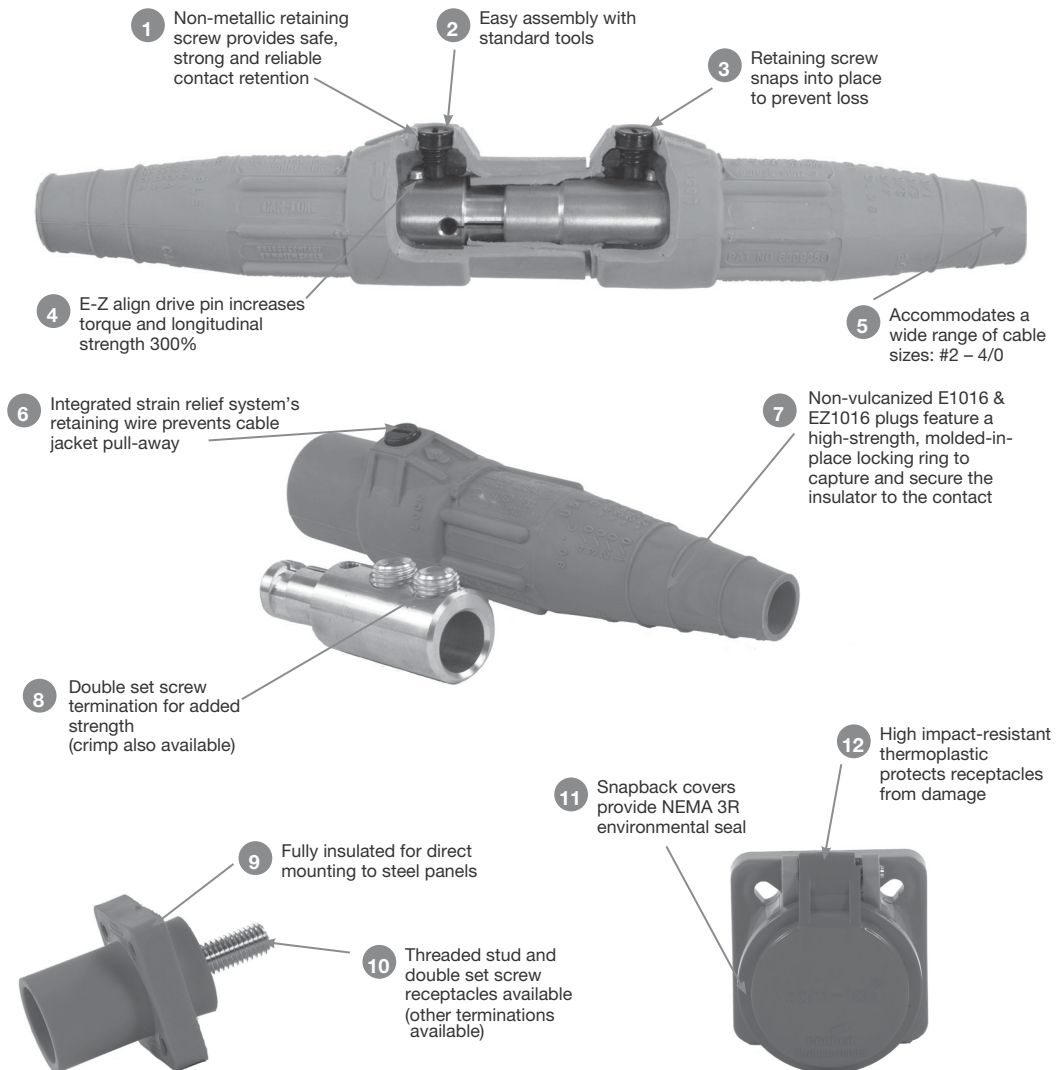
Applications:

- J Series Plugs and Receptacles are specifically designed for industrial power distribution applications requiring quick, tool-free connections
- Ideal for portable power, power distribution, motors, generators, and entertainment applications
- J Series replaces traditional hard wiring while cutting downtime and maintenance
- J Series Connectors are insulated, shatter/crack-resistant and watertight, plus heat-, weather-, ozone-, oil-, and abrasion-resistant

Certifications and Compliances:

- Listed to UL498, File No. E67181
- CSA certified to C22.2 No. 182.3 LR13963

Features:



Environmental Ratings:

- NEMA 3R or NEMA 4

Standard Materials:

- Accepts cable sizes: #8 AWG - 750 MCM
- Insulator - elastomeric or rubber
- Contact - brass or copper

Electrical Ratings:

- 600 Volts AC/DC
- 690 Amps continuous

Temperature Ratings:

- -40°C to 105°C

11P Cam-Lok™ Standard Series E1018 Receptacles and Accessories

Cable Size #2 AWG - 4 / 0
600V AC/DC
Up to 400A Continuous

NEMA 3R

Standard Series E1018, Elastomeric, Double Set Screw

Features:

- Double cam principle provides a positive, vibration-proof connection
- Self-compensating for wear
- No moving contact surfaces, eliminating arcing or burning
- Superior electro-mechanical connections
- Locked contacts will withstand a pulling force of 1,000 lbs.
- 1/3 of a turn assures a high pressure contact approaching 600 lbs. per sq. in., providing minimum resistance
- Contacts carefully machined from a high conductivity brass to a smooth sliding fit and easy locking action
- Watertight elastomeric body molded from colorfast material, color-coded for easy phase identification
- Recessed contacts protected by insulating jacket that extends beyond contact ends for safety
- Receptacles are safety insulated for direct mounting to steel panels

Testing and Code Compliance:

- CSA certified to C22.2 No. 182.3-M1987, File No. LR13963

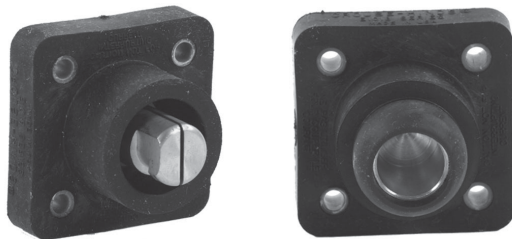
Material Characteristics:

- Insulator - TPE
- Environmental rating: NEMA 3R
- Temperature rating: -40°C to 105°C

Insulated Receptacles - Double Set Screw Tightening Torque:

Cable	Torque (Lbs.)
#2 - #1	100
1 / 0 - 2 / 0	120
3 / 0 - 4 / 0	220

Ordering Information - Insulated Receptacles - Double Set Screw:



E1018-1700

E1018-1725

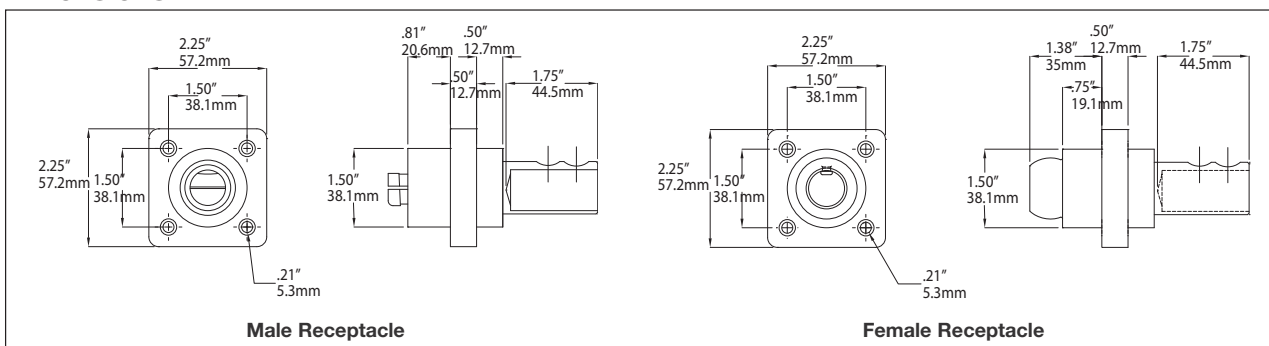
Color	Male Complete Cat. #	Female Complete Cat. #
Black	E1018-1700	E1018-1725
Red	E1018-1702	E1018-1727
Green	E1018-1704	E1018-1729
White	E1018-1705	E1018-1730
Blue	E1018-1706	E1018-1731
Brown	E1018-1707	E1018-1732
Orange	E1018-1703	E1018-1728
Yellow	E1018-1701	E1018-1726

Ordering Information - Three-Fer Tapping Tee 45° M-F-F-F:

Color	Cat. #
Black	E1018-9510
Red	E1018-9512
Green	E1018-9514
White	E1018-9515
Blue	E1018-9516
Brown	E1018-9517
Orange	E1018-9513
Yellow	E1018-9511

To order single packaged products, add a "K" suffix to the complete catalog number.

Dimensions:



Cable Size #2 AWG - 4 / 0
600V AC/DC
Up to 400A Continuous

Standard Series E1018, Elastomeric, Threaded Stud

Features:

- Double cam principle provides a positive, vibration-proof connection
- Self-compensating for wear
- No moving contact surfaces, eliminating arcing or burning
- Superior electro-mechanical connections
- Locked contacts will withstand a pulling force of 1,000 lbs.
- 1/3 of a turn assures a high pressure contact approaching 600 lbs. per sq. in., providing minimum resistance
- Contacts carefully machined from a high conductivity brass to a smooth sliding fit and easy locking action
- Watertight elastomeric body molded from colorfast material, color-coded for easy phase identification
- Recessed contacts protected by insulating jacket that extends beyond contact ends for safety
- Receptacles are safety insulated for direct mounting to steel panels

Testing and Code Compliance:

- CSA certified to C22.2 No. 182.3-M1987, File No. LR13963

Material Characteristics:

- Insulator - TPE
- Environmental rating: NEMA 3R
- Temperature rating: -40°C to 105°C

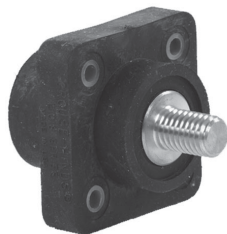
Ordering Information - Insulated Receptacles 1 1/8" (28.6mm) Threaded Stud:

Color	Male Complete Cat. #	Female Complete Cat. #
Black	E1018-1600S	E1018-1631S
Red	E1018-1602S	E1018-1633S
Green	E1018-1604S	E1018-1635S
White	E1018-1605S	E1018-1636S
Blue	E1018-1606S	E1018-1637S
Brown	E1018-1607S	E1018-1638S
Orange	E1018-1603S	E1018-1634S
Yellow	E1018-1601S	E1018-1632S

Stud size: 1/2"-13; maximum torque: 40 ft.-lbs.

Ordering Information - Insulated Receptacles 3/4" (19.1mm) Threaded Stud:

Color	Male Complete Cat. #	Female Complete Cat. #
Black	E1018-1600	E1018-1631
Red	E1018-1602	E1018-1633
Green	E1018-1604	E1018-1635
White	E1018-1605	E1018-1636
Blue	E1018-1606	E1018-1637
Brown	E1018-1607	E1018-1638
Orange	E1018-1603	E1018-1634
Yellow	E1018-1601	E1018-1632



E1018-1600



E1018-1631

Stud size: 1/2"-13; maximum torque: 40 ft.-lbs.

To order single packaged products, add a "K" suffix to the complete catalog number.

Dimensions:

