

Cord & cable connectors

CG series color-coded cord grips

Applications:

CG series color-coded grips with neoprene bushings are for use with portable cords, including S, SO, STO, ST, SJ, SJT, SJTO and SVO.

CG Cord Grips are installed to:

- Provide a means for passing a cord into an enclosure
- Form a watertight seal for cord
- Provide pull-out protection for cord, ensuring a secure connection

Features:

- Neoprene bushings are color-coded by cable diameter for quick and easy identification of proper cord grip
- Rugged construction protects cord from damage
- Compact design permits close spacing of fittings on panel applications
- Tightening one nut creates watertight seal
- Male tapered thread NPT
- Straight cord grips available in steel or aluminum; 45° and 90° cord grips available in malleable iron

Certifications and compliances:

- UL Standard 514B
- UL File No. E-23223
- CSA Standard C22.2 No. 18
- Suitable for NEMA 4 enclosures and other wet locations
- Suitable for use in Class I, Division 2 hazardous locations when installed in accordance with NEC 501.10(B)(2)



Standard materials:

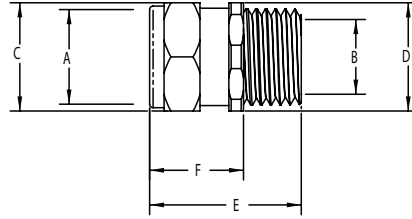
- Body – straight – 1/2" through 1 1/2": steel; 1/2" through 1": aluminum
45° – 1/2" through 1": malleable iron
90° – 1/2" through 1": malleable iron
- Nut – steel or aluminum
- Bushing – neoprene

Standard finishes:

- Body (steel or malleable Iron) – electrogalvanized
- Body (aluminum) – natural
- Nut (steel) – electrogalvanized
- Nut (aluminum) – natural

Cord & cable connectors

CG series color-coded cord grips



Straight connectors

Straight connector dimensions (in inches):

Cat. # Steel	Cat. # Aluminum	Size	Color	Cable range min.	Cable range max.	Unit qty.	Wt. lbs. per 100 [⊗]
CG50 250	CG50 250SA	1/2"	Red	0.15	0.25	25	10
CG50 350	CG50 350SA	1/2"	White	0.25	0.35	25	10
CG50 450	CG50 450SA	1/2"	Blue	0.35	0.45	25	10
CG50 560	CG50 560SA	1/2"	Green	0.45	0.56	25	10
CG50 650	CG50 650SA	1/2"	Brown	0.55	0.65	25	10
CG75 250	CG75 250SA	3/4"	Red	0.15	0.25	10	14
CG75 350	CG75 350SA	3/4"	White	0.25	0.35	10	14
CG75 450	CG75 450SA	3/4"	Blue	0.35	0.45	10	14
CG75 560	CG75 560SA	3/4"	Green	0.45	0.56	10	14
CG75 650	CG75 650SA	3/4"	Brown	0.55	0.65	10	14
CG75 750	CG75 750SA	3/4"	Yellow	0.65	0.75	10	14
CG75 850	CG75 850SA	3/4"	Purple	0.75	0.85	10	14
CG100 560	CG100 560SA	1"	Green	0.45	0.56	5	20
CG100 650	CG100 650SA	1"	Brown	0.55	0.65	5	20
CG100 750	CG100 750SA	1"	Yellow	0.65	0.75	5	20
CG100 850	CG100 850SA	1"	Purple	0.75	0.85	5	20
CG100 950	CG100 950SA	1"	Gray	0.85	0.95	5	20
CG100 1050	CG100 1050SA	1"	Black	0.95	1.05	5	20
CG125 850		1 1/4"	Purple	0.75	0.85	5	40
CG125 950		1 1/4"	Gray	0.85	0.95	5	40
CG125 1050		1 1/4"	Black	0.95	1.05	5	40
CG125 1150		1 1/4"	Orange	1.05	1.15	5	40
CG125 1250		1 1/4"	Red	1.15	1.25	5	40
CG125 1375		1 1/4"	White	1.25	1.375	5	40
CG150 1050		1 1/2"	Black	0.95	1.05	2	70
CG150 1150		1 1/2"	Orange	1.05	1.15	2	70
CG150 1250		1 1/2"	Red	1.15	1.25	2	70
CG150 1375		1 1/2"	White	1.25	1.375	2	70

Cable ranges		B	C	D	E	F
Min.	Max.	Max. cable	Cross corner	Hex body	Overall length	Exposed length
0.150	0.250	0.640	1.070	0.975	1 1/16	1 3/16
0.250	0.350	0.640	1.070	0.975	1 1/16	1 3/16
0.350	0.450	0.640	1.070	0.975	1 1/16	1 3/16
0.450	0.560	0.640	1.070	0.975	1 1/16	1 3/16
0.560	0.650	0.640	1.070	0.975	1 1/16	1 3/16
0.150	0.250	0.687	1.070	1.220	1 5/16	1 3/16
0.250	0.350	0.687	1.070	1.220	1 5/16	1 3/16
0.350	0.450	0.687	1.070	1.220	1 5/16	1 3/16
0.450	0.560	0.687	1.070	1.220	1 5/16	1 3/16
0.560	0.650	0.687	1.070	1.220	1 5/16	1 3/16
0.650	0.750	0.845	1.330	1.220	1 9/16	1 1/32
0.750	0.850	0.845	1.330	1.220	1 9/16	1 1/32
0.450	0.560	0.937	1.330	1.500	1 3/4	1 1/8
0.560	0.650	0.937	1.330	1.500	1 3/4	1 1/8
0.650	0.750	0.937	1.330	1.500	1 3/4	1 1/8
0.750	0.850	0.937	1.330	1.500	1 3/4	1 1/8
0.850	0.950	1.050	1.625	1.500	1 7/8	1 3/16
0.950	1.050	1.050	1.625	1.500	1 7/8	1 3/16
0.750	0.850	1.187	1.625	1.900	1 15/16	1 1/4
0.850	0.950	1.187	1.625	1.900	1 15/16	1 1/4
0.950	1.050	1.375	2.032	1.900	1 15/16	1 1/4
1.050	1.150	1.375	2.032	1.900	1 15/16	1 1/4
1.150	1.250	1.375	2.032	1.900	1 15/16	1 1/4
1.250	1.375	1.375	2.032	2.280	2	1 5/16
1.050	1.150	1.375	2.032	2.280	2	1 5/16
1.150	1.250	1.375	2.032	2.280	2	1 5/16
1.250	1.375	1.375	2.032	2.280	2	1 5/16

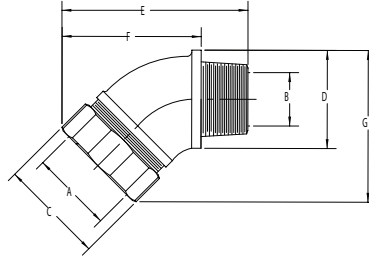
⊗ Wt. lbs. per 100 is for steel connectors only.

Cord & cable connectors

CG series color-coded cord grips

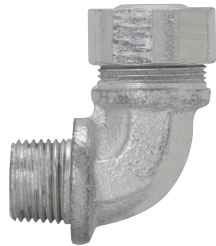


45° connectors

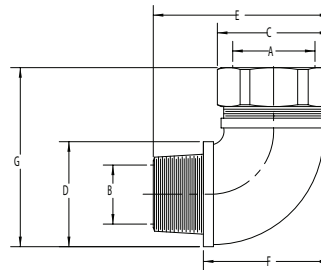


45° connector dimensions (in inches):

Cat. # Steel	Size	Color	Cable range min.	Cable range max.	Unit qty.	Wt. lbs. per 100	A		B	C	D	E	F	G
							Cable ranges		Max. cable	Cross corner	Hex body	Overall length	Exposed length	Width
							Min.	Max.						
CG5045 250	1/2"	Red	0.15	0.25	10	24	0.150	0.250	9/32	1 3/16	1 3/16	2 9/32	1 25/32	1 7/8
CG5045 350	1/2"	White	0.25	0.35	10	24	0.250	0.350	9/32	1 3/16	1 3/16	2 9/32	1 25/32	1 7/8
CG5045 450	1/2"	Blue	0.35	0.45	10	24	0.350	0.450	9/32	1 3/16	1 3/16	2 9/32	1 25/32	1 7/8
CG5045 560	1/2"	Green	0.45	0.56	10	24	0.450	0.560	9/32	1 3/16	1 3/16	2 9/32	1 25/32	1 7/8
CG5045 650	1/2"	Brown	0.55	0.65	10	24	0.560	0.650	9/32	1 3/16	1 3/16	2 9/32	1 25/32	1 7/8
CG7545 250	3/4"	Red	0.15	0.25	10	36	0.150	0.250	1 7/16	1 7/16	1 11/32	2 17/32	1 29/32	2
CG7545 350	3/4"	White	0.25	0.35	10	36	0.250	0.350	1 7/16	1 7/16	1 11/32	2 17/32	1 29/32	2
CG7545 450	3/4"	Blue	0.35	0.45	10	36	0.350	0.450	1 7/16	1 7/16	1 11/32	2 17/32	1 29/32	2
CG7545 560	3/4"	Green	0.45	0.56	10	36	0.450	0.560	1 7/16	1 7/16	1 11/32	2 17/32	1 29/32	2
CG7545 650	3/4"	Brown	0.55	0.65	10	36	0.560	0.650	1 7/16	1 7/16	1 11/32	2 17/32	1 29/32	2
CG7545 750	3/4"	Yellow	0.65	0.75	10	36	0.650	0.750	1 7/16	1 7/16	1 11/32	2 17/32	1 29/32	2
CG7545 850	3/4"	Purple	0.75	0.85	10	36	0.750	0.850	1 7/16	1 7/16	1 11/32	2 17/32	1 29/32	2
CG10045 560	1"	Green	0.45	0.56	5	68	0.450	0.560	3 1/2	1 3/4	1 11/16	2 9/16	2 11/32	2 15/32
CG10045 650	1"	Brown	0.55	0.65	5	68	0.560	0.650	3 1/2	1 3/4	1 11/16	2 9/16	2 11/32	2 15/32
CG10045 750	1"	Yellow	0.65	0.75	5	68	0.650	0.750	3 1/2	1 3/4	1 11/16	2 9/16	2 11/32	2 15/32
CG10045 850	1"	Purple	0.75	0.85	5	68	0.750	0.850	3 1/2	1 3/4	1 11/16	2 9/16	2 11/32	2 15/32
CG10045 950	1"	Gray	0.85	0.95	5	68	0.850	0.950	3 1/2	1 3/4	1 11/16	2 9/16	2 11/32	2 15/32
CG10045 1050	1"	Black	0.95	1.05	5	68	0.950	1.050	3 1/2	1 3/4	1 11/16	2 9/16	2 11/32	2 15/32



90° connectors



90° connector dimensions (in inches):

Cat. # Steel	Size	Color	Cable range min.	Cable range max.	Unit qty.	Wt. lbs. per 100	A		B	C	D	E	F	G
							Cable ranges		Max. cable	Cross corner	Hex body	Overall length	Exposed length	Width
							Min.	Max.						
CG5090 250	1/2"	Red	0.15	0.25	10	26	0.150	0.250	9/32	1 3/16	1 3/16	1 3/16	1 3/16	2 1/4
CG5090 350	1/2"	White	0.25	0.35	10	26	0.250	0.350	9/32	1 3/16	1 3/16	1 3/16	1 3/16	2 1/4
CG5090 450	1/2"	Blue	0.35	0.45	10	26	0.350	0.450	9/32	1 3/16	1 3/16	1 3/16	1 3/16	2 1/4
CG5090 560	1/2"	Green	0.45	0.56	10	26	0.450	0.560	9/32	1 3/16	1 3/16	1 3/16	1 3/16	2 1/4
CG5090 650	1/2"	Brown	0.55	0.65	10	26	0.560	0.650	9/32	1 3/16	1 3/16	1 3/16	1 3/16	2 1/4
CG7590 250	3/4"	Red	0.15	0.25	10	48	0.150	0.250	1 7/16	1 7/16	1 11/32	2 1/16	2 1/16	2 1/32
CG7590 350	3/4"	White	0.25	0.35	10	48	0.250	0.350	1 7/16	1 7/16	1 11/32	2 1/16	2 1/16	2 1/32
CG7590 450	3/4"	Blue	0.35	0.45	10	48	0.350	0.450	1 7/16	1 7/16	1 11/32	2 1/16	2 1/16	2 1/32
CG7590 560	3/4"	Green	0.45	0.56	10	48	0.450	0.560	1 7/16	1 7/16	1 11/32	2 1/16	2 1/16	2 1/32
CG7590 650	3/4"	Brown	0.55	0.65	10	48	0.560	0.650	1 7/16	1 7/16	1 11/32	2 1/16	2 1/16	2 1/32
CG7590 750	3/4"	Yellow	0.65	0.75	10	48	0.650	0.750	1 7/16	1 7/16	1 11/32	2 1/16	2 1/16	2 1/32
CG7590 850	3/4"	Purple	0.75	0.85	10	48	0.750	0.850	1 7/16	1 7/16	1 11/32	2 1/16	2 1/16	2 1/32
CG10090 560	1"	Green	0.45	0.56	5	68	0.450	0.560	3 1/2	1 3/4	1 11/16	2 3/4	2 1/32	2 29/32
CG10090 650	1"	Brown	0.55	0.65	5	68	0.560	0.650	3 1/2	1 3/4	1 11/16	2 3/4	2 1/32	2 29/32
CG10090 750	1"	Yellow	0.65	0.75	5	68	0.650	0.750	3 1/2	1 3/4	1 11/16	2 3/4	2 1/32	2 29/32
CG10090 850	1"	Purple	0.75	0.85	5	68	0.750	0.850	3 1/2	1 3/4	1 11/16	2 3/4	2 1/32	2 29/32
CG10090 950	1"	Gray	0.85	0.95	5	68	0.850	0.950	3 1/2	1 3/4	1 11/16	2 3/4	2 1/32	3
CG10090 1050	1"	Black	0.95	1.05	5	68	0.950	1.050	3 1/2	1 3/4	1 11/16	2 3/4	2 1/32	3

Cord & cable