

S

COMPACT REMOTE

Project: _____
 Type: _____
 Catalogue #: _____
 Drawn by: _____
 Date: _____

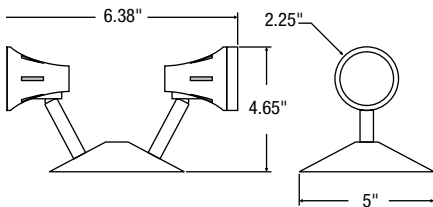
FEATURES AND SPECIFICATIONS

- **Mechanical**
 - Die cast, solid metal housing with die cast, twist lock lamp collar
 - Complete adjustability - both tilt and swivel
 - 5" diameter canopy standard
 - Two canopy mounting holes designed to match standard electrical junction boxes
 - White paint finish is standard, black colour is optional
 - MR16 lamp designed with low glare reflector and available in 6VDC, 12VDC or 24VDC
- **Compliances**
 - Meets requirements of ICES-005

Approvals:
 CSA Certified to C22.2 #141.15
 Suitable for damp & wet locations

Compliance:
 Meets requirements of ICES-005

DIMENSIONS



ORDERING GUIDE – LED

Series	Number of heads	Voltage	Wattage	Lamp type	Colour	Options ¹	
S	1 - Single head 2 - Double head 3 - Triple head 4 - Quad head (require 12" dia. canopy)	06 - 24 - 6VDC to 24VDC operational	4W - 4 watts	LR - LED	WH - White (standard)	LCP, TP, WG, PG	
			5W - 5 watts	LA - LED	BK - Black		
		12 - 24 - 12VDC to 24VDC operational	6W - 6 watts	LA - LED			
			7W - 7 watts				

ORDERING GUIDE – INCANDESCENT

Series	Number of heads	Voltage	Lamp	Colour	Options ¹
S	1 - Single head 2 - Double head 3 - Triple head 4 - Quad head (require 12" dia. canopy)	06V - 6VDC 12V - 12VDC 24V - 24VDC	See lamp selection chart	WH - White (standard) BK - Black	LCP, TP, WG, PG

QUICK SHIP: Not all products are Quick Ship. To view our Quick Ship qualified products, please consult our Quick Ship Product Guide at stanpro.com/quick-ship-product-guide. Product availability is subject to change without notice. Please contact your Stanpro customer service representative to confirm inventory levels at time of order.

† EMERGENCY LIGHTING OPTIONS

Option	Description
LCP	Less Canopy
TP	Tamper Proof Screws
WG	Wireguard
PG	Polycarb Guard

INCANDESCENT LAMP SELECTION

	6 Volts	12 Volts	24 Volts
MR16 - Small head			
Quartz halogen	10Q	12Q, 20Q, 35Q	12Q, 20Q, 50Q

OVERVIEW

Light source	LED
Input Voltage (DC)	6VDC, 12VDC & 24VDC