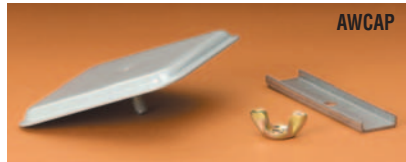


Accessories

Accessories

AW Hubs

Part/UPC Number	Catalog Number	Description
78205139040	AW100	1" Conduit
78205139050	AW125	1 1/4" Conduit
78205139060	AW150	1 1/2" Conduit
78205139070	AW200	2" Conduit
78205139080	AW250	2 1/2" Conduit
78205134721	AWCAP	AW Cap - Gray



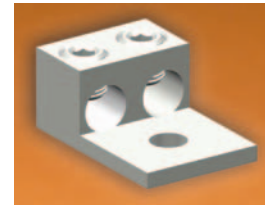
H-Base Hubs

Part/UPC Number	Catalog Number	Description
78205141100	H7	Hub Adapter AW To H-Base
78205141110	H10	H-Base Cap - Gray
78205141130	H30	3" Conduit
78205141132	H35	3 1/2" Conduit
78205141134	H40	4" Conduit



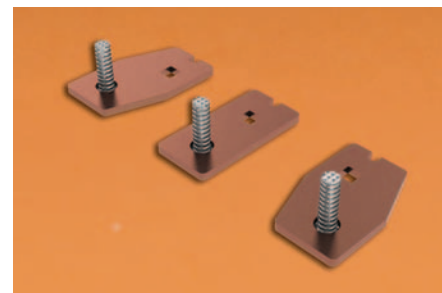
Lug Kits

Part/UPC Number	Catalog Number	Description
78205163260	101	1/0 Single Lug Kit, 1 Per Set
78205163261	103	1/0 Triple Lug Kit, 1 Per Set
78205163262	201	2/0 Single Lug Kit, 1 Per Set
78205163263	202	2/0 Dual Lug Kit, 1 Per Set
78205139641	212	250 KCMIL Dual Lug Kit, 1Ø, 3 Per Set
78205139642	311	350 KCMIL Single Lug Kit, 1Ø, 3 Per Set
78205139643	312	350 KCMIL Double Lug Kit, 1Ø, 3 Per Set
78205139647	331	350 KCMIL Single Lug Kit, 3Ø, 4 Per Set
78205139648	332	350 KCMIL Double Lug Kit, 3Ø, 4 Per Set
78205139644	611	600 KCMIL Single Lug Kit, 1Ø, 3 Per Set
78205139645	612	600 KCMIL Double Lug Kit, 1Ø, 3 Per Set
78205139649	631	600 KCMIL Single Lug Kit, 3Ø, 4 Per Set
78205139650	632	600 KCMIL Double Lug Kit, 3Ø, 4 Per Set



Stud/Lug Landing Pad Kits

Part/UPC Number	Catalog Number	Description
78205144475	ES38	3/8" Stud, 3 Per Set
78205144476	ES12	1/2" Stud, 3 Per Set



Cap Set Screw Assemblies

Part/UPC Number	Catalog Number	Description
78205126400	EB125	For 125A, 2/0 Lay-In Lugs
78205126401	EB200	For 200A, 350 kcmil Lay-In Lugs

12 pieces per set



EB200

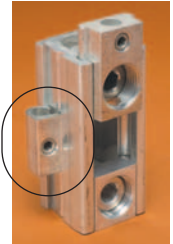
Supplemental Ground Lug

Part/UPC Number	Catalog Number	Description
78205141670	TGK102	Supplemental Ground Lug

12 pieces per bag



TGK102



Cap Set Screw Assemblies with Grounding Electrode Connector

Part/UPC Number	Catalog Number	Description
78205144647	ETB125	For 125A, 2/0 Lay-In Lugs
78205144649	ETB200	For 200A, 350 kcmil Lay-In Lugs

12 pieces per set



ETB200

5th Jaw Terminal Kits

Part/UPC Number	Catalog Number	Description
78205139465	50365	For Non-Lever Bypass 1Ø/3W Applications
78205139429	50366	For Lever Bypass 1Ø/3W Applications

1 per kit



50365



50366

Horned Bypass Cap Assemblies

Part/UPC Number	Catalog Number	Description
78205132343	EHB125	For 150A max / 125A cont., 2/0 Lay-In Lugs
78205132352	EHB200	For 250A max / 200A cont., 350 kcmil Lay-In Lugs

12 pieces per set



EHB200

7th Jaw Terminal Kit

Part/UPC Number	Catalog Number	Description
78205144474	50368	For Lever Bypass 3Ø/4W Applications

1 kit per bag



50368

Accessories

Accessories

Jumper Link

Part/UPC Number	Catalog Number	Description
78205152102	SJ-100	100A & 200A Jumper Link

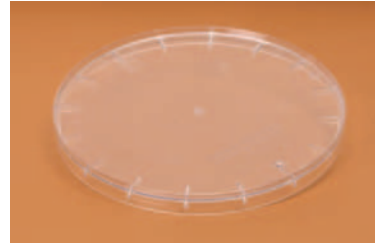
1 piece per bag



SJ-100

Closing Plate

Part/UPC Number	Catalog Number	Description
78205139430	25162	Clear Plastic Closing Plate

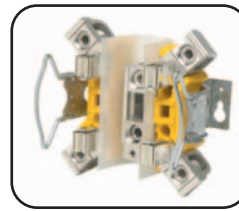


25162

Touch-Up Paint

Part/UPC Number	Catalog Number	Description
78205183012	84034	ANSI 61 Gray Touch-up Paint





Replacement Sockets	For Lever Bypass Units
EC12C4N	HEC10432CGR1N HEC10433CGR1N HEC10434CGR1N HEC10435CGR1N HEC10436CGR1N HEN12433CGRSTOL HEN12434CGRSTOL HEN12435CGRSTOL
EC12L4	EC12L41GR1N EC12L43GR2N
EC12L7	EC12L71GR1N
EC12D4N	ECCB10L24A3GR1N
EC12D7	ECCB10L27A3GR1N ECCB10L27A3GRST
EL20C4N	HEL20432CGR1N HEL20433CGR1N HEL20434CGR1N HEL20435CGR1N HEL20436CGR1N VEN21432CGRSTOL
EL20C7	HEL20732CGR1N HEL20733CGR1N HEL20734CGR1N HEL20735CGR1N HEL20736CGR1N
EL20L4	EL20L41GR1N EL20L41GR2N EL20L43GR2N EL20L43GRST EL20L45GR1N EL20L51GR2N EL20L51GRST EL20L53GRST
EL20L7	EL20L71GR1N EL20L71GR2N EL20L71GRST EL20L73GR2N EL20L73GRST EL20L75GR1N
EL20T4N	VELMP20432LGRST5K9 VELMP20433LGRST5K9 VELMP20434LGRST5K9 VELMP20435LGRST5K9 VELMP20436LGRST5K9
EL20U4N	EL20L44GRST
EL32T4N	EL32T44GRST EL32T46GRST ELCB32C24A4GRST ELCB32C24A5GR1N
EL32T4	EL32T45GR1N
EL32T7	EL32T75GR1N EL32T76GRST
EL20D4N	ELCB20L24A5GR1N EL6C20L24A6GRST
EL20D7	ELCB20L27A5GR1N

Replacement Sockets	For Non-Lever Bypass Units
EN12L4	EN12L41GRST EN12L42GRST EN12L43GRST EN12L41GRST MS76
EN20L4	EN20L41GRST EN20L42GRST EN20L43GRST
EN20BLA4	EN20L44GRST
EN12LBF4	ENCB10L24A3GRST EN4C10L24A3GRST ENLB10L24A3GRST
EN20LBG4	ENCB15L24A3GRST ENCB20C24A4GRST ENCB20L24A3GRST ENCB20L24A4GRST
EN12BLB4	HEN10412LGRST MS68 HEN10413LGRST MS68 HEN10414LGRST MS68 HEN10432LGRST HEN10433LGRST HEN10434LGRST HEN21432LGRST
EN12BLC4	HEN12433CGRSTOL HEN12434CGRSTOL HEN12435CGRSTOL
EN20BLC4	HEN20432CGRST
EN20BLB4	HEN21432LGRST
EN12BLE4	VEN10432CGRST VEN10433CGRST
EN12BLD4	VEN21432CGRSTOL
EN12BBJ4	VENMP12432LGRST VENMP12433LGRST VENMP12434CGRST VENMP12435CGRST VENMP12436CGRST
EN20BBH4	VENMP20434LGRST VENMP20435LGRST VENMP20436LGRST
EN20BBJ4	VENMP20432LGRST VENMP20433LGRST VENMP20434LGRST VENMP20435LGRST VENMP20436LGRST

Replacement Sockets	For Current Transformers Meter Sockets
1006CT	SW02062S1GR1N SW02062C2GR1T
1008CT	SW02082C2GR1T
10013CT	SW02132S1GR1N SW02132C2GR1T SP02133N2GRST

For applicable uses consult Cooper B-Line's Engineering Department