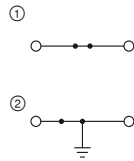


Feed-through, multi-conductor, and multi-level terminal blocks and ground terminals

Notes:
 1) For additional accessories and technical data, see page 40.
 For information on installation and using accessories for Ex applications, see page 602.



41 A, feed-through terminal block and ground terminal



Ex: EAC Ex CB
 KEMA 04ATEX2048 U / IECEx KEM 06.0027U

Technical data¹⁾

Width	Length	Height		
6.2	47.7	47.5 (NS 35/7,5)		
I _{max.} [A]	U _{max.} [V]	max. Ø [mm ²]	AWG (UL)	
41	1000	0.14 - 6	26-10	
32 (FBS) / 24 (FBSR)				
IEC	UL / CUL	CSA	Ex	
1000	600	600	690	
Nominal current / cross section	[A] / [mm ²]			
32 / 4	30 / -			

Ordering data

Type	Order No.	Pcs. / Pkt.
UT 4	① 3044102	50
UT 4 BU	① 3044115	50
UT 4-PE	② 3044128	50

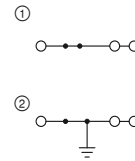
Accessories¹⁾

D-UT 2,5/10	Order No.	Pcs. / Pkt.
	3047028	50

Dimensions	[mm]
Width	6.2
Length	47.7
Height	47.5 (NS 35/7,5)
Max. electrical data	
I _{max.} [A]	41
U _{max.} [V]	1000
Max. bridge current	[A]
Rated data	
Rated voltage	[V]
Nominal current / cross section	[A] / [mm ²]
	32 / 4

Description	Color
Terminal block	gray blue
Ground terminal	green-yellow

Cover, width 2.2 mm	Color
	gray



41 A, feed-through terminal block and ground terminal, 3 connections



Ex: EAC Ex CB
 KEMA 06ATEX0017 U / IECEx KEM 06.0013U

Technical data¹⁾

Width	Length	Height		
6.2	57.8	47.5 (NS 35/7,5)		
I _{max.} [A]	U _{max.} [V]	max. Ø [mm ²]	AWG (UL)	
41	500	0.14 - 6	26-10	
32 (FBS) / 24 (FBSR)				
IEC	UL / CUL	CSA	Ex	
500	150	150	352	
Nominal current / cross section	[A] / [mm ²]			
32 / 4	30 / -			

Ordering data

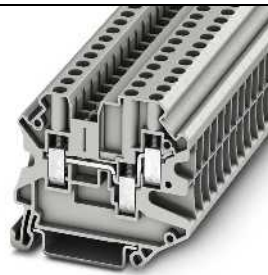
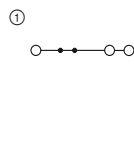
Type	Order No.	Pcs. / Pkt.
UT 4-TWIN	① 3044364	50
UT 4-TWIN BU	① 3044500	50
UT 4-TWIN-PE	② 3044380	50

Accessories¹⁾

D-UT 2,5/4-TWIN	Order No.	Pcs. / Pkt.
	3047141	50

Feed-through, multi-conductor, and multi-level terminal blocks and ground terminals

Notes:
 1) For additional accessories and technical data, see page 40.
 For information on installation and using accessories for Ex applications, see page 602.



39 A, 1000 V, feed-through terminal block, 3 connections



Ex: EAC Ex CB
 SEV13ATEX0133U / IECEx SEV13.0004U

Technical data¹⁾

Width	Length	Height		
6.2	57.8	50 (NS 35/7,5)		
I _{max.} [A]	U _{max.} [V]	max. Ø [mm ²]	AWG (UL)	
39	1000	0.14 - 6	26-10	
32 (FBS) / 24 (FBSR)				
IEC	UL / CUL	CSA	Ex	
1000	600	600	550	
Nominal current / cross section	[A] / [mm ²]			
32 / 4	30 / -			

Ordering data

Type	Order No.	Pcs. / Pkt.
UT 4-TWIN HV	① 3000608	50

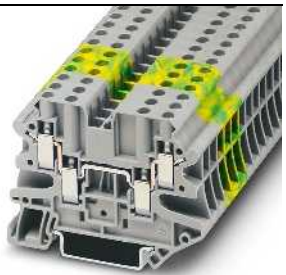
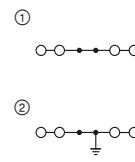
Accessories¹⁾

D-UT 4-TWIN HV	Order No.	Pcs. / Pkt.
	3000710	50

Dimensions	[mm]
Width	6.2
Length	57.8
Height	50 (NS 35/7,5)
Max. electrical data	
I _{max.} [A]	39
U _{max.} [V]	1000
Max. bridge current	[A]
Rated data	
Rated voltage	[V]
Nominal current / cross section	[A] / [mm ²]
	32 / 4

Description	Color
Terminal block	gray blue
Ground terminal	green-yellow

Cover, width 2.2 mm	Color
	gray



39 A, feed-through terminal block and ground terminal, 4 connections



Ex: EAC Ex CB
 KEMA 06ATEX0017 U / IECEx KEM 06.0013U

Technical data¹⁾

Width	Length	Height		
6.2	65.4	47.5 (NS 35/7,5)		
I _{max.} [A]	U _{max.} [V]	max. Ø [mm ²]	AWG (UL)	
39	500	0.14 - 6	26-10	
32 (FBS) / 24 (FBSR)				
IEC	UL / CUL	CSA	Ex	
500	150	150	352	
Nominal current / cross section	[A] / [mm ²]			
32 / 4	30 / -			

Ordering data

Type	Order No.	Pcs. / Pkt.
UT 4-QUATTRO	① 3044571	50
UT 4-QUATTRO BU	① 3044584	50
UT 4-QUATTRO-PE	② 3044597	50

Accessories¹⁾

D-UT 2,5/4-QUATTRO	Order No.	Pcs. / Pkt.
	3047170	50